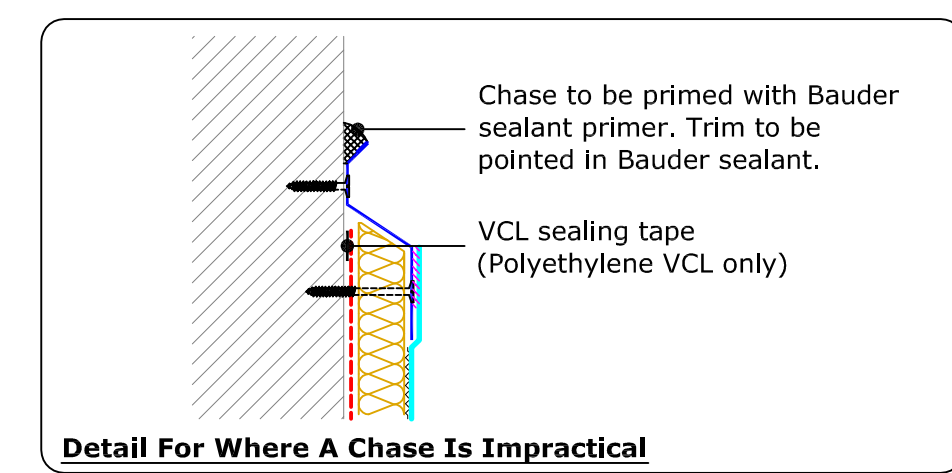
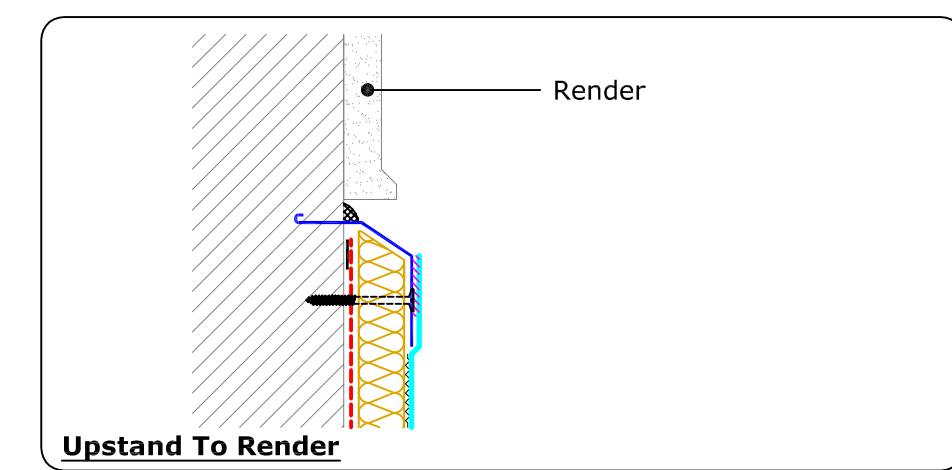
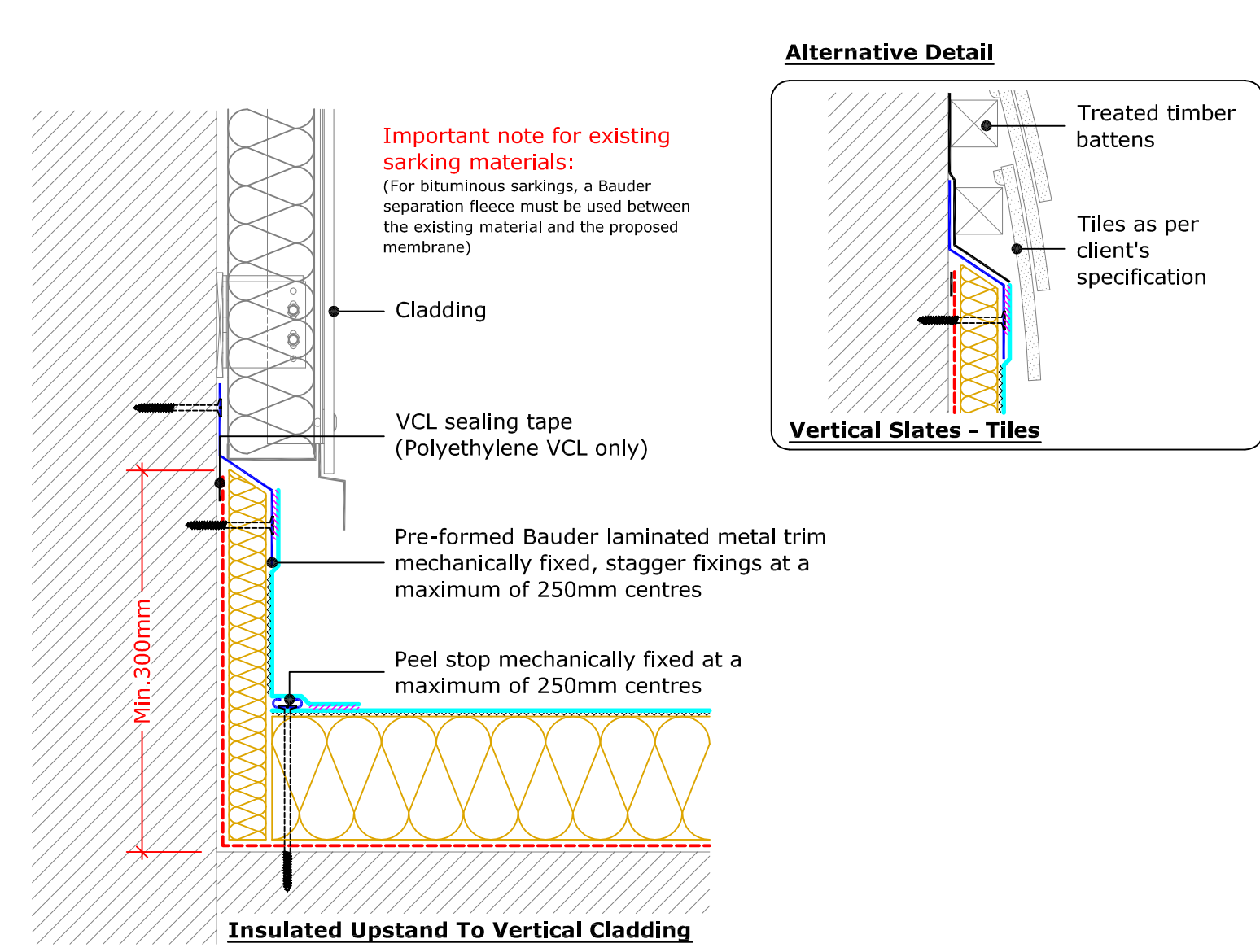


**Alternative Details**

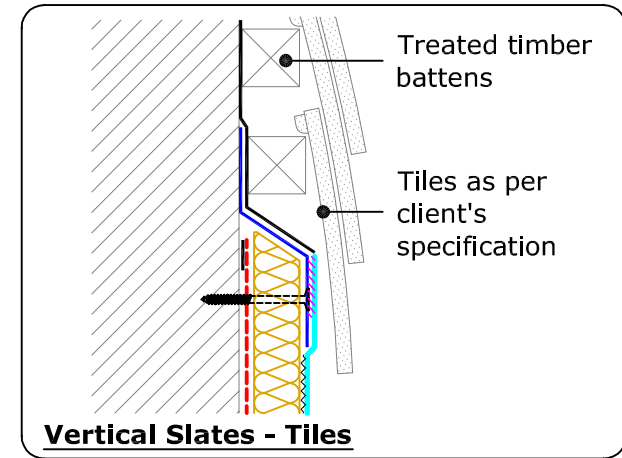


**Insulated Upstand**

(Drg.No: D0100-00W\_Ad\_201-001)

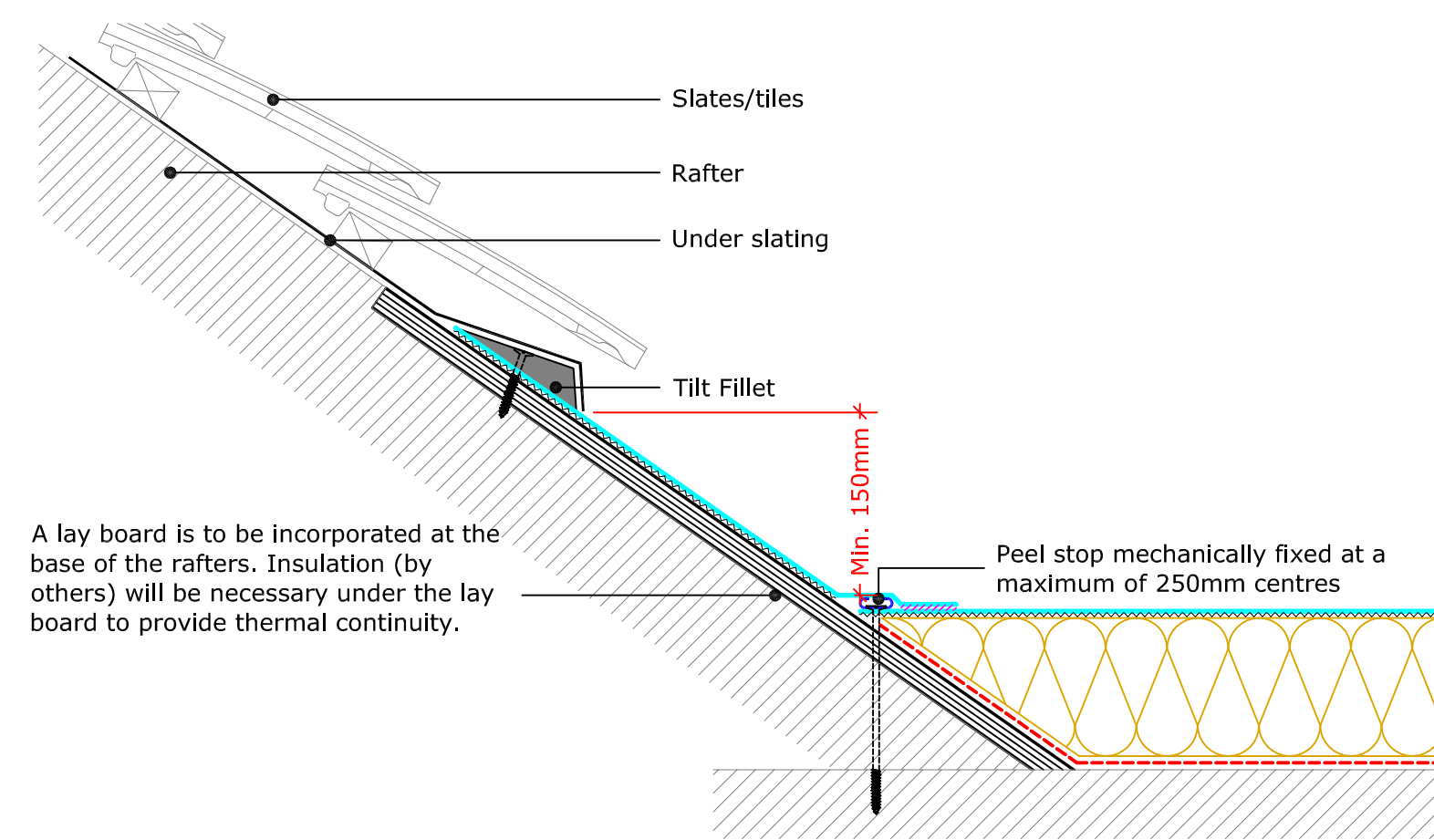


**Alternative Detail**



**Insulated Upstand to Vertical Cladding or Slates/Tiles**

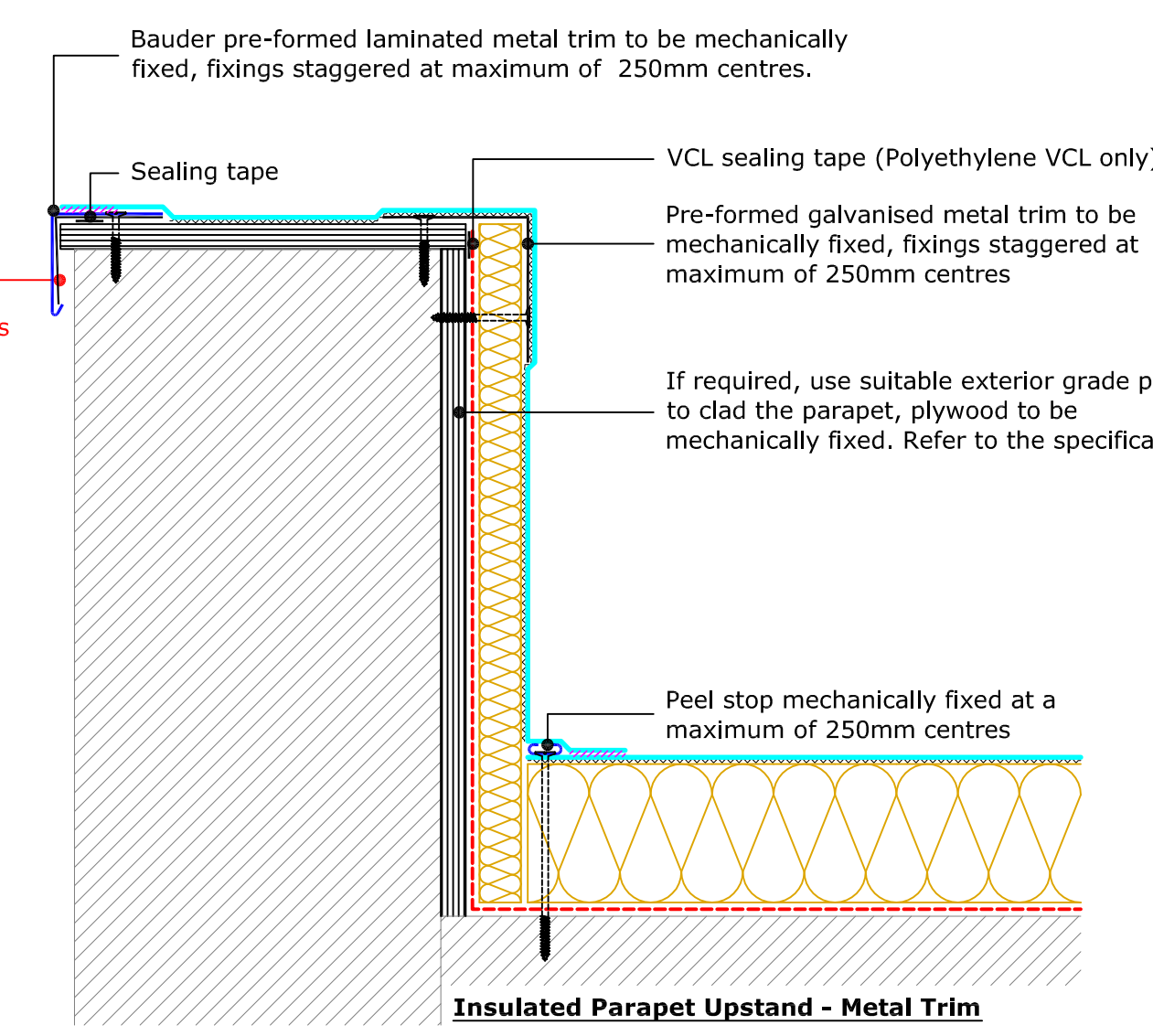
(Drg.No: D0100-00W\_Ad\_201-002)



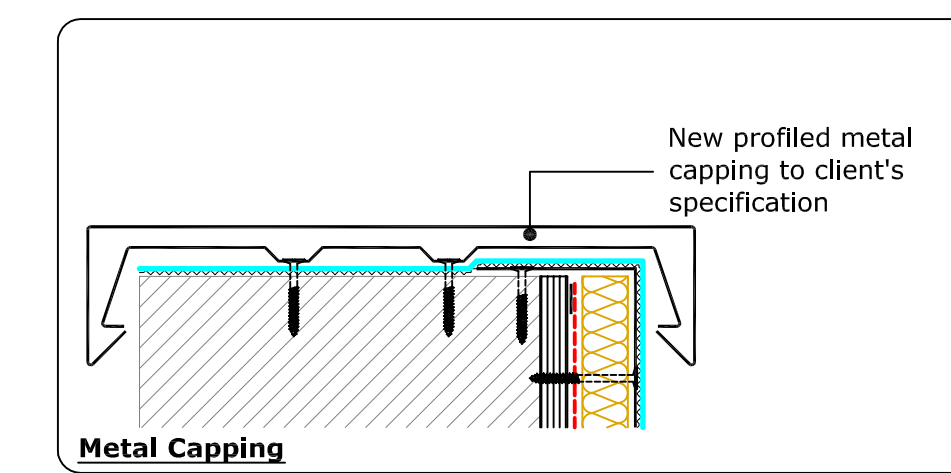
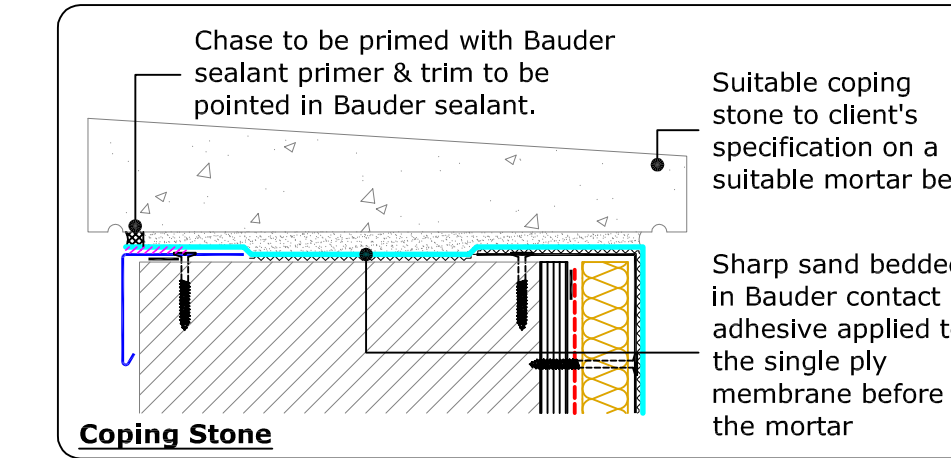
A lay board is to be incorporated at the base of the rafters. Insulation (by others) will be necessary under the lay board to provide thermal continuity.

**Upstand To Pitched Roof**

(Drg.No: D0100-00W\_Ad\_001-004)

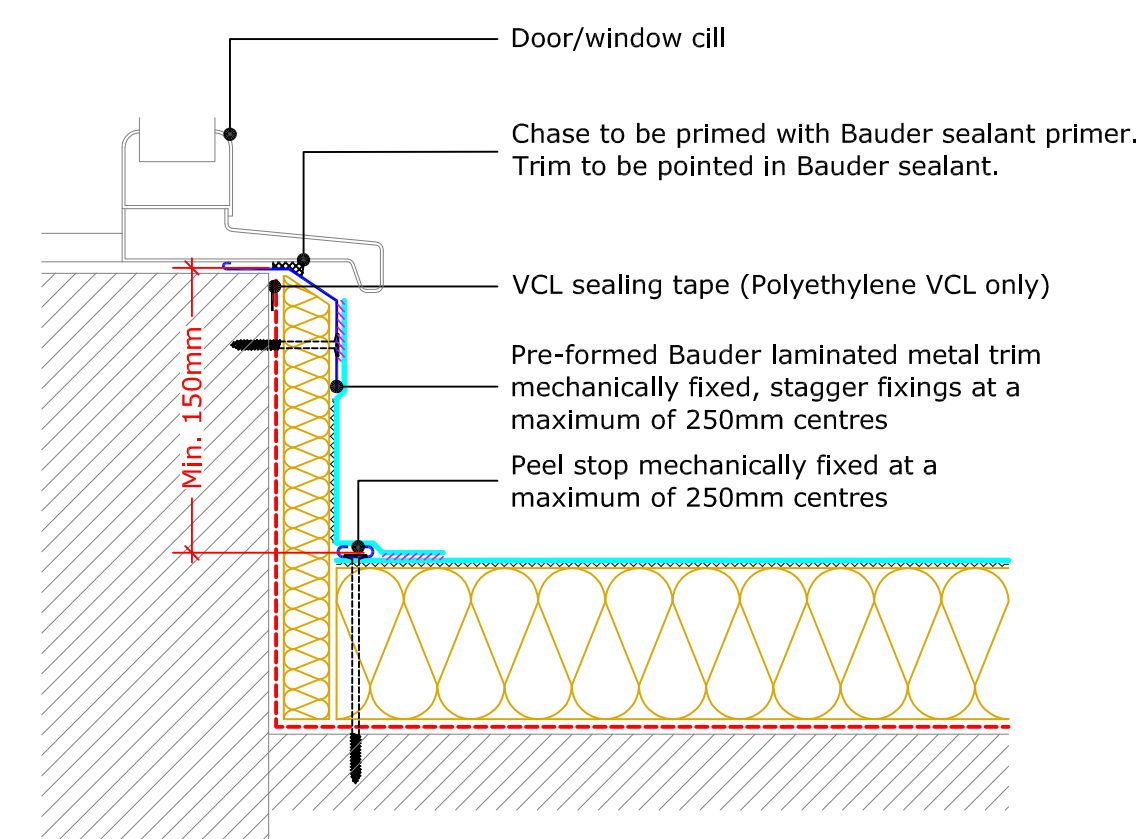


**Alternative Details**



**Insulated Parapet Upstand**

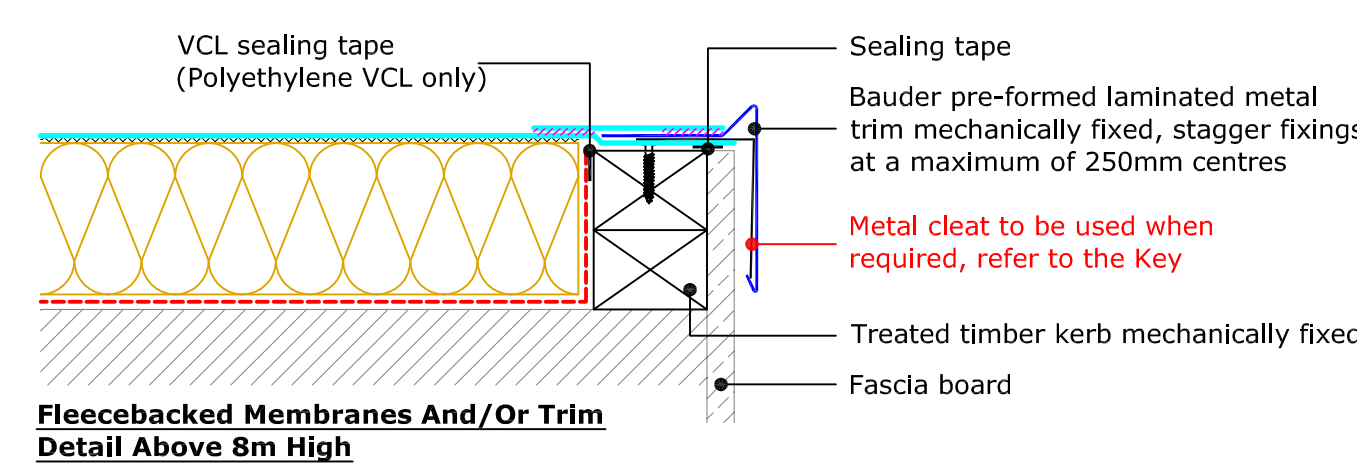
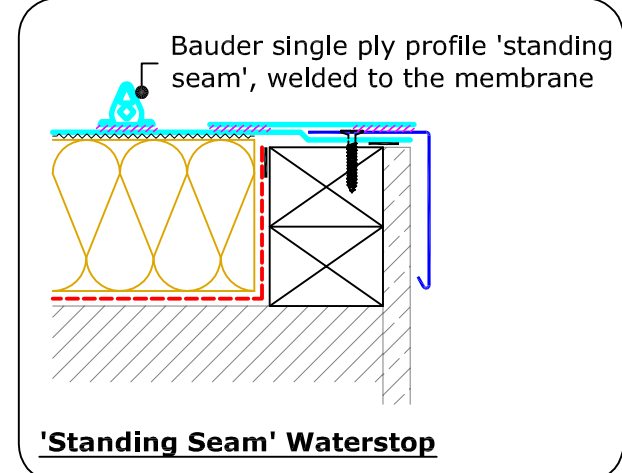
(Drg.No: D0100-00W\_Ad\_203-001)



**Insulated Upstand to Door/Window Cill**

(Drg.No: D0100-00W\_Ad\_201-003)

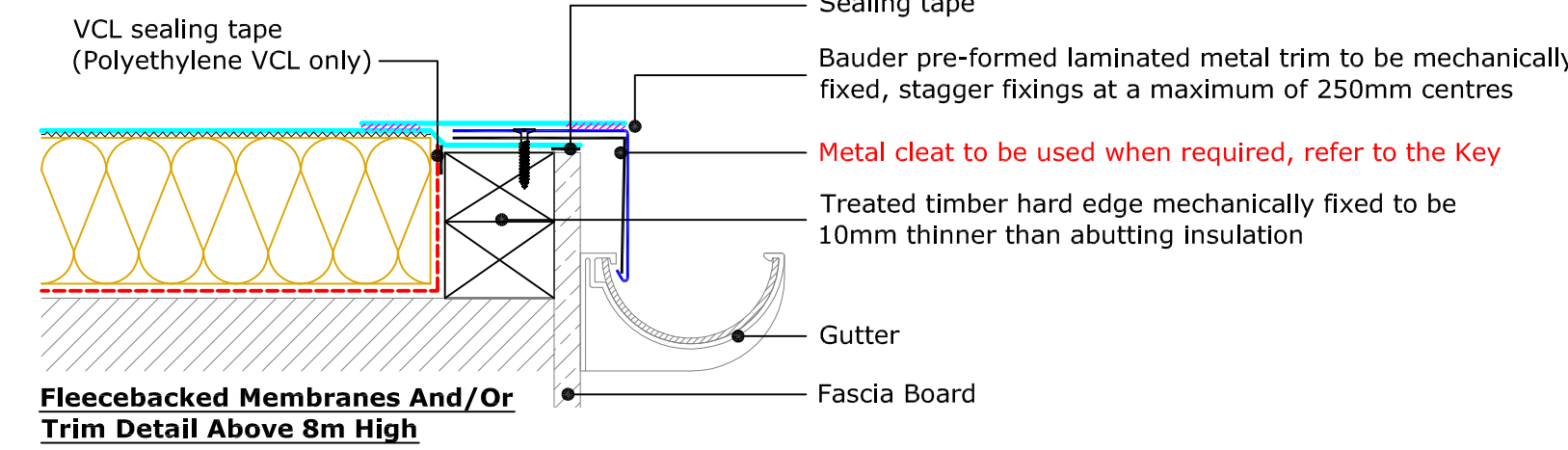
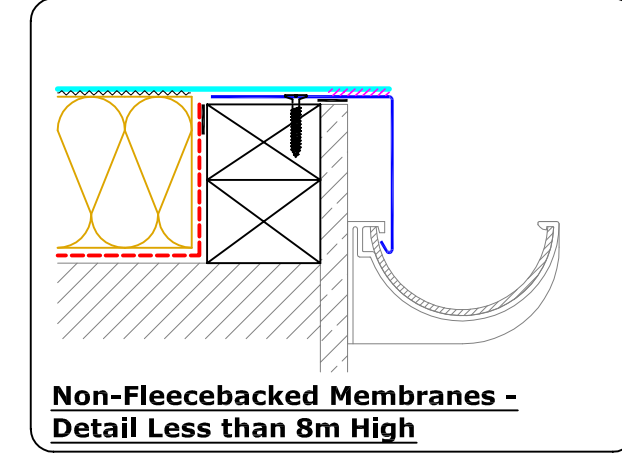
**Alternative Detail**



**Perimeter Kerb**

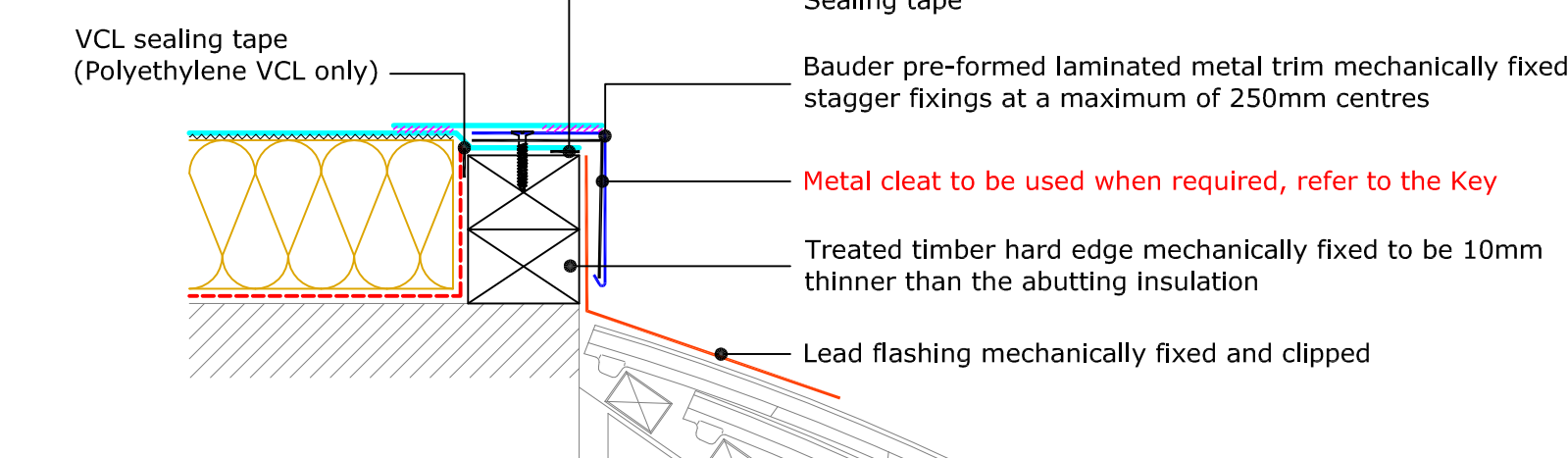
(Drg.No: D0100-00W\_Ad\_002-001)

**Alternative Detail**



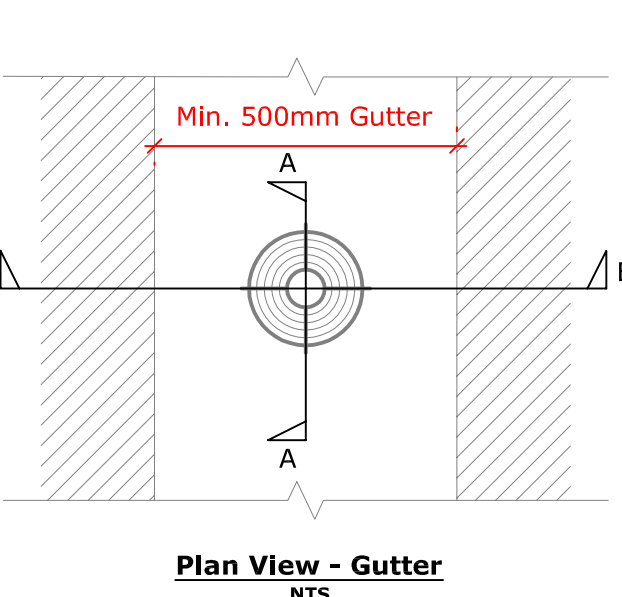
**External Gutter - Less than 8m High**

(Drg.No: D0100-00W\_Ad\_006-005)

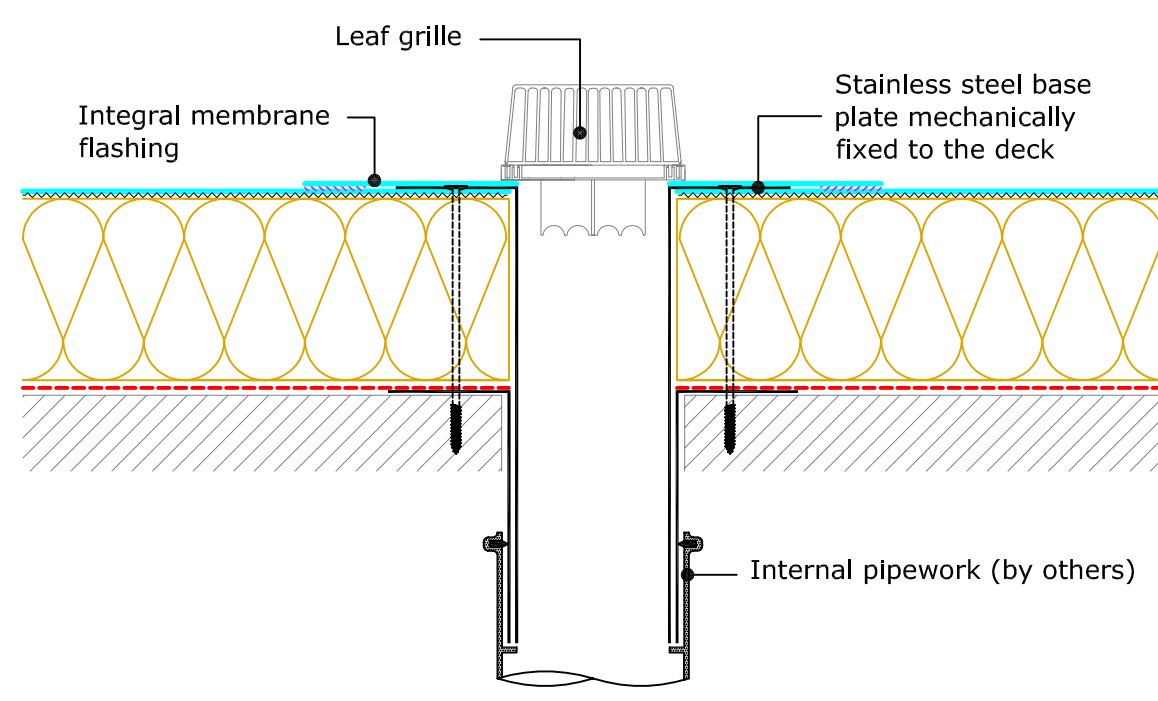
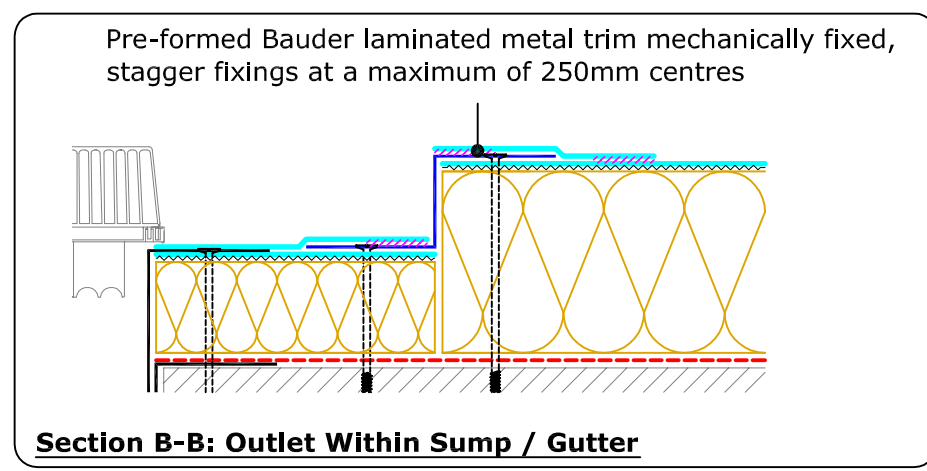


**Detail to Mansard Roof**

(Drg.No: D0100-00W\_Ad\_006-006)

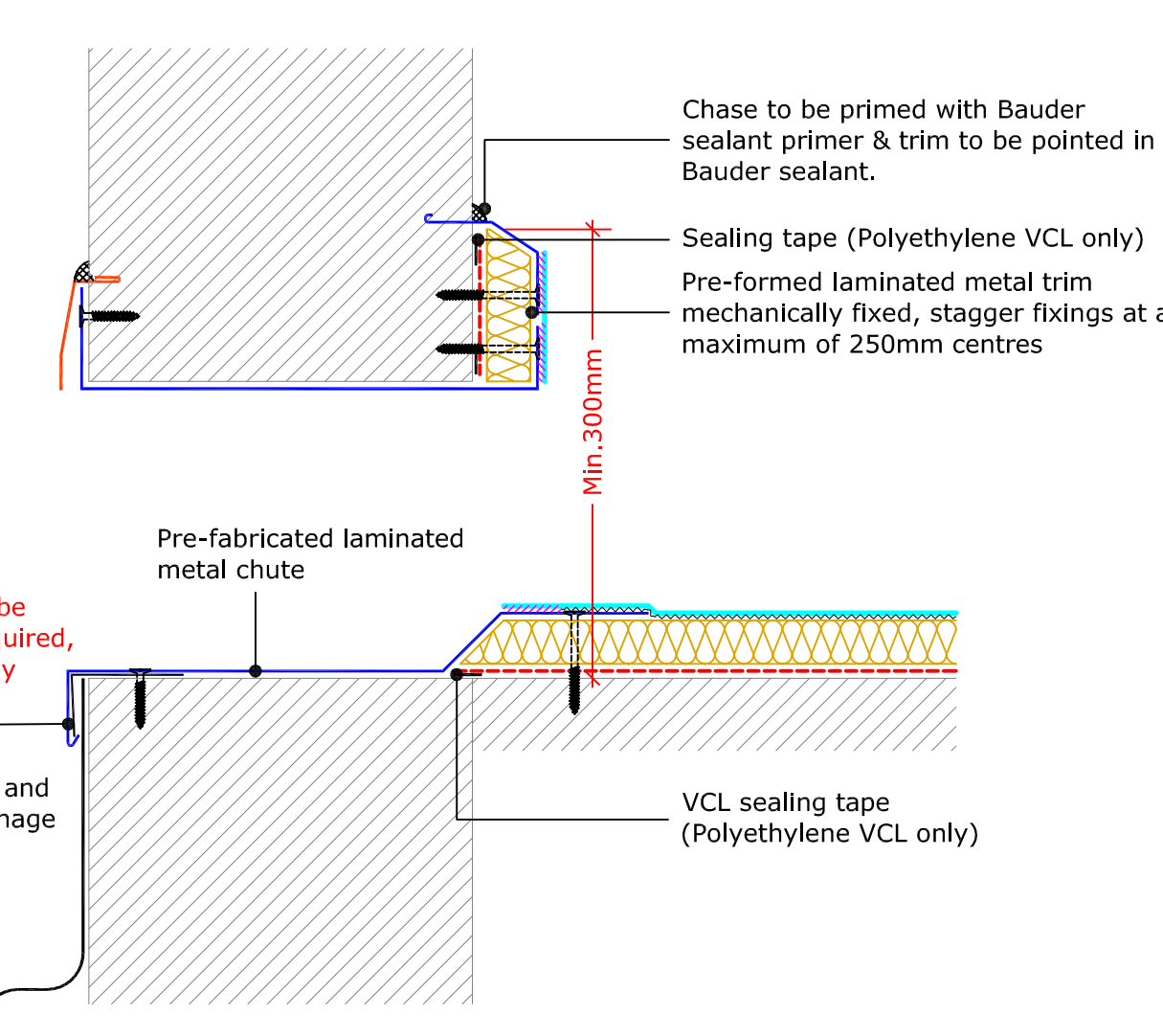


**Alternative Detail**



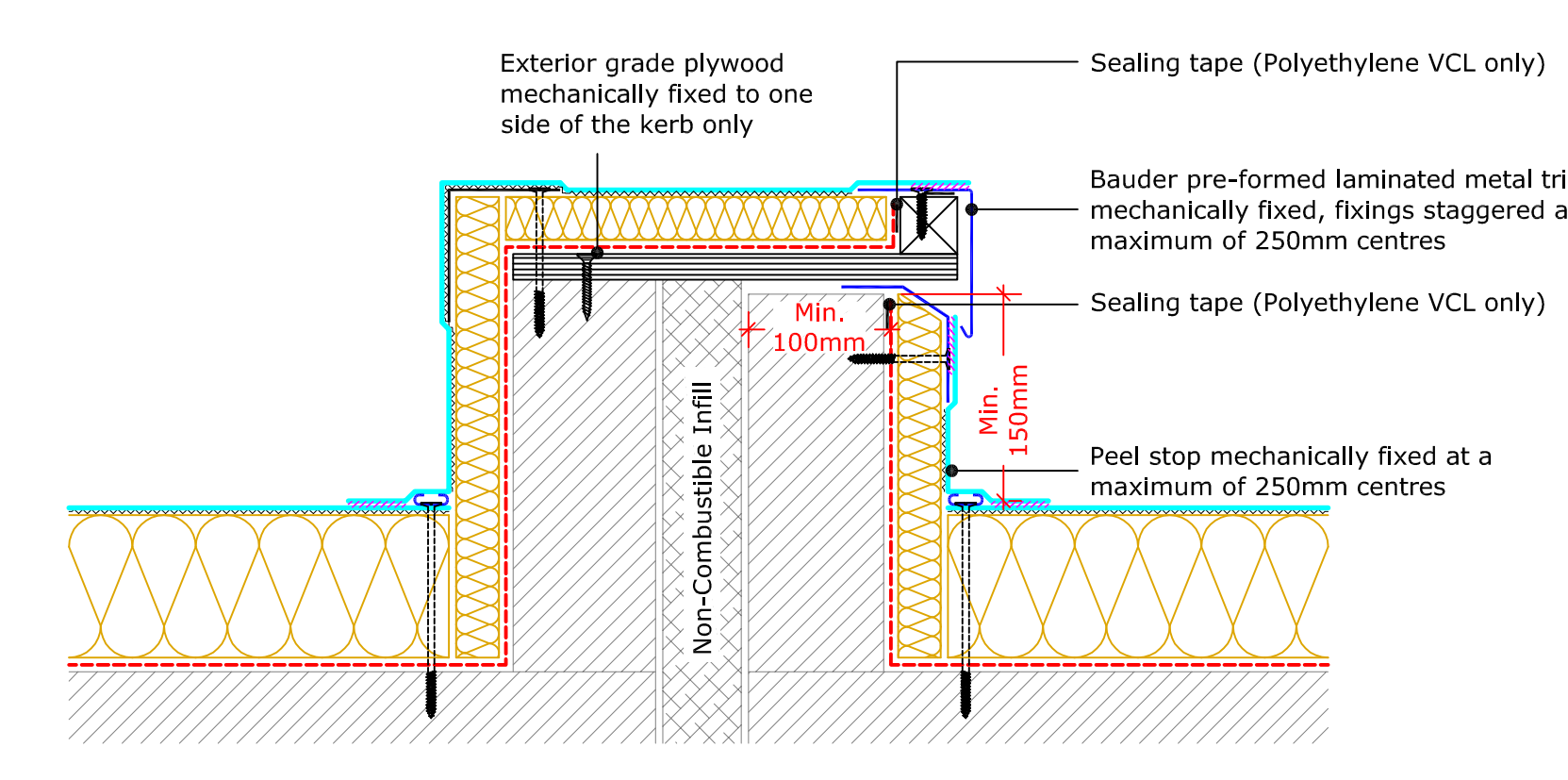
**Section A-A: Outlet Within Gutters Or Where No Sump Is Required Rainwater Outlet**

(Drg.No: D0100-00W\_Ad\_006-007)



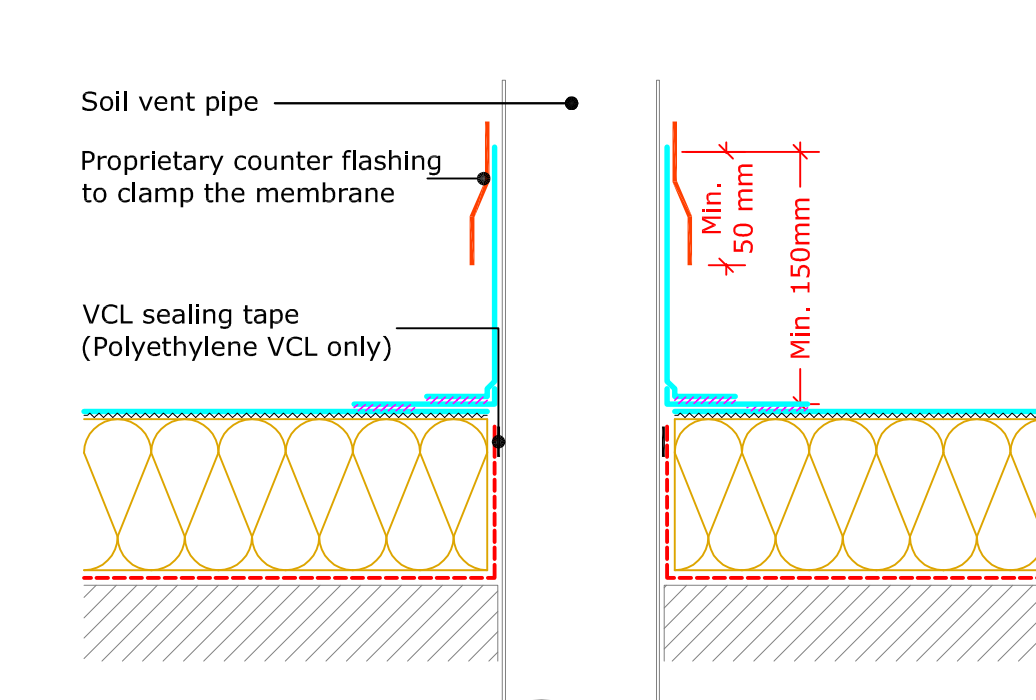
**Insulated Upstand - Laminated Metal Chute**

(Drg.No: D0100-00W\_Ad\_204-002)



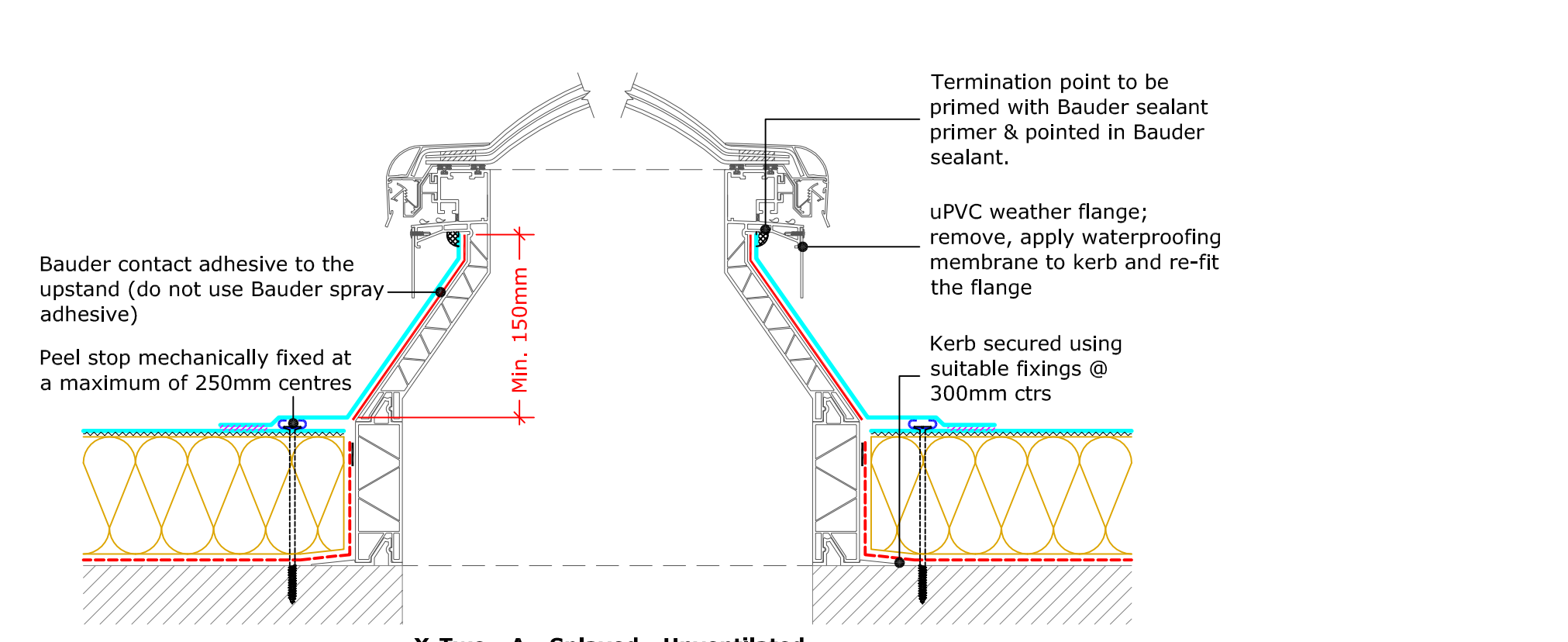
**Twin Kerb Expansion Joint**

(Drg.No: D0100-00W\_Ad\_204-001)



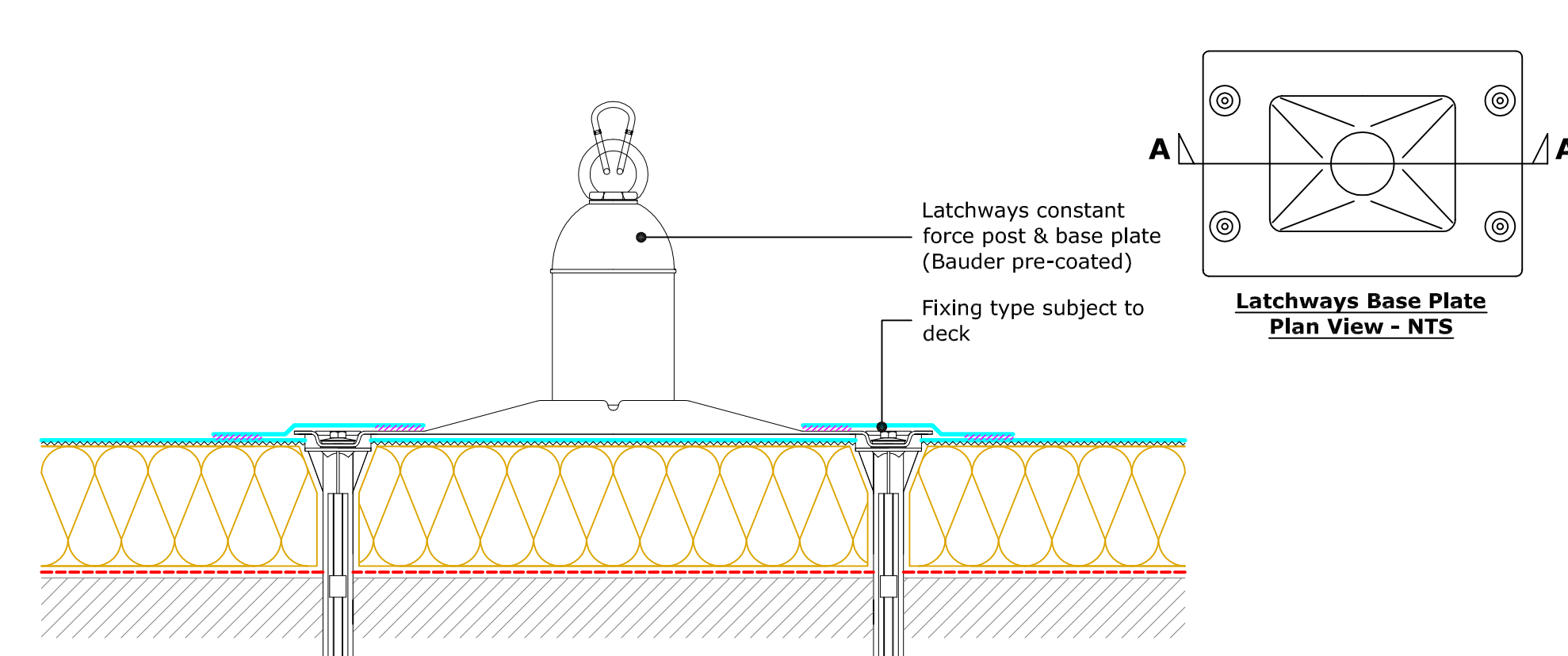
**Upstand - Soil Vent Pipe - Upto 150mmØ**

(Drg.No: D0100-00W\_Ad\_007-001)



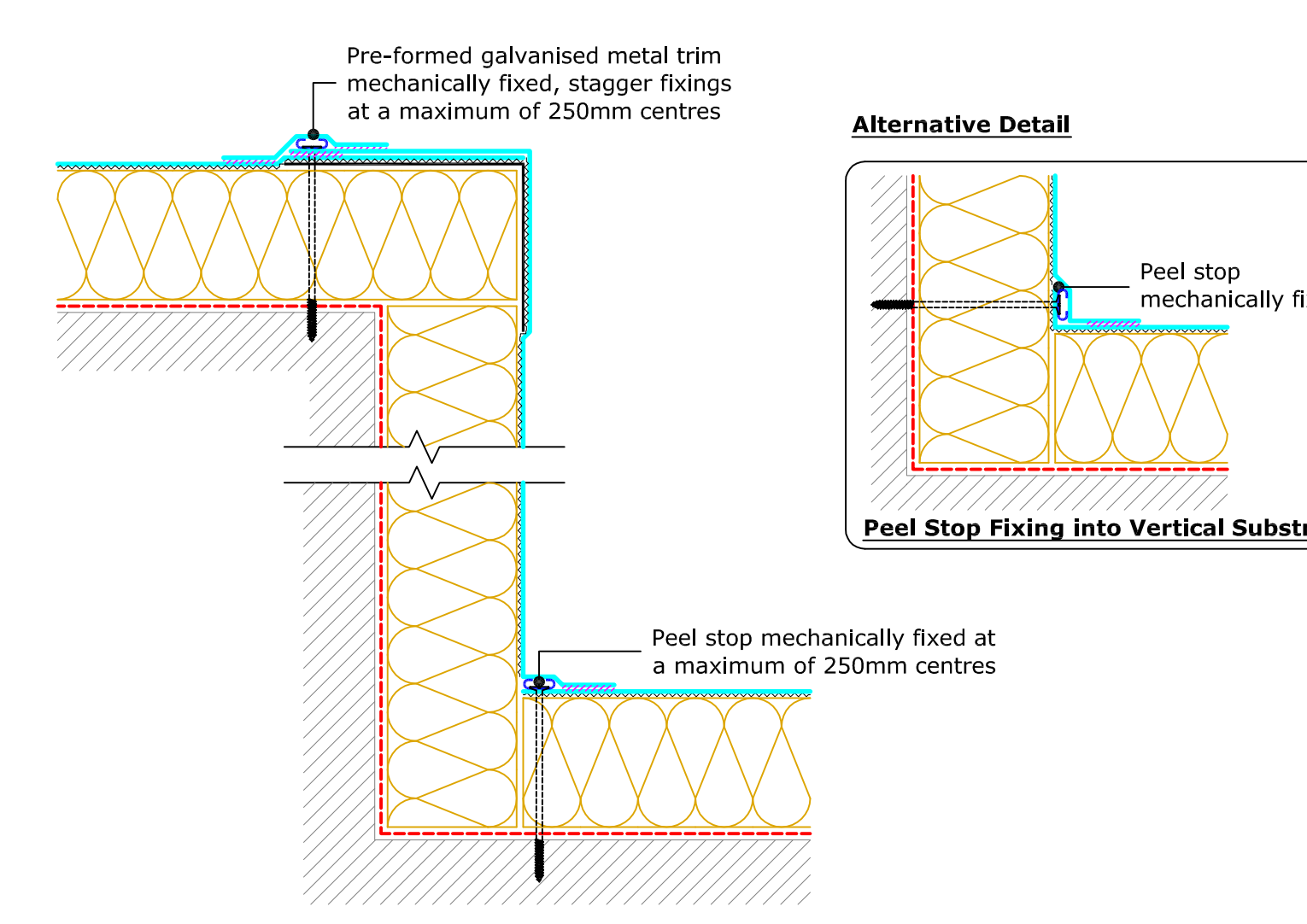
**X-Two - A - Splayed - Unventilated**

(Drawing Number: BA-X2-A-01-SF)

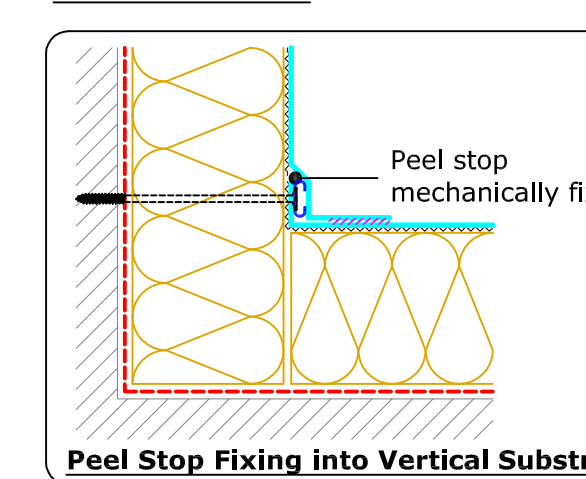


**Latchways Constant Force Post**

(Drg.No: D0100-00W\_Ad\_009-001)

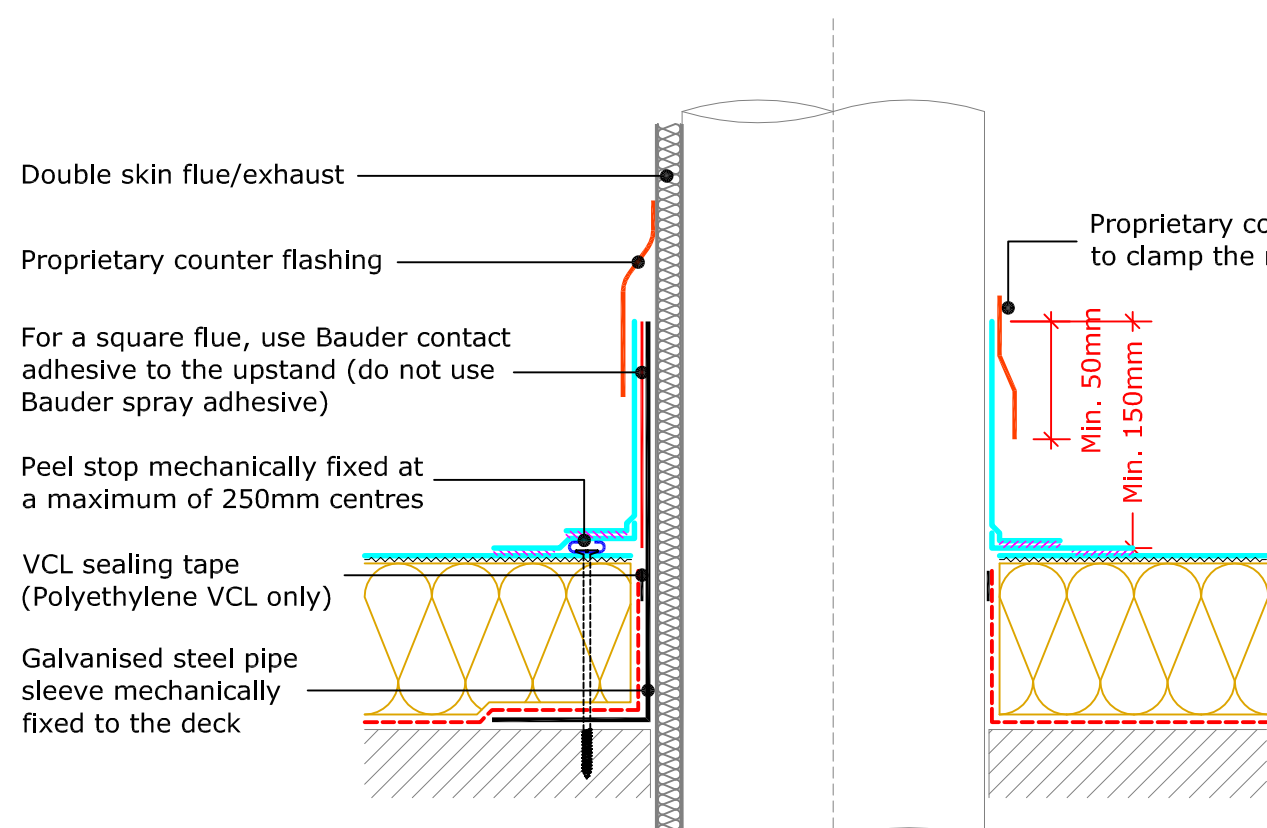


**Alternative Detail**



**Change In Level Up to 2m - Unless Sidelap Fixings Are Used**

(Drg.No: D0100-00W\_Ad\_210-001)



**Upstand to Hot Flue OR Cold Pipe**

(Drg.No: D0100-00W\_Ad\_007-002)

**Hot Flue / Exhaust**

**Cold Pipe**

This installation detail may not provide adequate air-tightness. Refer to the manufacturer's literature for the requirements of building regulations and BS 6229. The building designer should consider this aspect separately.

**Bauder Rooflight - Euroglaze**

(Drg.No: D0100-00W\_Ad\_008-001)

**Key**

- Bauder Single Ply Membrane
- Bauder Single Ply Adhesive
- Bauder Insulation
- Bauder Vapour Control Layer
- Deck / Substrate
- Bauder laminated metal trim / pre-formed metal (Refer to the specification for the correct option, where trims are used above 8m High OR the trim face depth is  $\geq 100mm$ , a metal cleat must be used in accordance with the specification)
- Pre-formed Galvanised Metal / Metal by Others
- Sealing Tape
- Peel Stop and Fixing to suit
- Single Ply Yield

- IMPORTANT NOTES:**
- This detail is suitable for the following Bauder Systems: Bauder Thermoflex and Thermoflex.
  - This Drawing Shows Alternative Options. For the Correct Solution to be used, Refer to the Project Specific Specification.
  - Do not scale to ascertain dimensions.
  - All dimensions to be checked and verified on site prior to commencement of work.
  - This drawing is to be read in conjunction with the specification and associated drawings.
  - This detail is a guideline only, representing typical detailing conditions and illustrate the correct application of the above Bauder System. It may be necessary to modify this detail to suit specific project design constraints and conditions.
  - Refer to the Bauder Specification for the product description and method of application. For clarity the method of attachment has not been shown.

Rev	Date	Description	Drawn By

**BAUDER**

**UK OFFICE**  
 Bauder Limited  
 70 Lansdown Road, Ipswich,  
 Suffolk, IP1 0DN, England,  
 UK  
 Tel: +44 (0)1473 257671  
 Fax: +44 (0)1473 230761  
 Email: technical@bauder.co.uk  
 bauder.co.uk

**IRELAND OFFICE**  
 Bauder Limited  
 O'Duffy Centre, Cross Lane,  
 Carrigrohane, Co. Wexford,  
 Ireland  
 Tel: +353 (0)42 9692 333  
 Fax: +353 (0)42 9692 870  
 Email: technical@bauder.ie  
 bauder.ie

**SINGLE PLY TYPICAL DETAILS Fully Adhered**

1:15  
 D0100-00W\_Ad\_200-001  
 15th Aug 2012