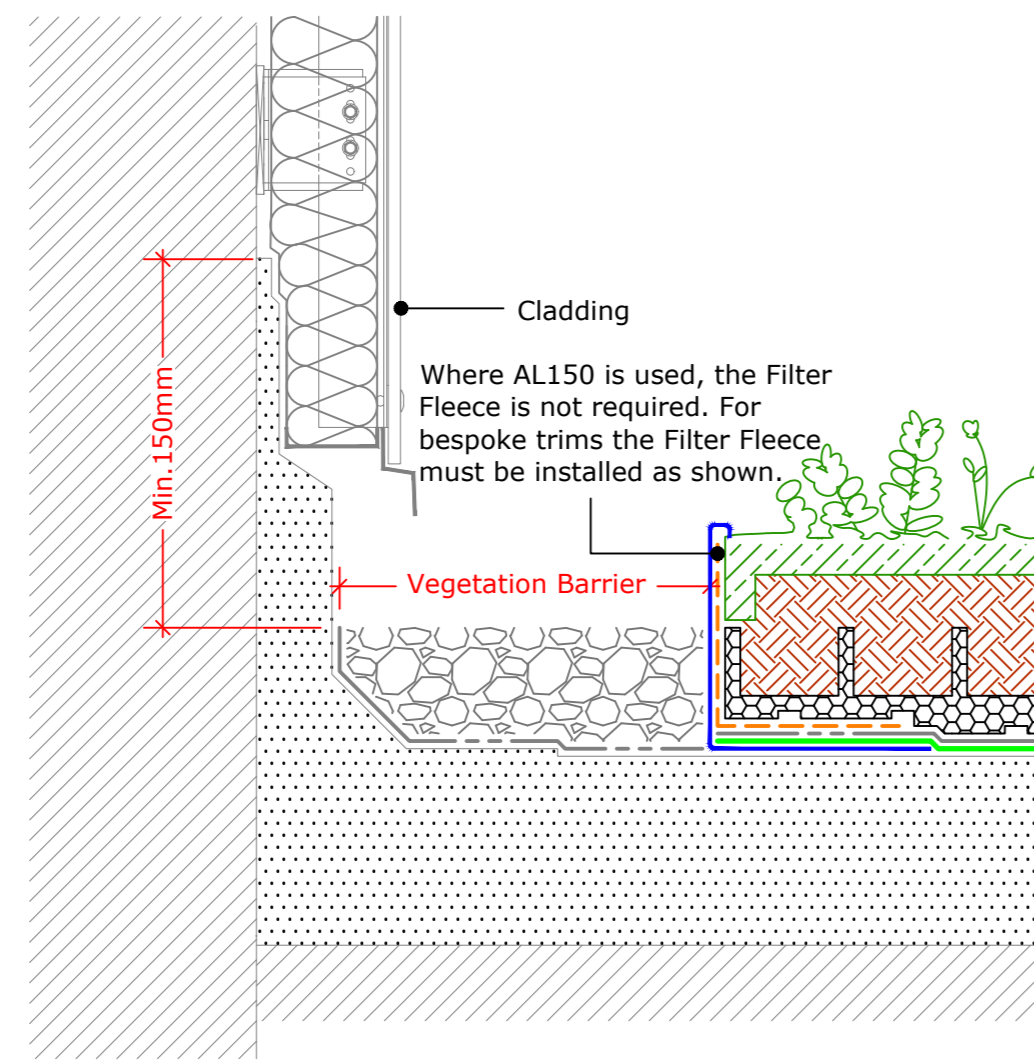
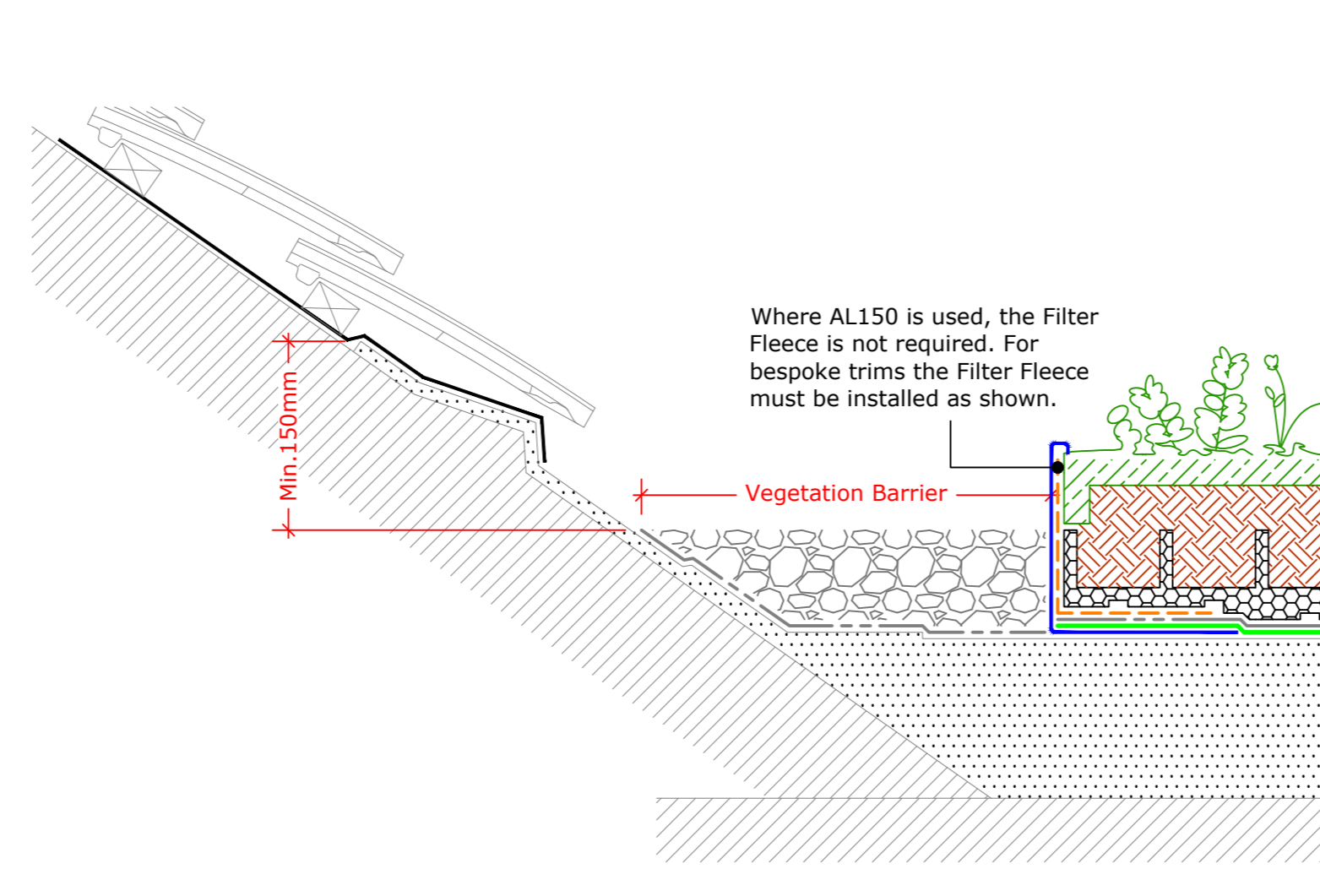


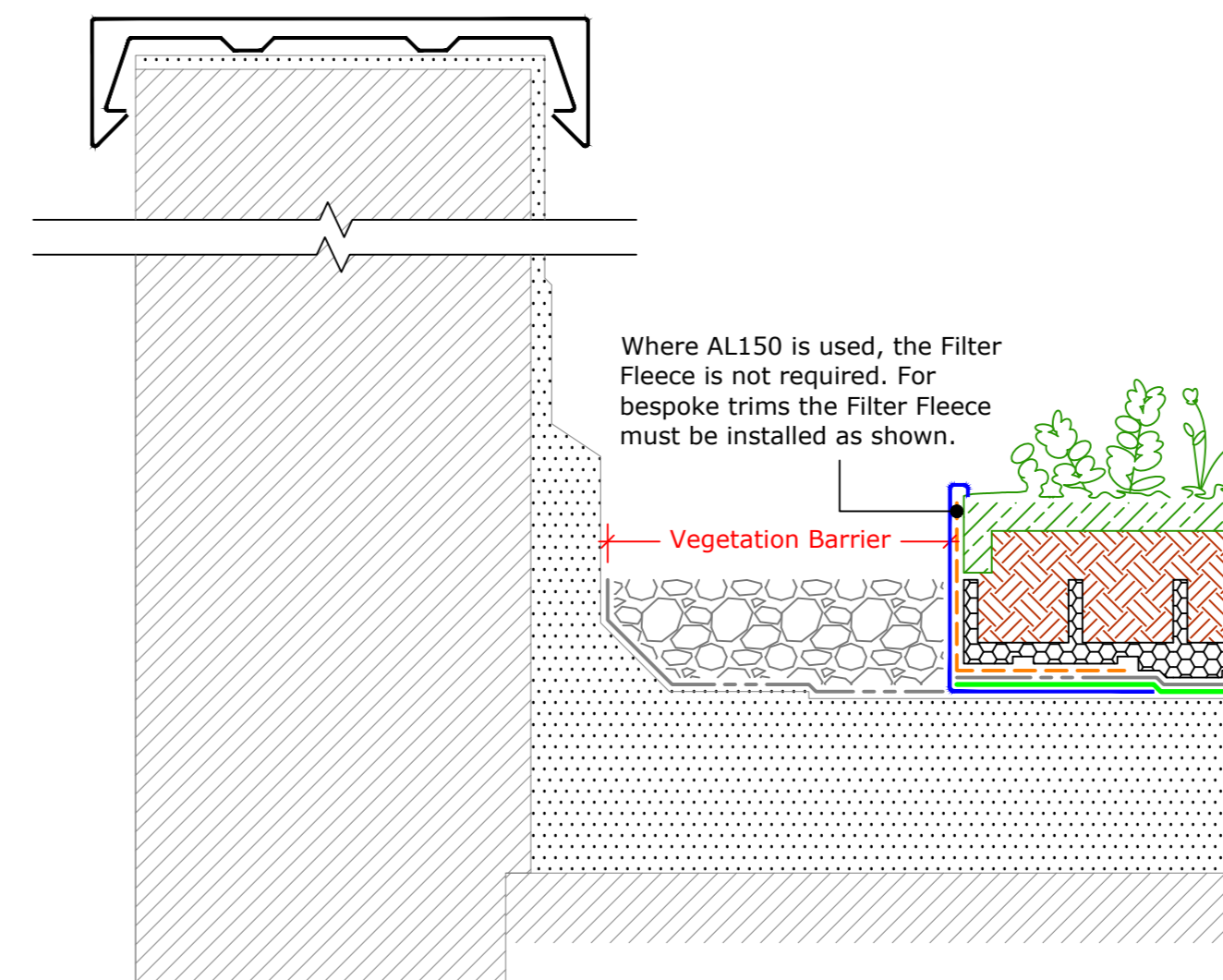
Upstand
(Drg.No: D0901/03-00W_5Deg+_201-ExtInt-S-RB_001)



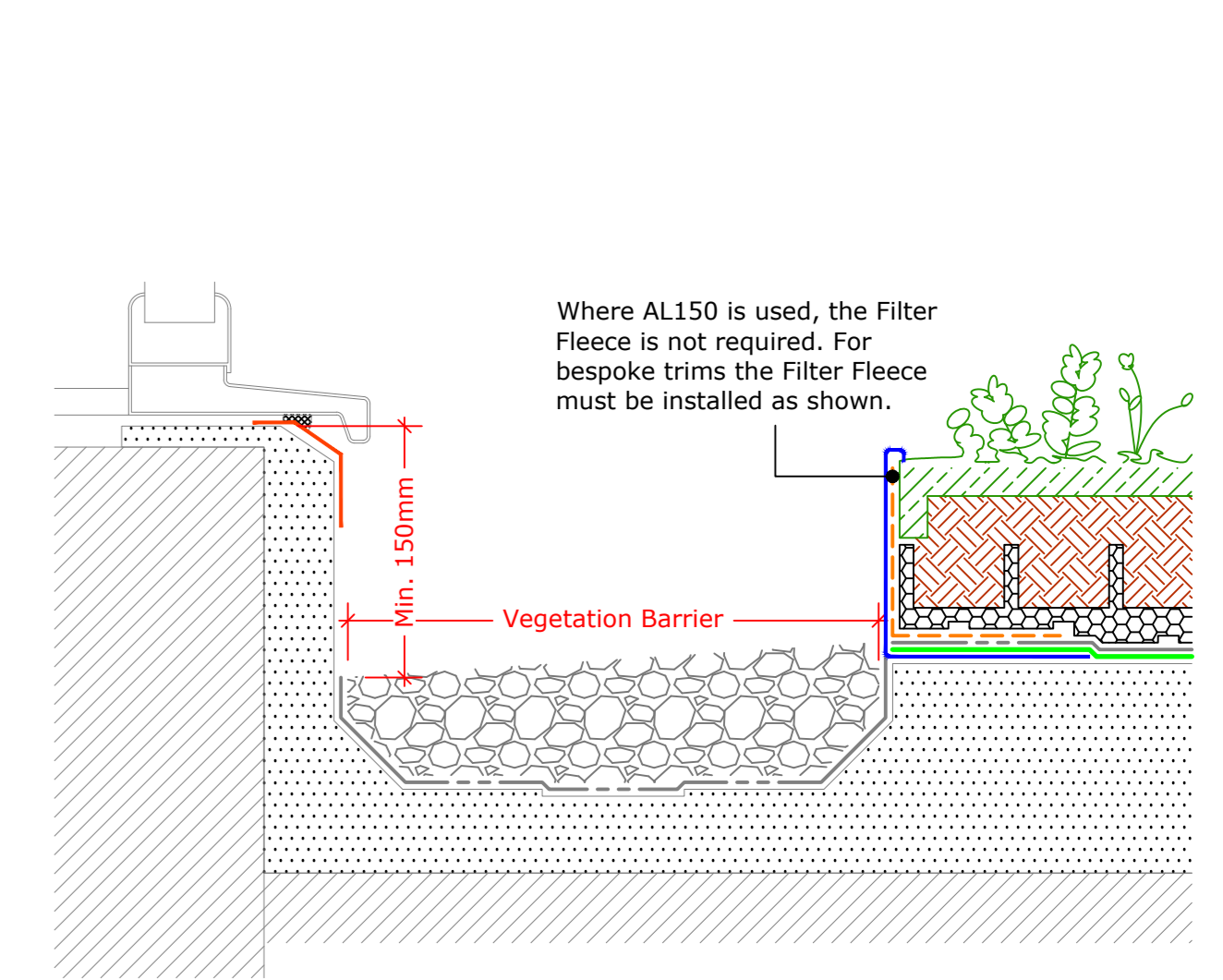
Upstand to Vertical Cladding or Slates/Tiles
(Drg.No: D0901/03-00W_5Deg+_201-ExtInt-S-RB_002)



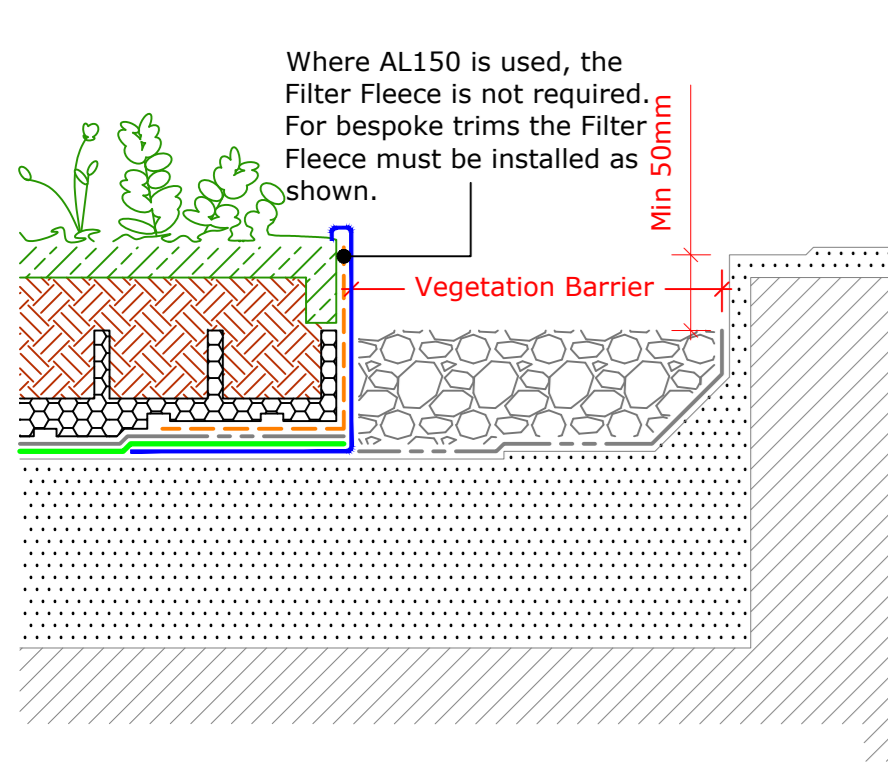
Upstand to Pitched Roof
(Drg.No: D0901/03-00W_5Deg+_001-ExtInt-S-RB_004)



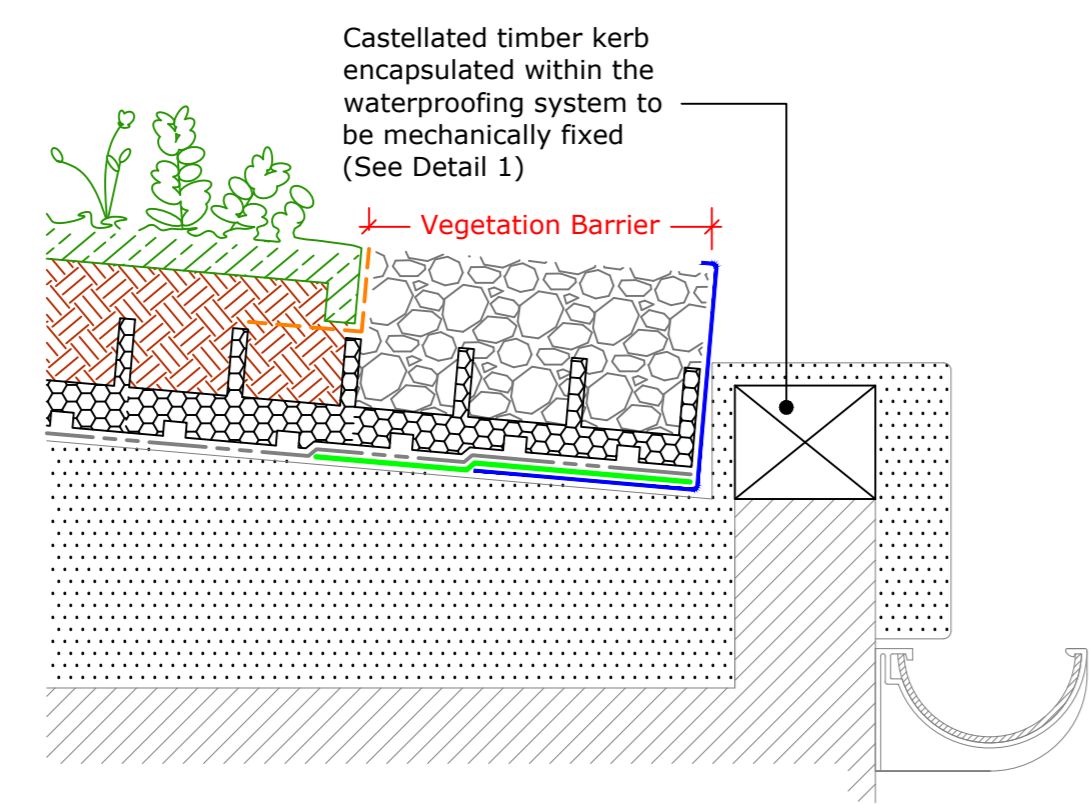
Upstand to Parapet
(Drg.No: D0901/03-00W_5Deg+_203-ExtInt-S-RB_001)



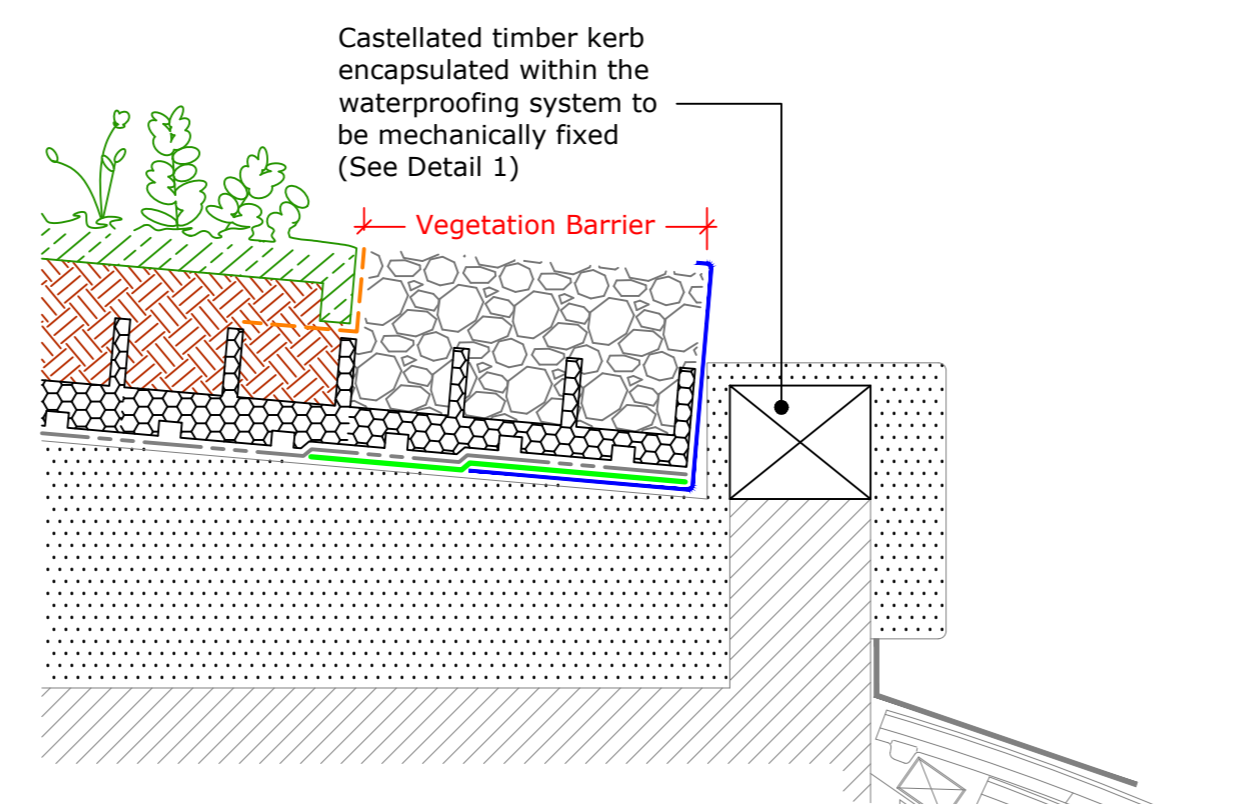
Internal Gutter to Clerestory Window
(Drg.No: D0901/03-00W_5Deg+_206-ExtInt-S-RB_003)



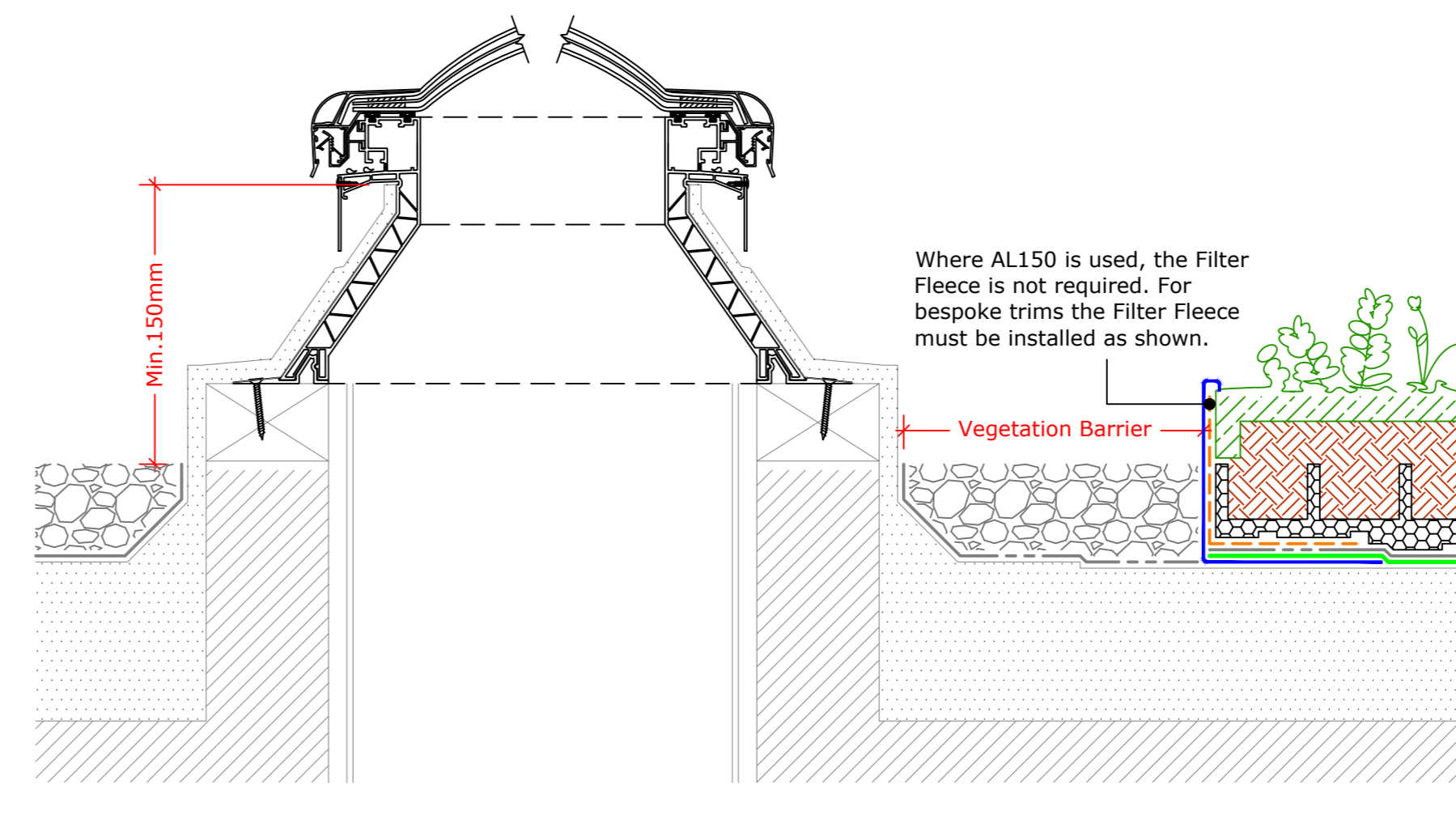
Perimeter Kerb - Extensive Only
(Drg.No: D0901/03-00W_5Deg+_002-ExtInt-S-RB_001)



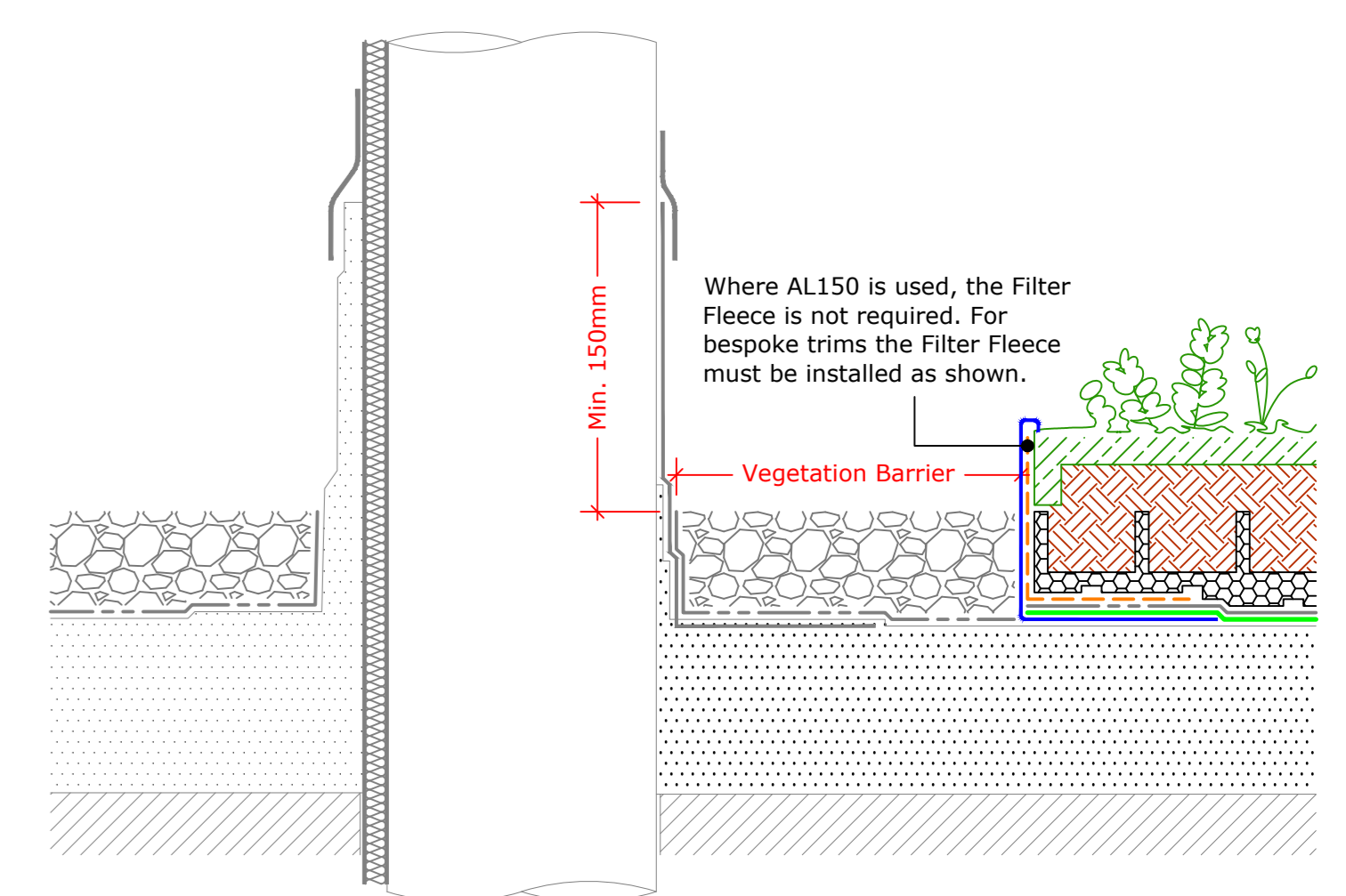
External Gutter - Extensive Only
(Drg.No: D0901/03-00W_5Deg+_006-ExtInt-S-RB_005)



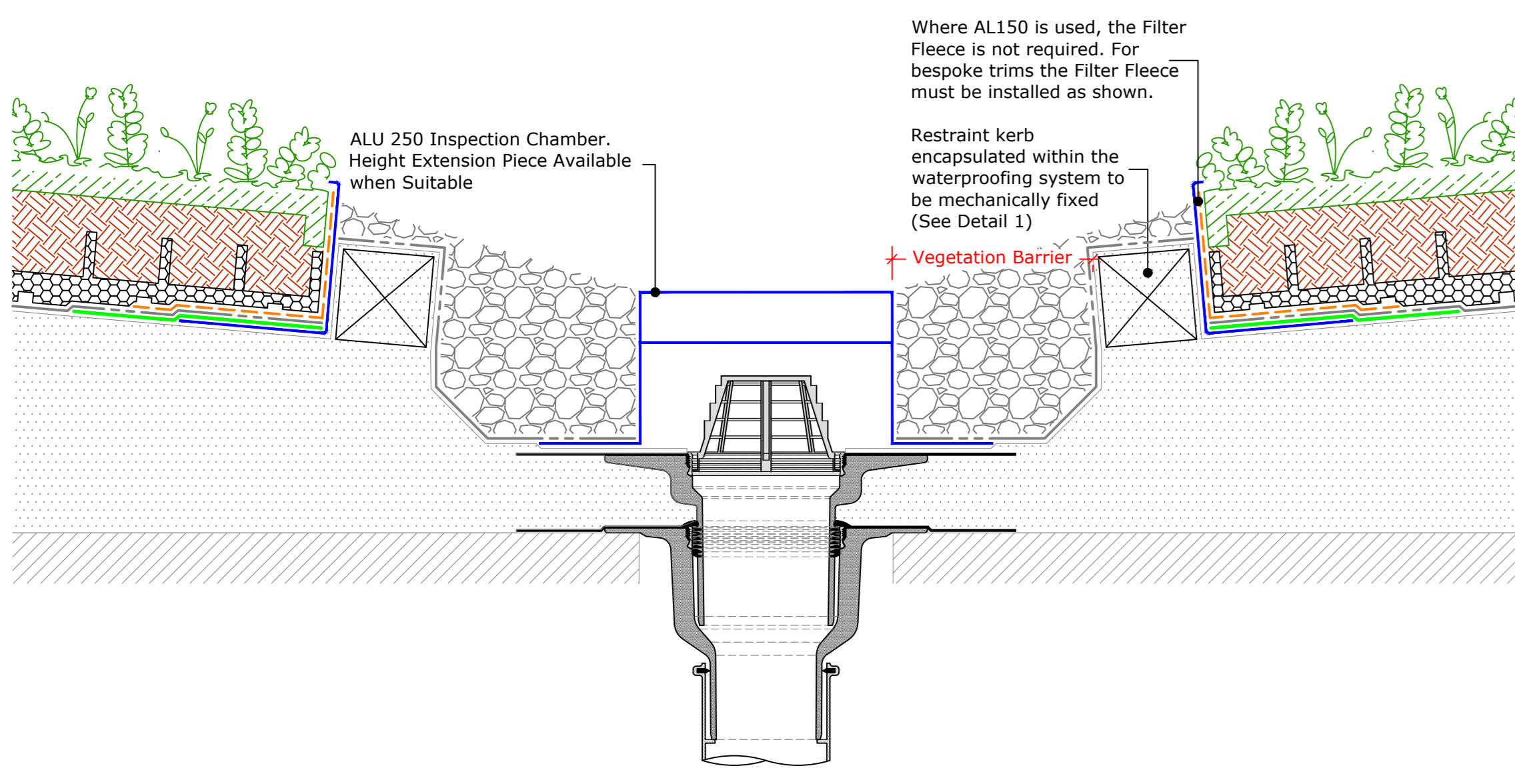
Detail to Mansard Roof - Extensive Only
(Drg.No: D0901/03-00W_5Deg+_006-ExtInt-S-RB_006)



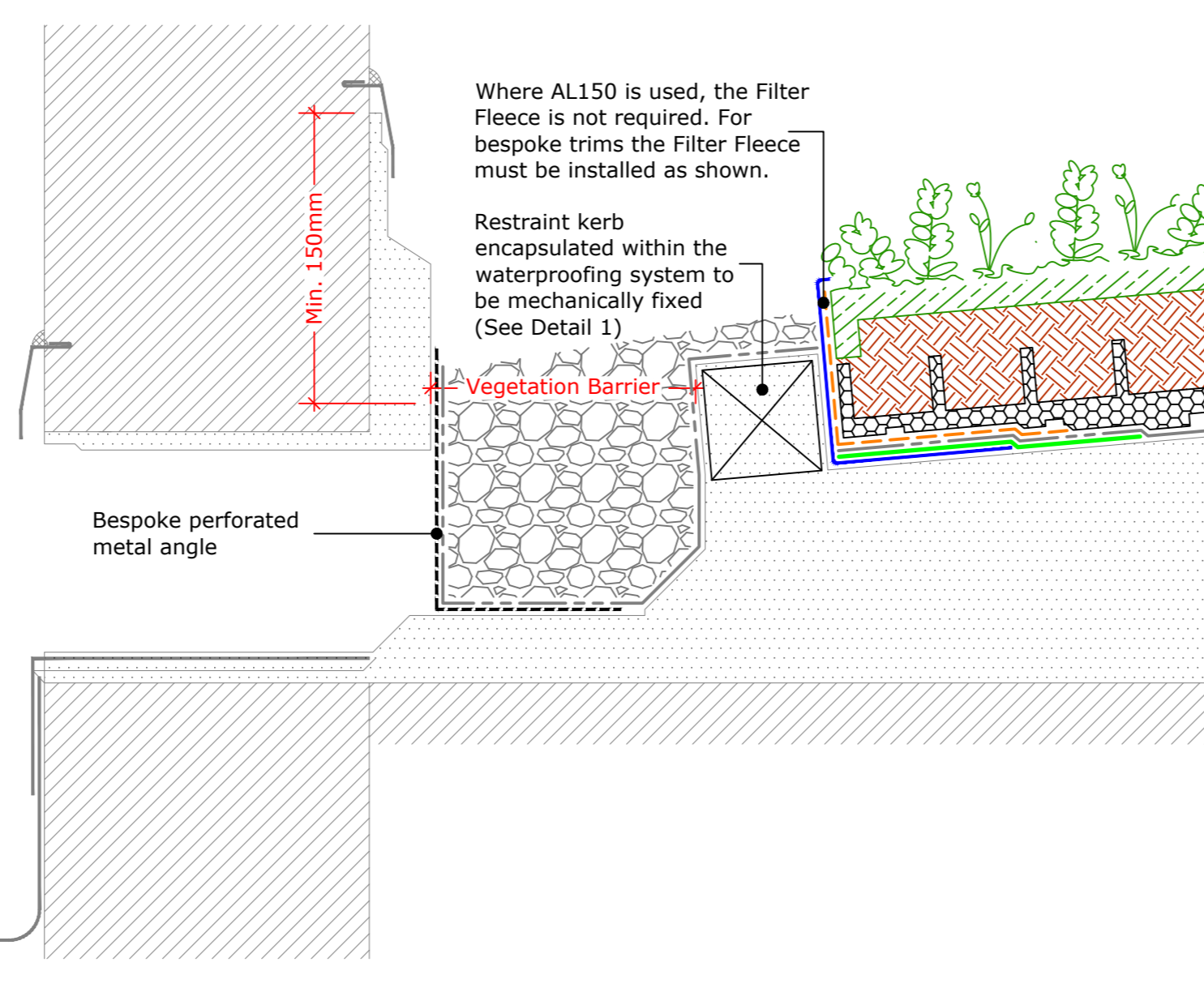
Upstand to Bauder Rooflight - Euroglaze
(Drg.No: D0901/03-00W_5Deg+_008-ExtInt-S-RB_001)



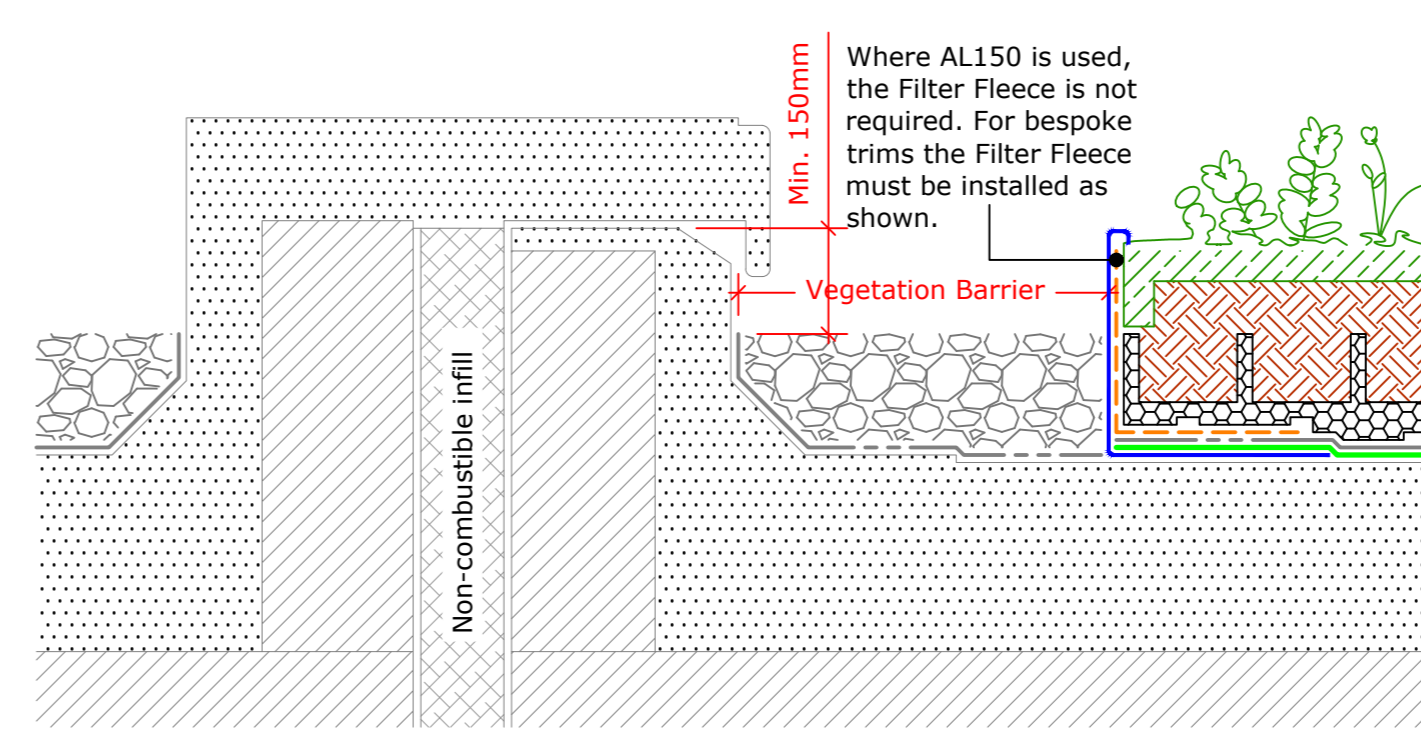
Upstand to Hot Flue or Cold Pipe
(Drg.No: D0901/03-00W_5Deg+_007-ExtInt-S-RB_002)



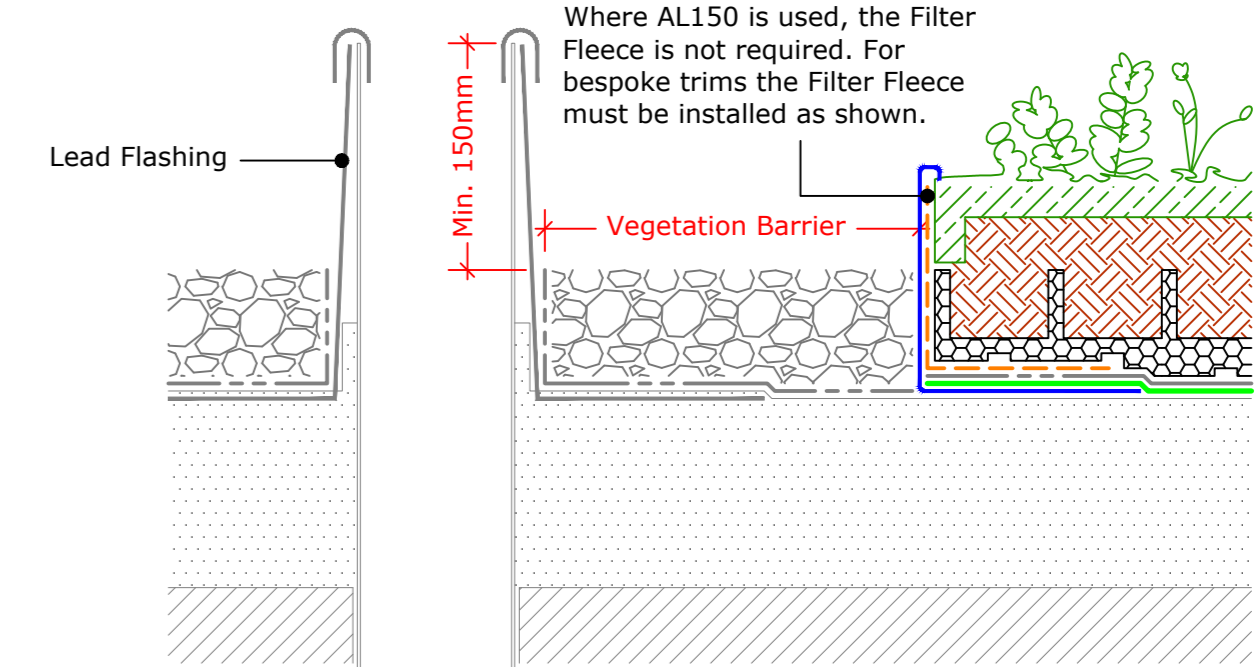
Bauder Outlet - Compact
(Drg.No: D0901/03-00W_5Deg+_006-ExtInt-S-RB_001)



Upstand - Lead Chute
(Drg.No: D0901/03-00W_5Deg+_206-ExtInt-S-RB_002)



Twin Kerb Expansion Joint
(Drg.No: D0901/03-00W_5Deg+_204-ExtInt-S-RB_001)



Soil Vent Pipe
(Drg.No: D0901/03-00W_5Deg+_04Deg-ExtInt-S-RB_001)

Key

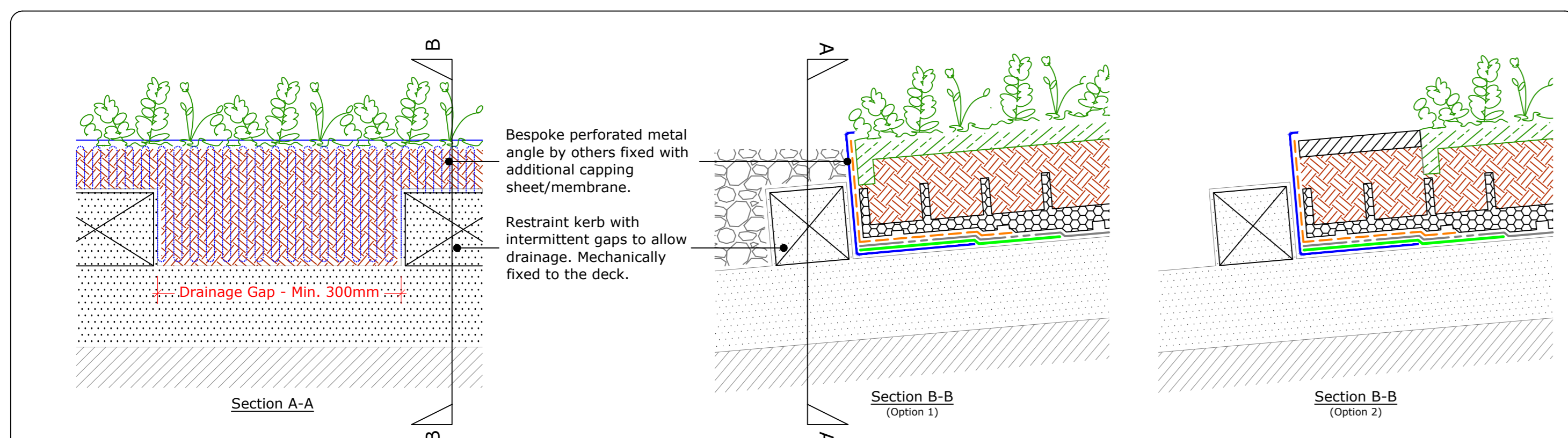
- Plug/Seed Mix Planting
- Bauder XF118 UK Native Species Wildflower Vegetation Blanket
- Bauder XF300 Sedum Vegetation Blanket
- (Vegetation type is indicative only. Refer to the specification for the correct vegetation to be used)
- Extensive/Biodiverse Substrate
- Bauder Reservoir Board
- Bauder Filter Fleece
- Bauder Protection Mat
- Additional Bauder Capping Sheet / Membrane to Secure the Metal Trim (Refer to Specification for Correct Option)
- Bauder Waterproofing System (Refer to Specific Bauder Waterproofing Details Drawings)
- Deck / Substrate
- Vegetation barrier (Minimum 50mm deep & 300mm wide. Width must be increased to at least 500mm when positioned adjacent to ceiling voids, windows or door openings. In accordance with both green and fire codes)
- AL150 Edge / Drainage trim. Secured in place by separate pieces of torch applied Bauder Fire Capping Sheet (For vegetation/substrate build-up depths greater than 150mm, a bespoke perforated edge/drainage trim is required)

IMPORTANT NOTE:
This drawing shows alternative options. For the correct solution to be used, refer to the project specific specification.

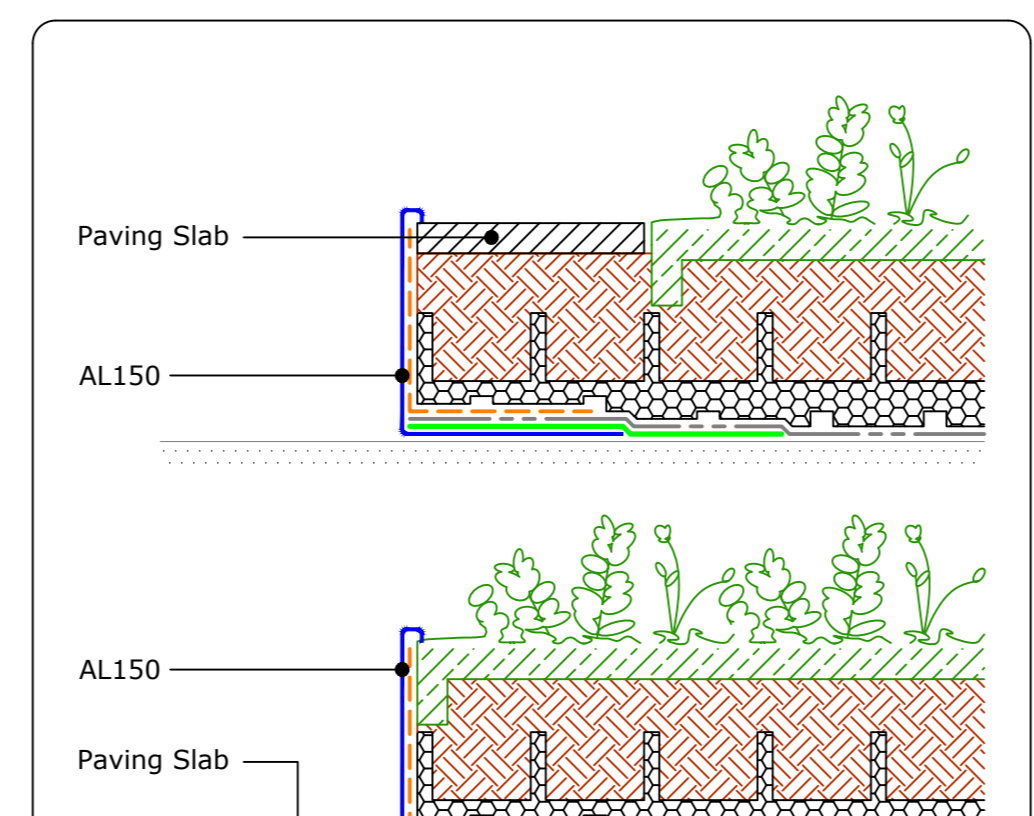
IMPORTANT NOTES:

- This detail is suitable for the following Bauder Systems:
Bauder Total Green Roof System
Bauder Green
Bauder Thermal / Thermoplastic (Excluding Intensive)
- This Drawing Shows Alternative Options. For the Correct Solution to be used, Refer to the Project Specific Specification.
- Do not scale to ascertain dimensions.
- All dimensions to be checked and verified on site prior to commencement and associated drawings.
- This drawing is to be read in conjunction with the specification and associated drawings.
- This detail is a guideline only, representing typical detailing conditions and illustrate the correct application of the above Bauder System. It may be necessary to modify this detail to suit specific project design constraints and application. For clarity the method of attachment has not been shown.
- Provision should be made by the installer for mechanically fixing the top

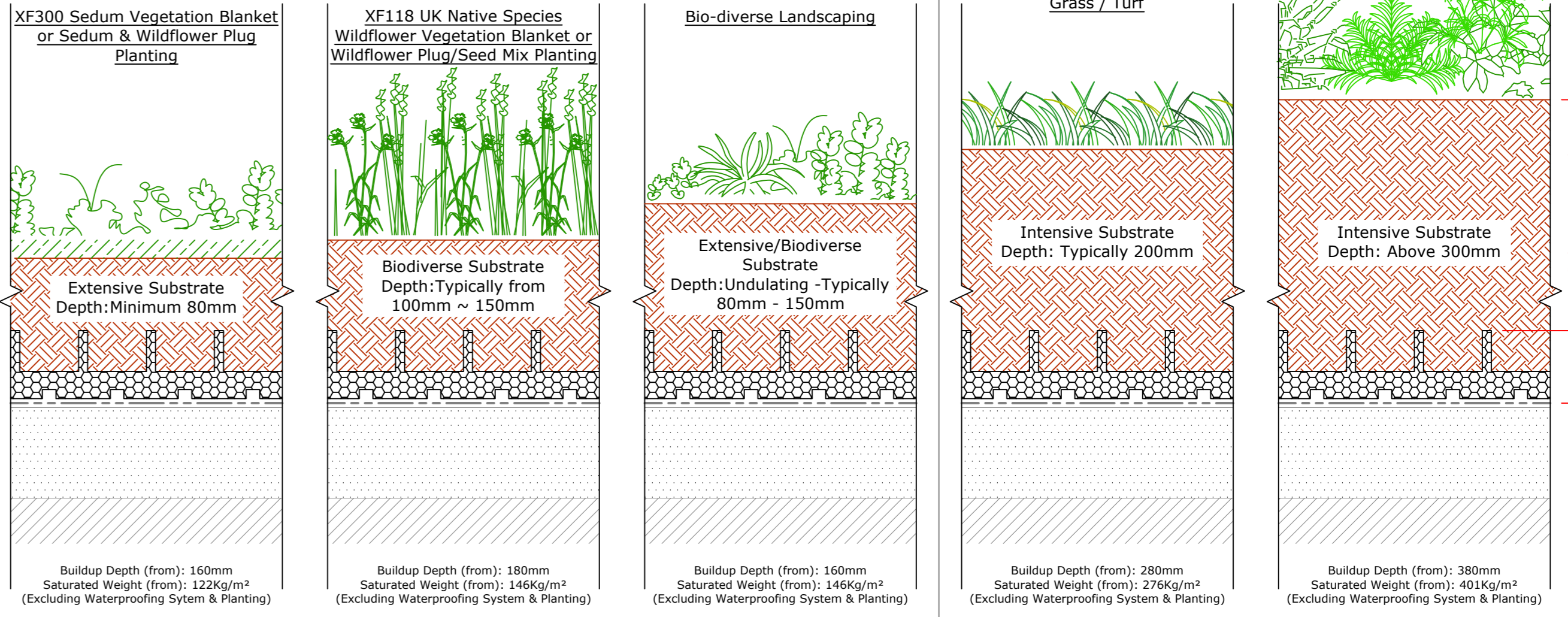
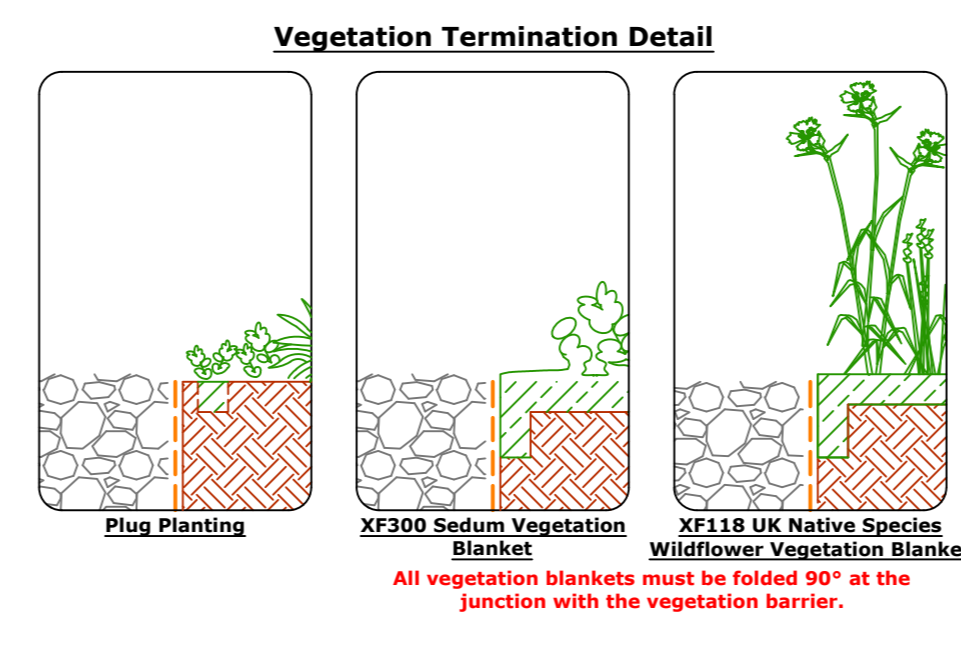
Rev	Date	Description	Drawn By



DETAIL 1 - Drainage Layer Restraint Kerb (Roof Slope 5°+)
A parapet wall or restraint kerb must be provided to support the water storage / drainage board at the base of the slope. This should be included within the deck construction and reference made within the waterproofing specification also. This in turn will restrain and stabilise the landscaping against imposed shear load forces. Refer to the specification for intermittent drainage gap spacing.



Edge Detail for Slopes 10°+
Where the roof slope is greater than 10°, paving slabs must be used instead of the pebble vegetation barrier. Paving slabs can also be used where the vegetation barrier is undesirable.



Extensive Soft Landscaping
Substrate Based Landscape Options
(Heights and weight loadings may vary, allowance must be made for any fully established planting / vegetation and landscaping)



UK OFFICE
Bauder Limited
70 Lansdown Road, Ipswich,
Suffolk IP1 0QR,
England
Tel: +44 (0)1473 257671
Fax: +44 (0)1473 230761
Email: enquiries@bauder.co.uk
bauder.co.uk

IRELAND OFFICE
Bauder Limited
O'Duffy Centre, Cross Lane,
Carrmarron, Co. Monaghan,
Ireland
Tel: +353 (0)47 9692 333
Fax: +353 (0)47 9692 879
Email: ireland@bauder.ie
bauder.ie

Extensive/Intensive Green Roof System (Slope 5°+)

Scale	Drawing Number
A1:5	D0901/03-00W_5Deg+_200-ExtInt-S-RB_001