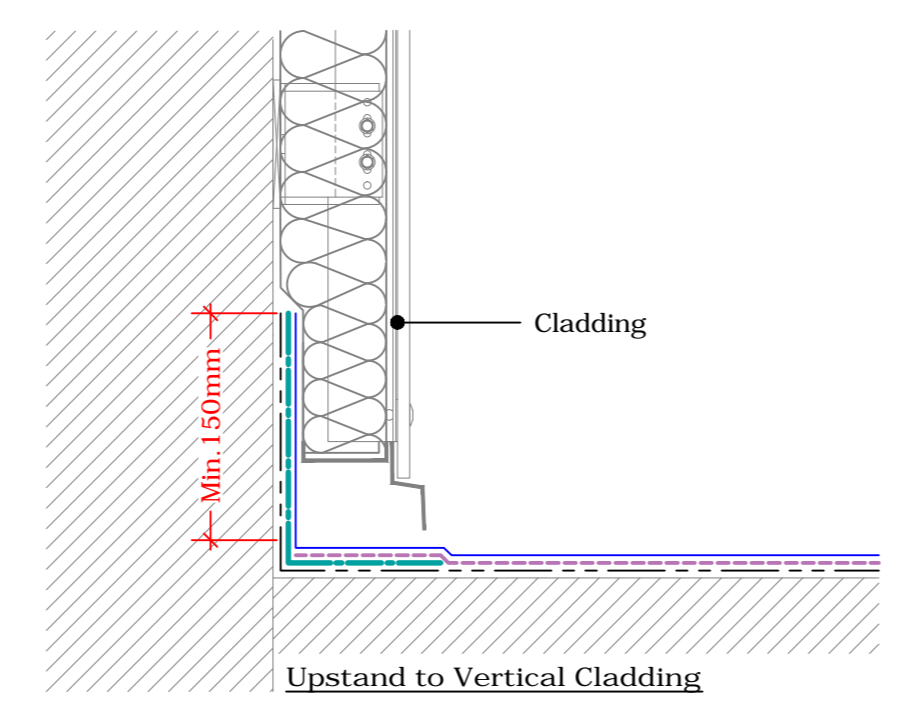
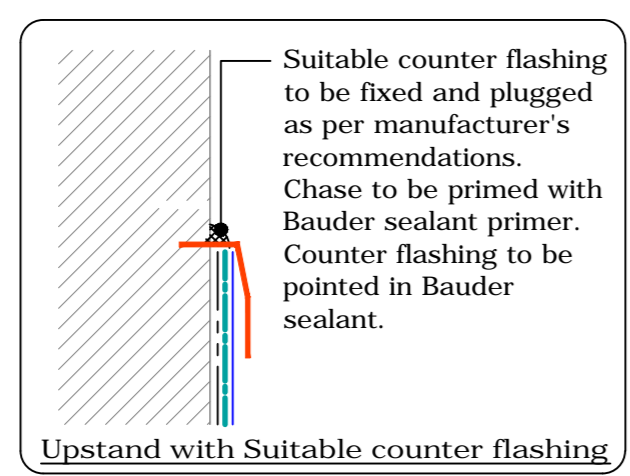
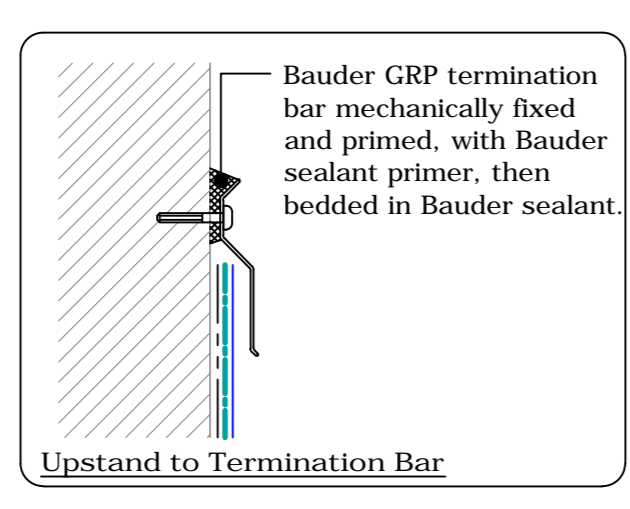
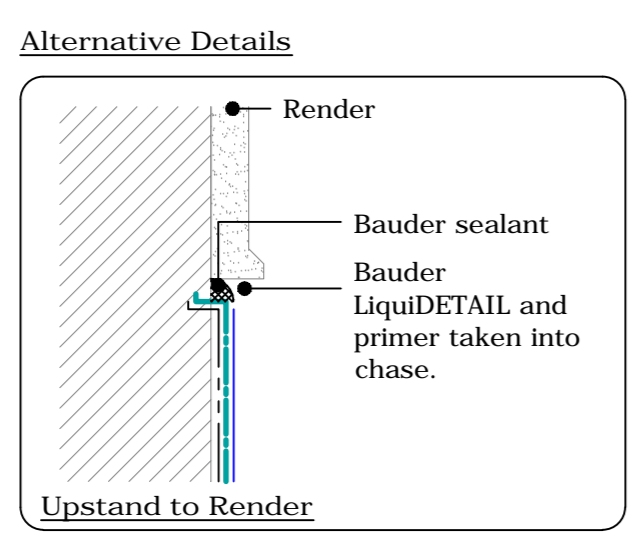
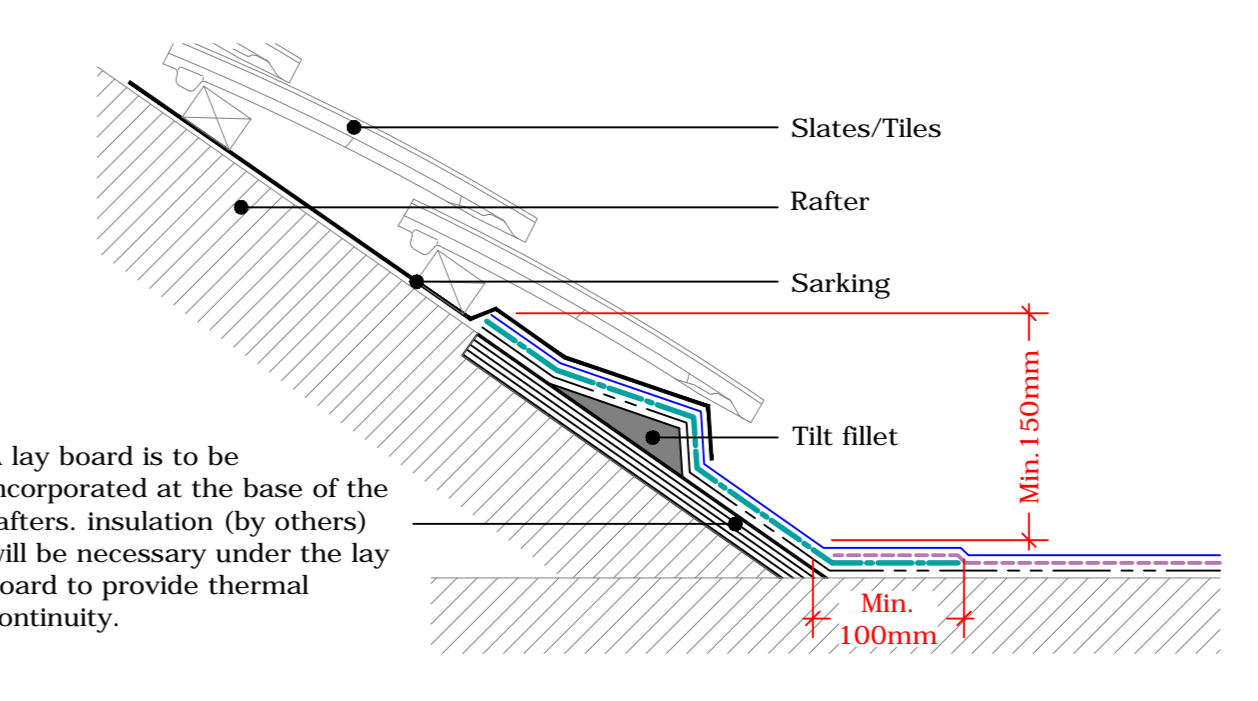
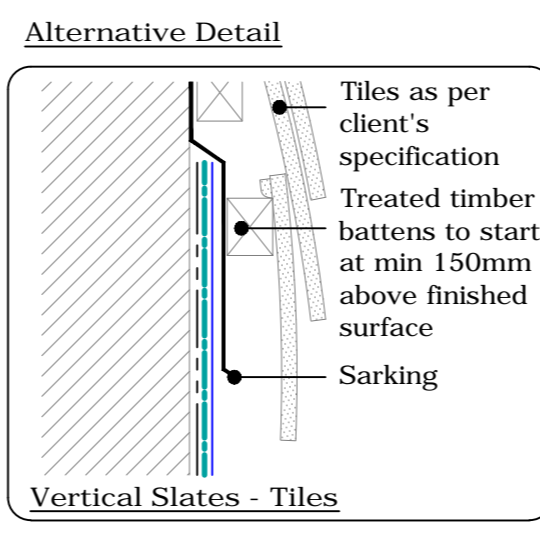


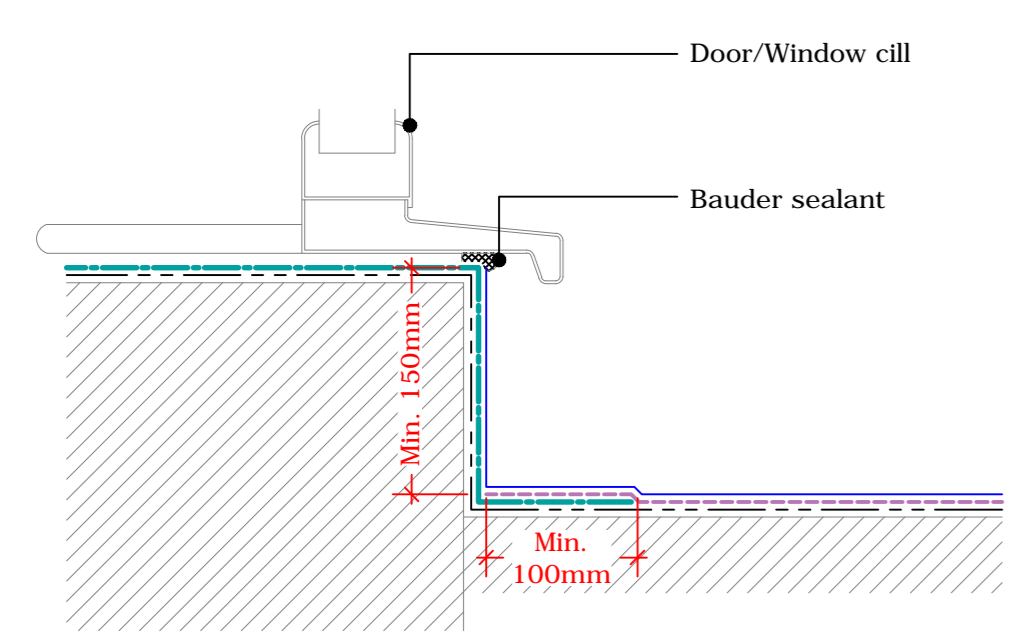
Upstand Option
(Drg.No: D0703-00C_101_001)



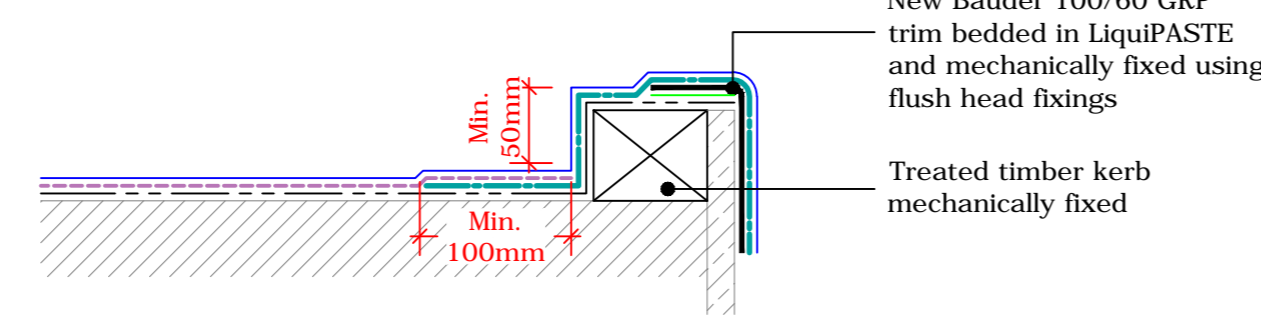
Upstand to Vertical Cladding or Slates/Tiles
(Drg.No: D0703-00C_101_002)



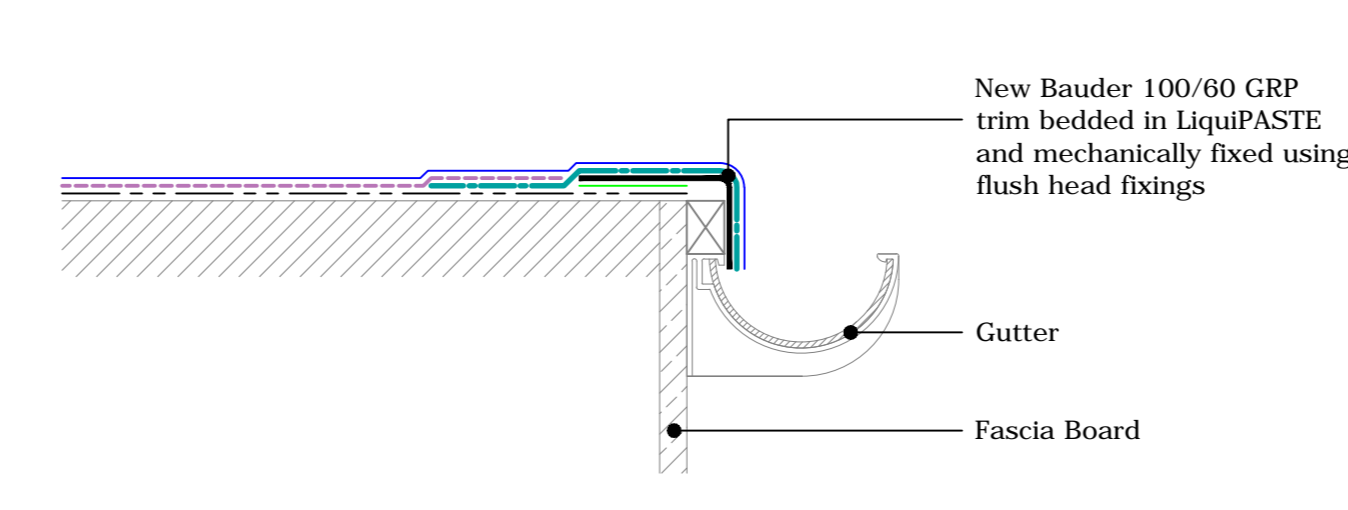
Upstand to Pitched Roof
(Drg.No: D0703-00C_001_004)



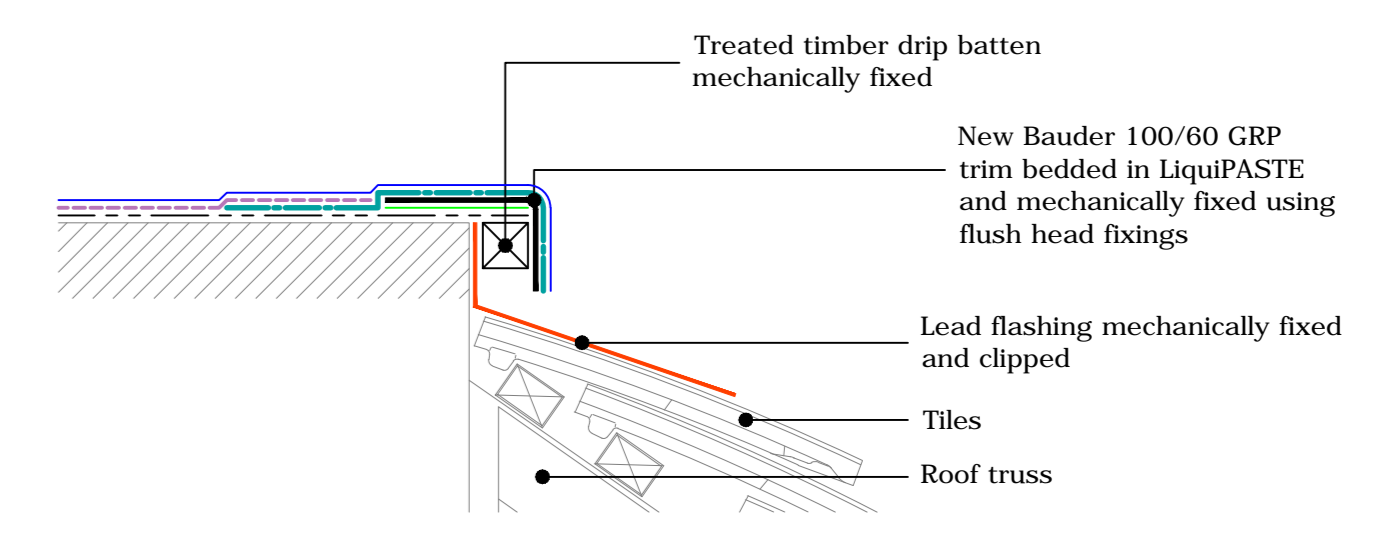
Upstand to Raised Cills
(Drg.No: D0703-00C_101_003)



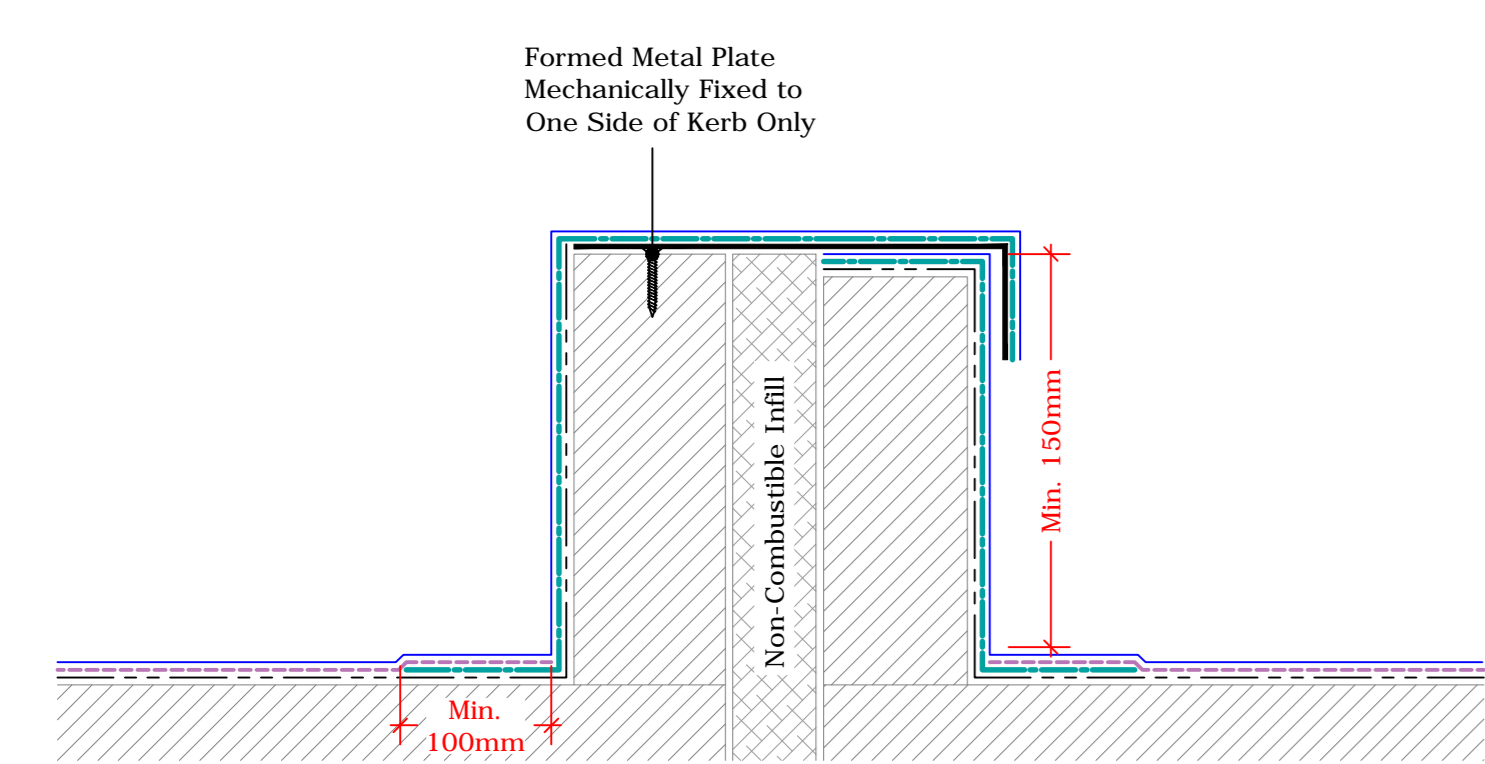
Perimeter Kerb
(Drg.No: D0703-00C_002_001)



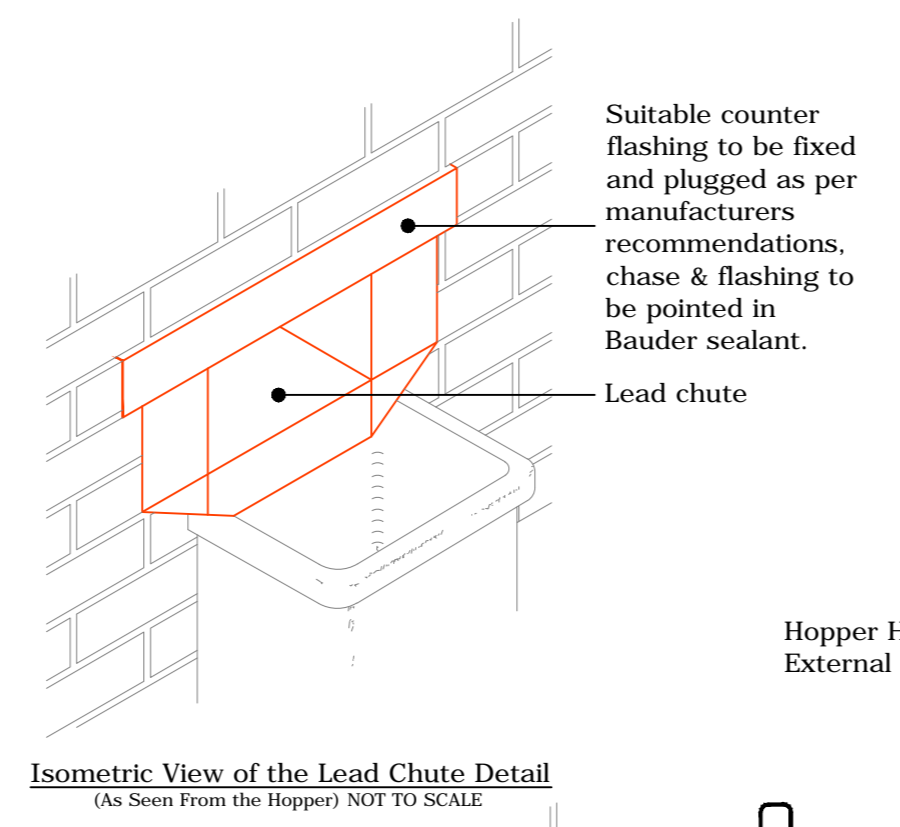
External Gutter
(Drg.No: D0703-00C_006_005)



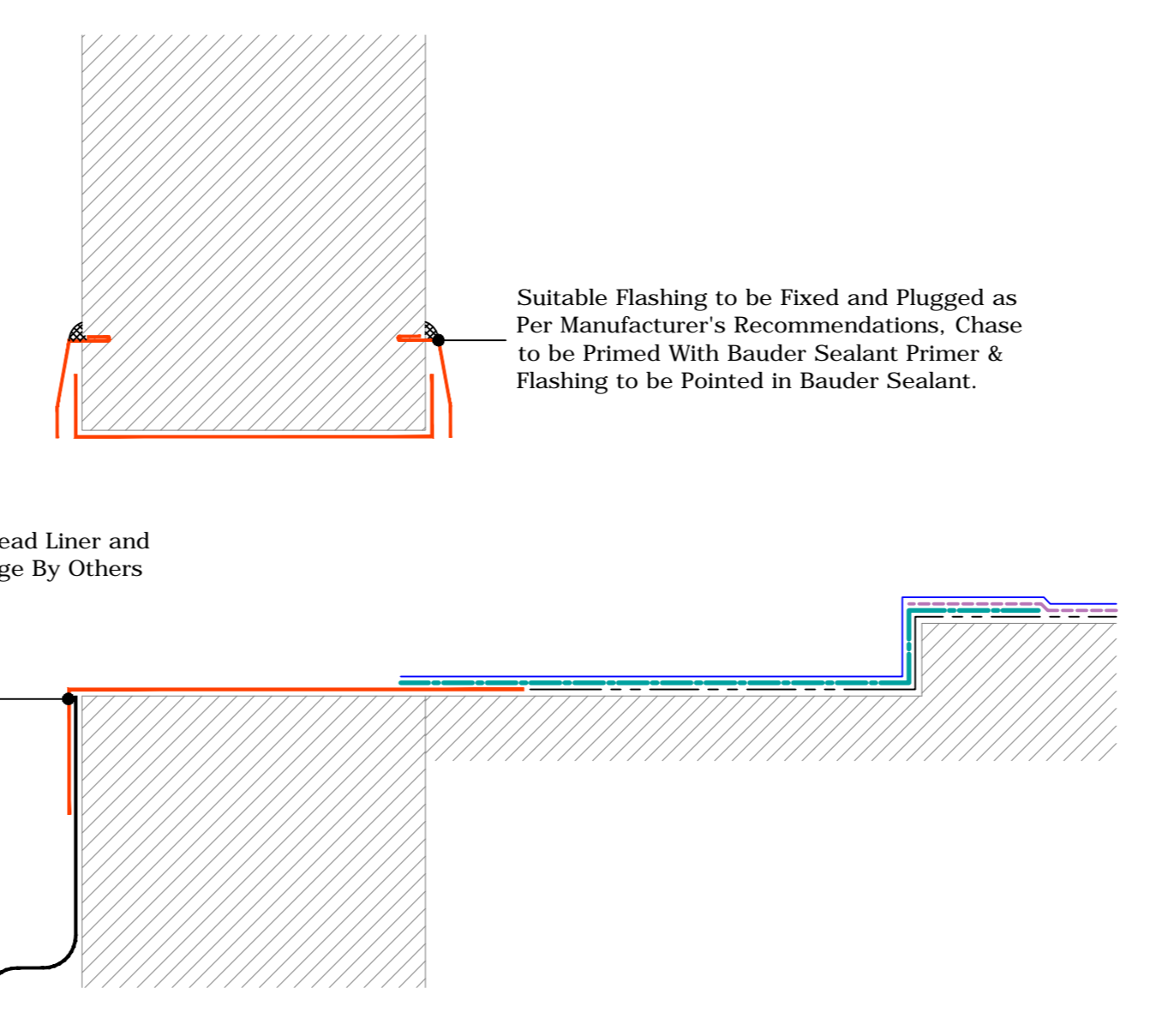
Mansard Roof
(Drg.No: D0703-00C_006_007)



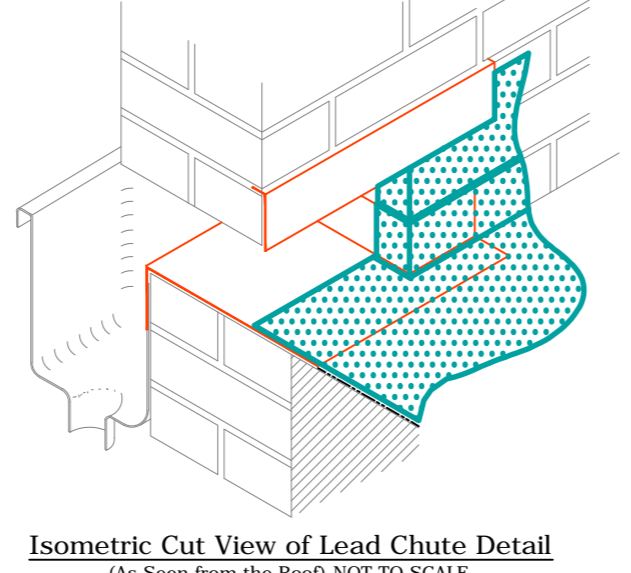
Twin Kerb Expansion Joint
(Drg.No: D0703-00C_004_004)



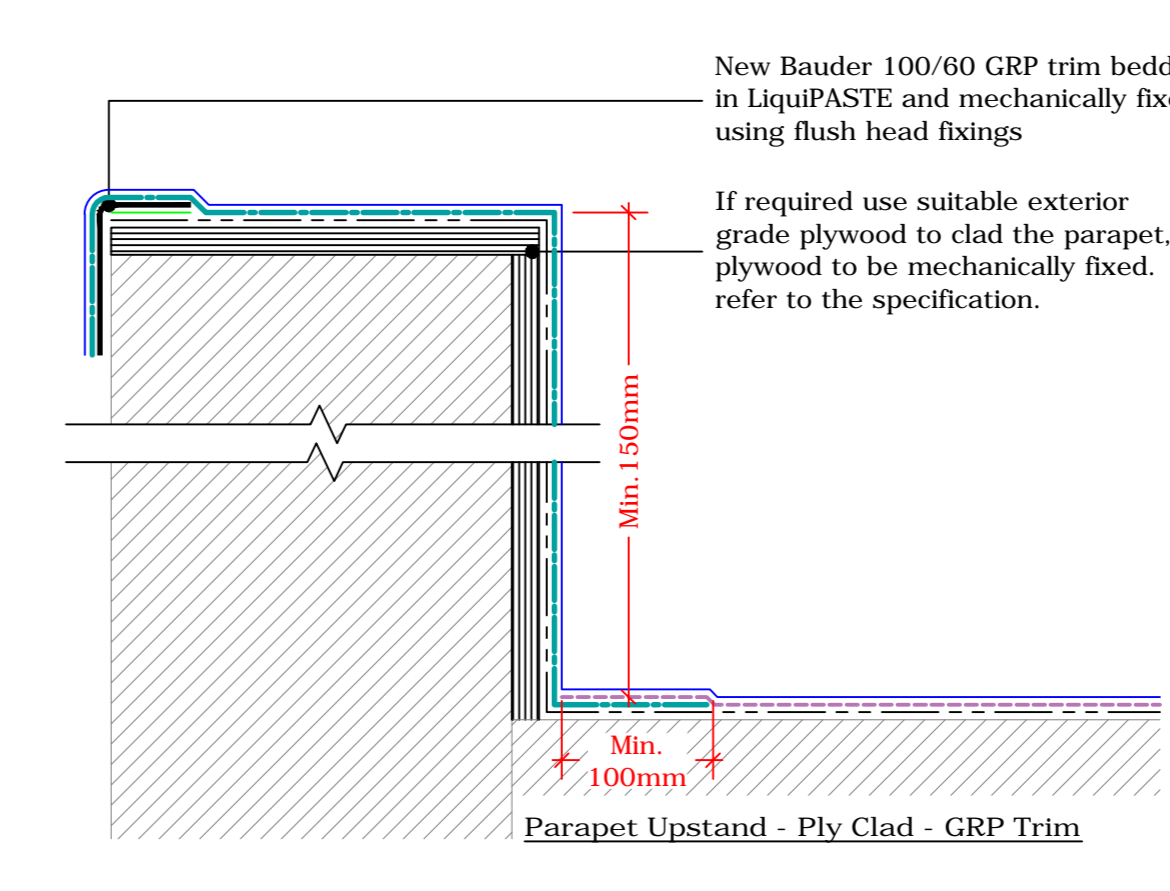
Isometric View of the Lead Chute Detail
(As Seen From the Hopper) NOT TO SCALE



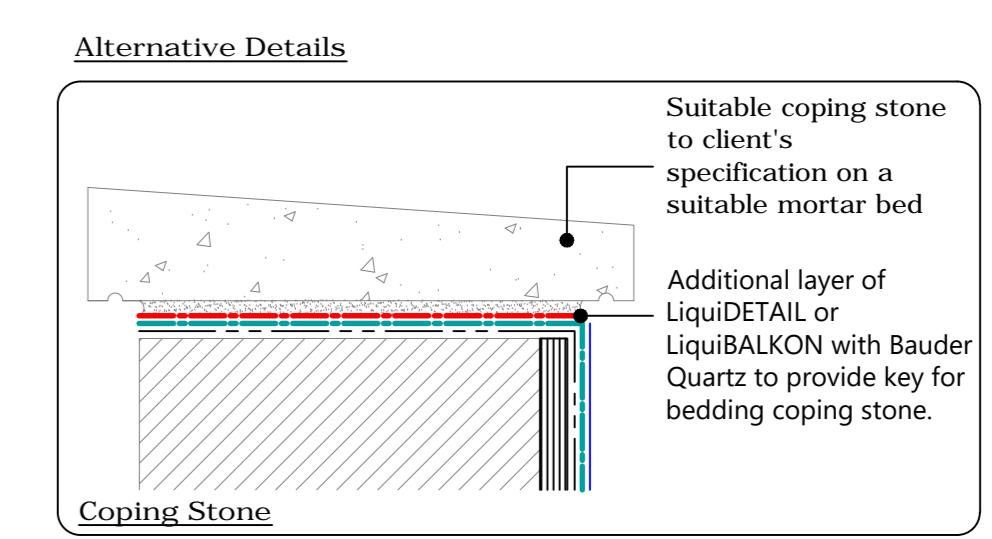
Upstand - Lead Chute
(Drg.No: D0703-00C_106_002)



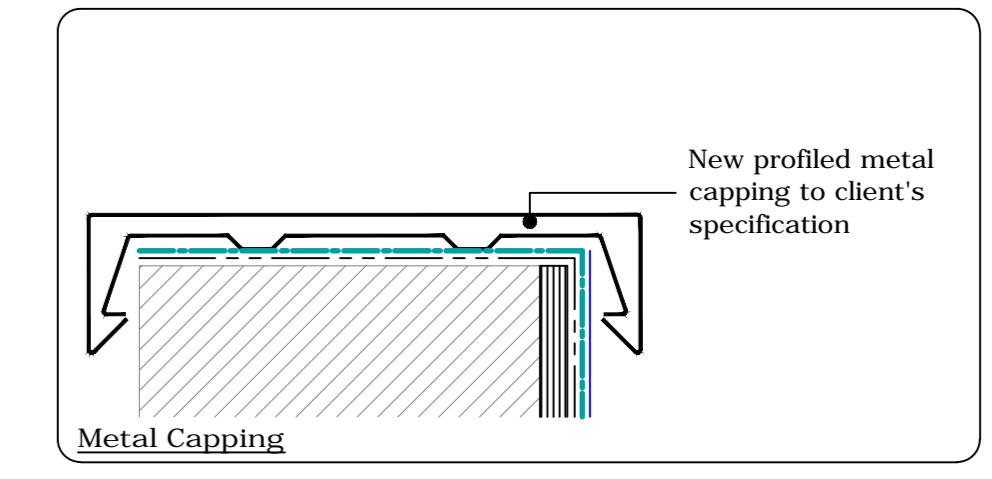
Isometric Cut View of Lead Chute Detail
(As Seen from the Roof) NOT TO SCALE



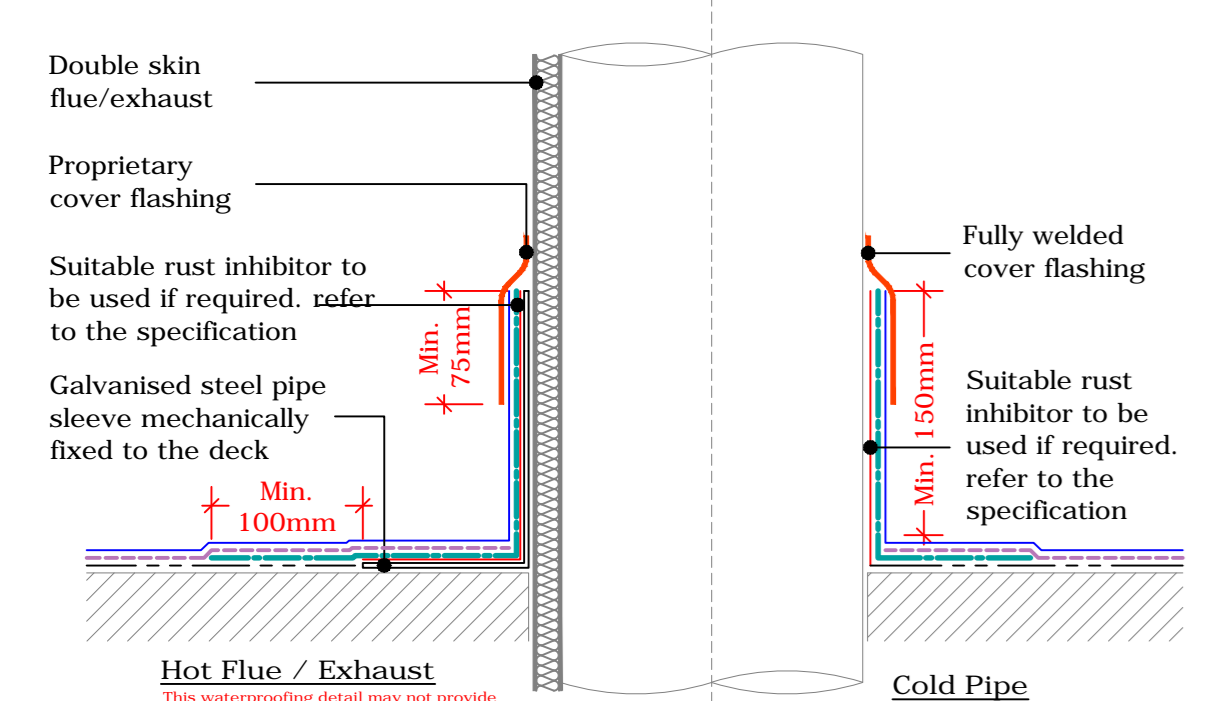
Parapet Upstand - Ply Clad - GRP Trim
(Drg.No: D0703-00C_103_001)



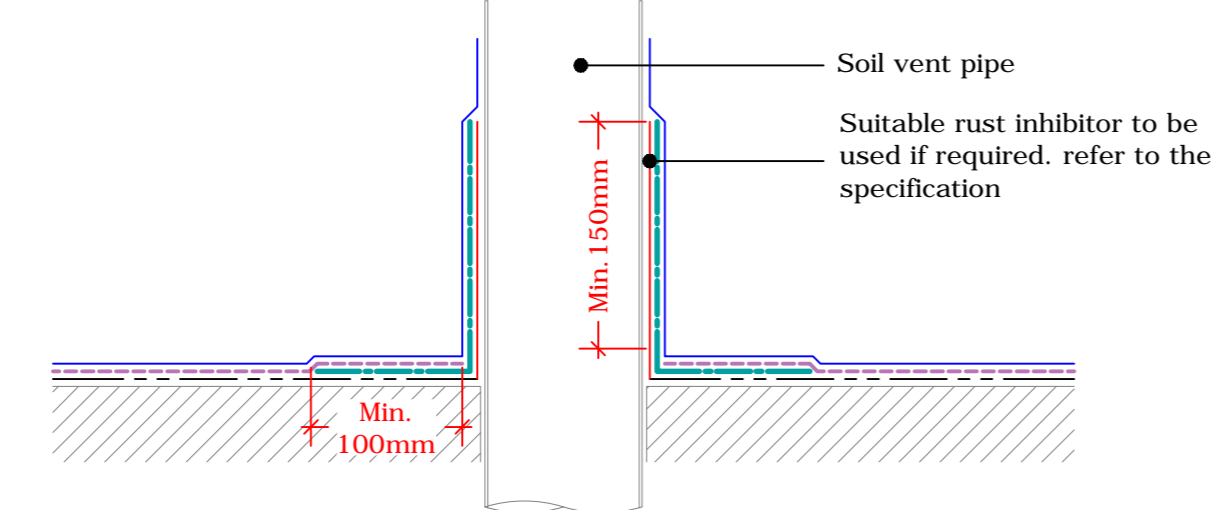
Coping Stone



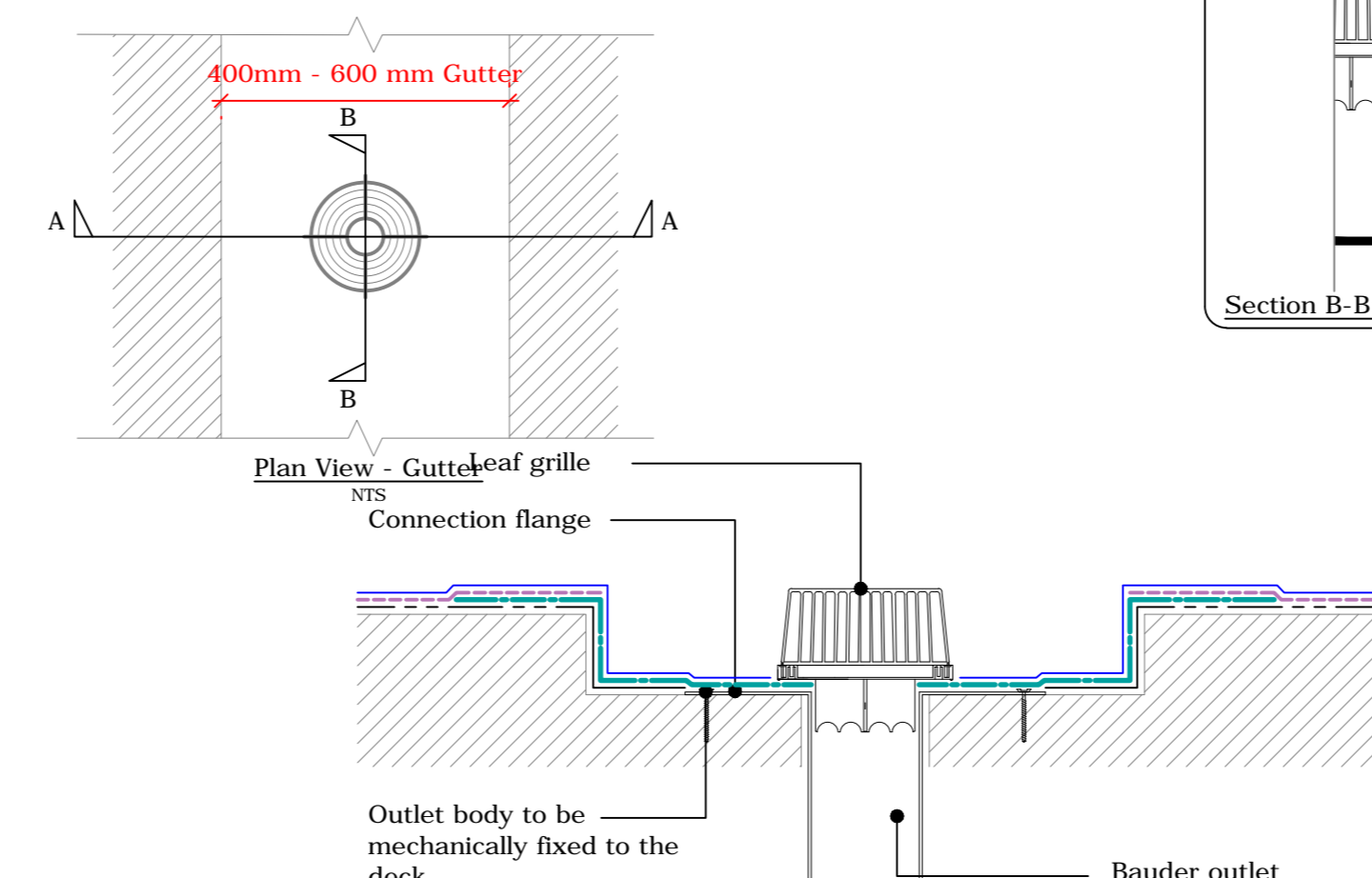
Metal Capping



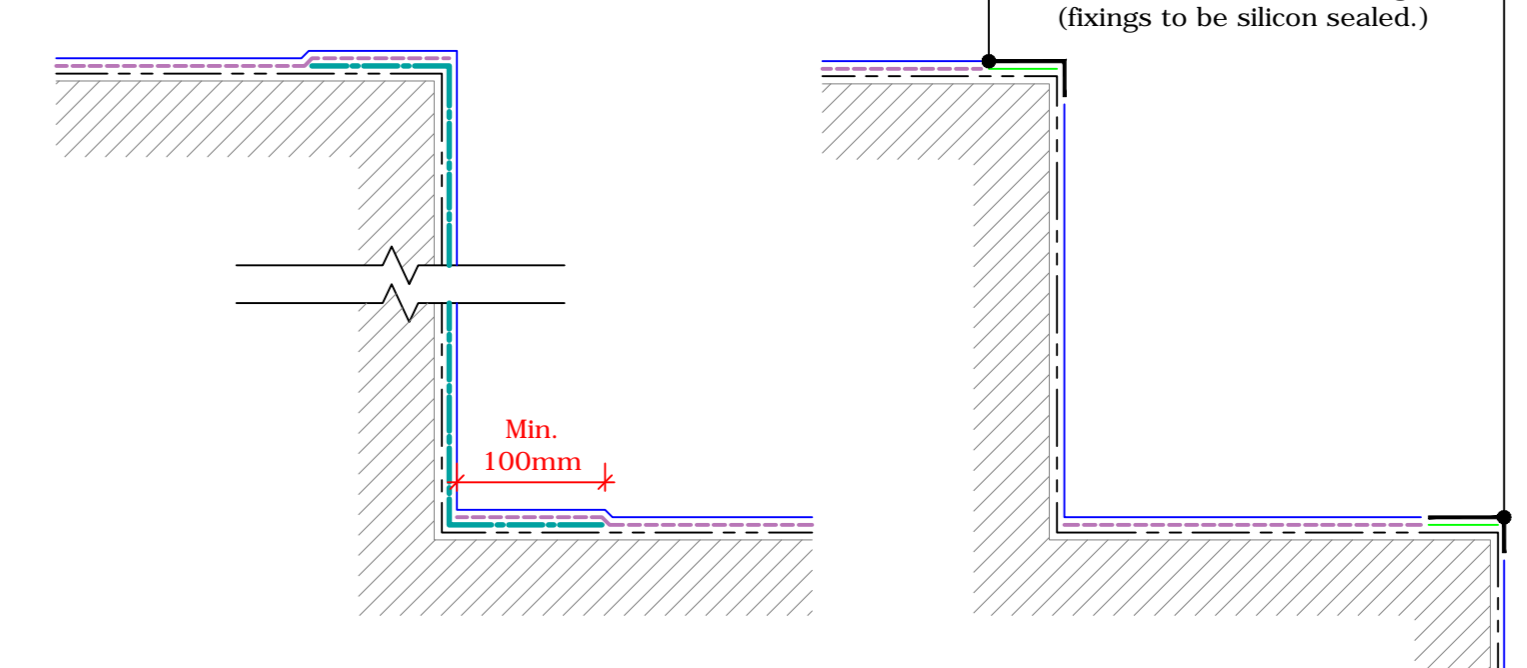
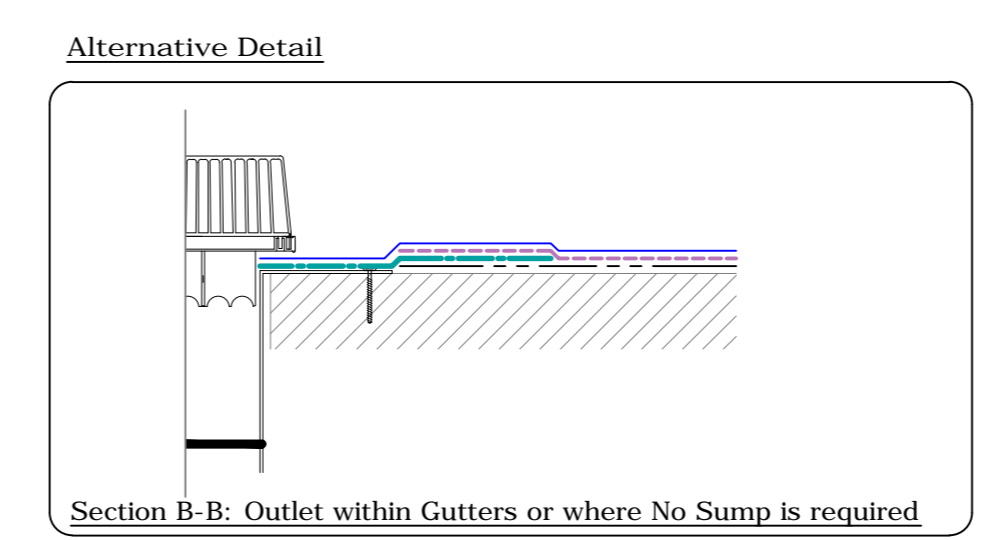
Upstand to Hot Flue / Exhaust and Cold Pipe
(Drg.No: D0703-00C_007_003)



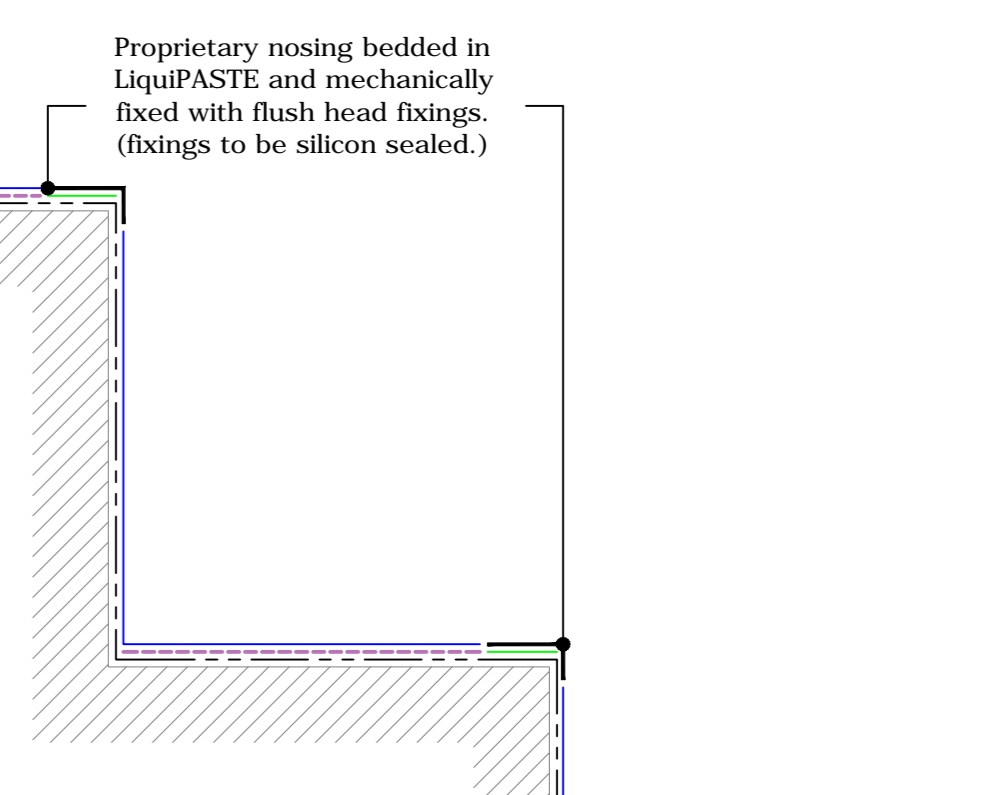
Soil Vent Pipe
(Drg.No: D0703-00C_007_001)



Bauder Thermofol Rigid PVC Outlet
(Drg.No: D0703-00C_006_001)



Change In Levels
(Drg.No: D0703-00C_010_001)



Stair Treads

Key	
	Bauder LIQUIDFINISH
	Bauder LIQUIDPAVE 'R' with Bauder QUARTZ
	For Plywood Decks or where the surface is to be BURIED (e.g. below paving etc.) Refer to the Bauder Reinforced Balcony, Walkway & Terrace Drawings.
	Bauder LIQUIDBALKON (Incorporating 110g Reinforcement Fleece)
	Bauder LIQUIDETAH (Incorporating 110g Reinforcement Fleece)
	Bauder LIQUIDPRIME
	Bauder LIQUIDPASTE
	Deck / Substrate

- IMPORTANT NOTES:**
- This detail is suitable for the following Bauder Systems: Bauder LIQUIDTEC Systems.
 - This Drawing Shows Alternative Options. For the Correct Solution to be Used, Refer to the Project Specific Specification.
 - Do not waste or overstate dimensions.
 - All dimensions to be checked and verified on site prior to commencement of work.
 - This drawing is to be read in conjunction with the specification and associated drawings.
 - This detail is a guideline only, representing typical detailing conditions and illustrate the correct application of the above Bauder Systems. It may be necessary to modify this detail to suit specific project design constraints and conditions.
 - Refer to the Bauder Specification for the product description and method of application. For clarity the method of attachment has not been shown.
 - Provision should be made by the installer for mechanically fixing the top leading edge of all upstand details in excess of 200mm in height using appropriate fasteners.

BAUDER

UK OFFICE: Bauder Limited, 70 Ladbroke Road, Ipswich, Suffolk, IP1 0DL, England. Tel: +44 (0)1473 257671 Fax: +44 (0)1473 257671 Email: technical@bauder.co.uk

IRELAND OFFICE: Bauder Limited, O'Duffy Centre, Cross Lane, Carrigrohane, Co. Wexford, Ireland. Tel: +353 (0)42 8662 333 Fax: +353 (0)42 8662 870 Email: technical@bauder.ie

LiquiTEC - UNREINFORCED - TYPICAL DETAILS
(Balcony, Walkway & Terrace)

Drawing Details	
Scale:	1:5
Drawn By:	CD
Checked By:	PH
Approved By:	MB
Date:	23.04.20