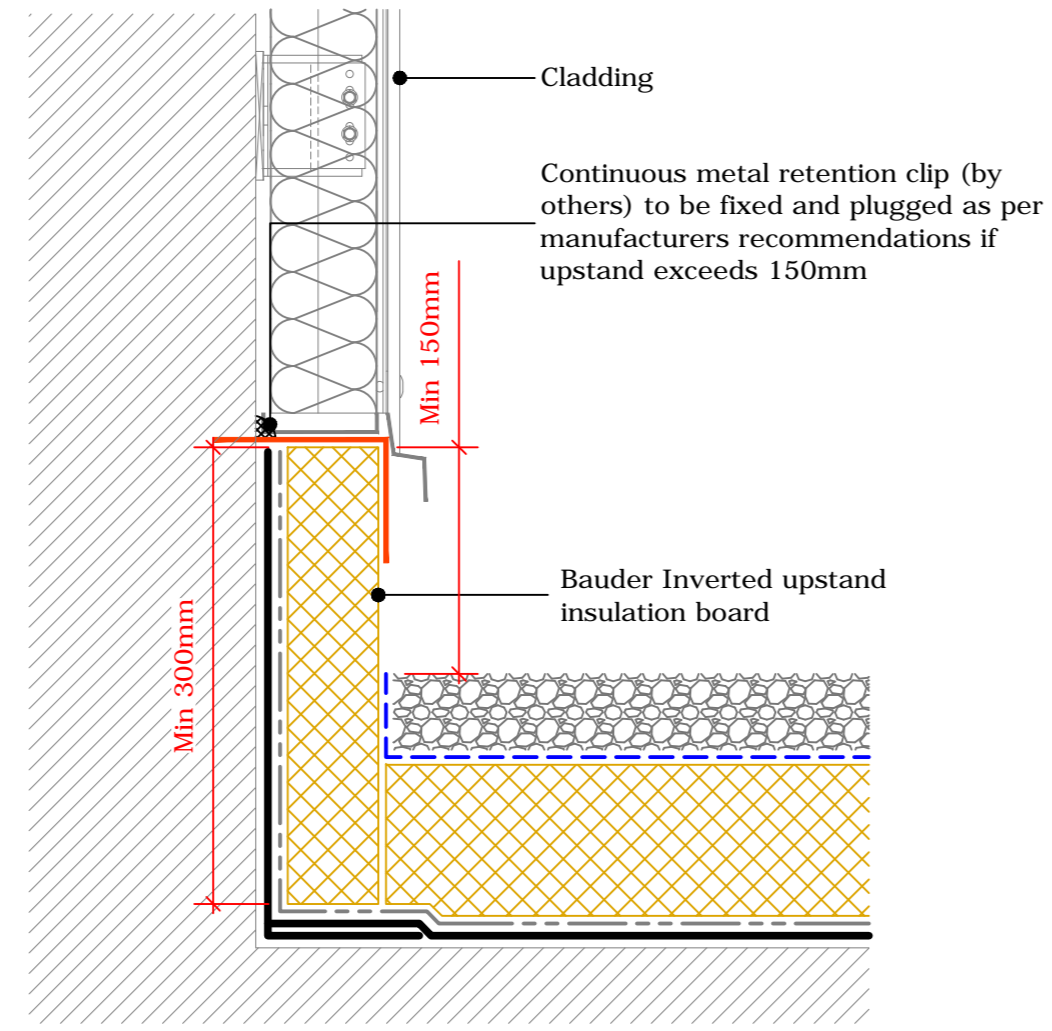
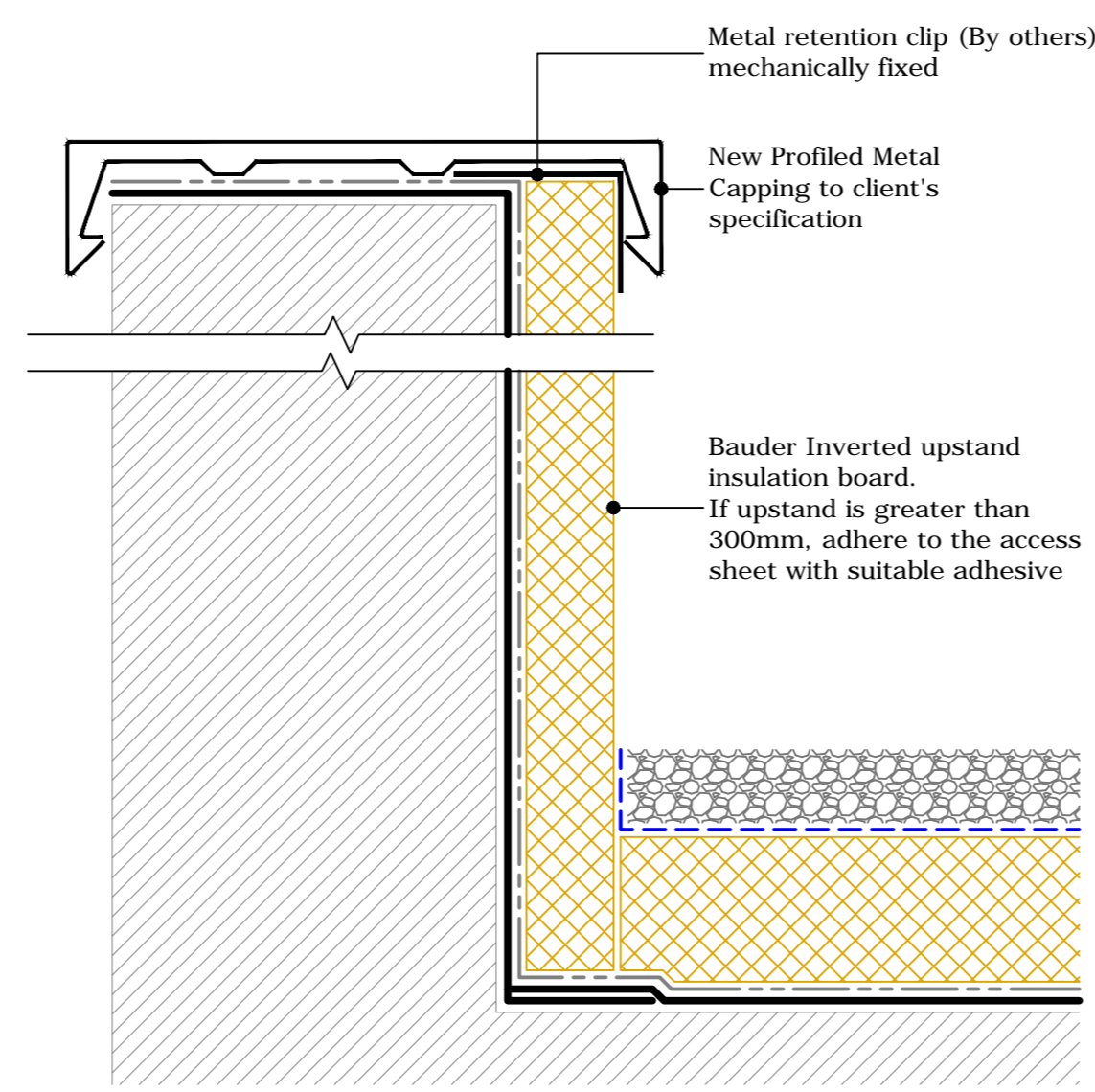


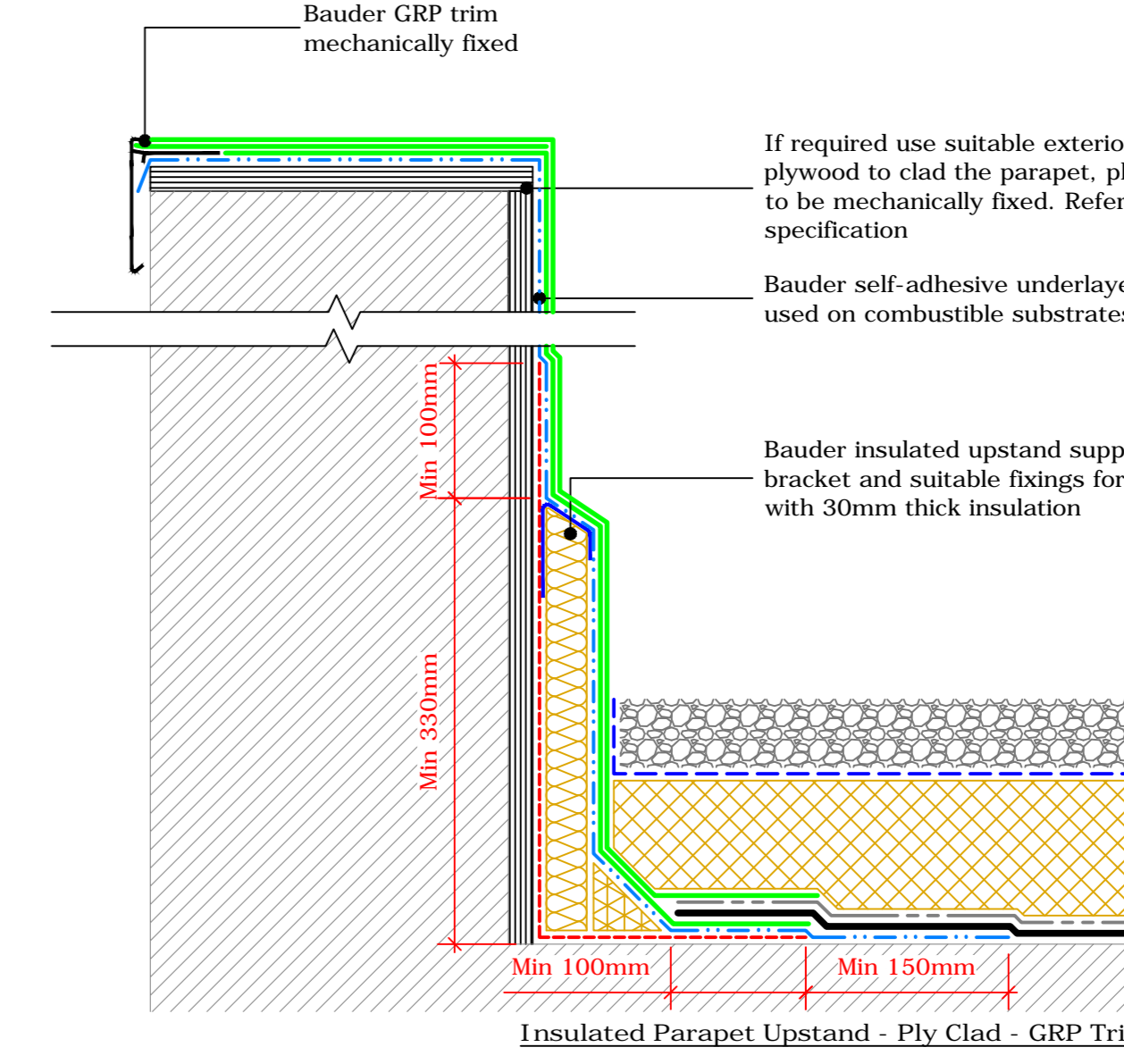
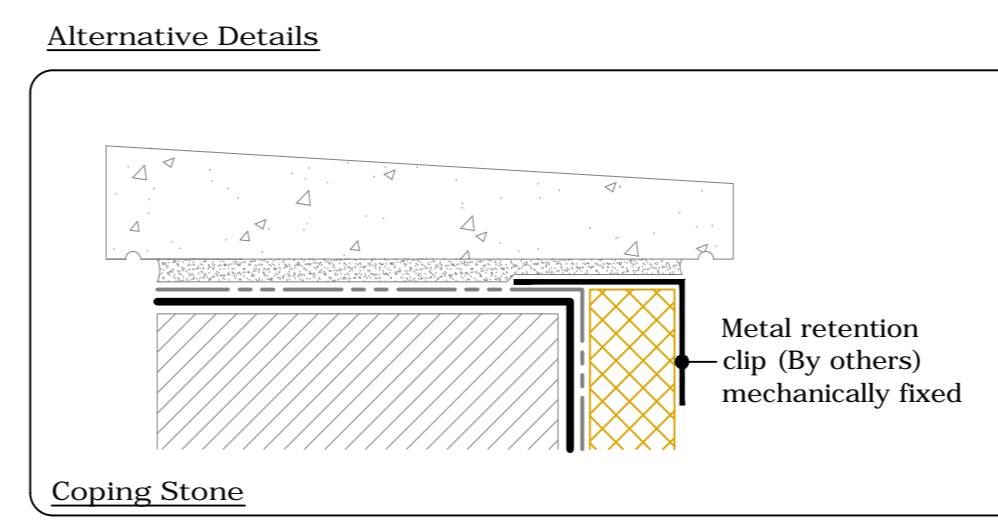
Insulated Upstands - Upstand To Brickwork - Suitable Flashing
(Drg.No: D0700-001_201-001)



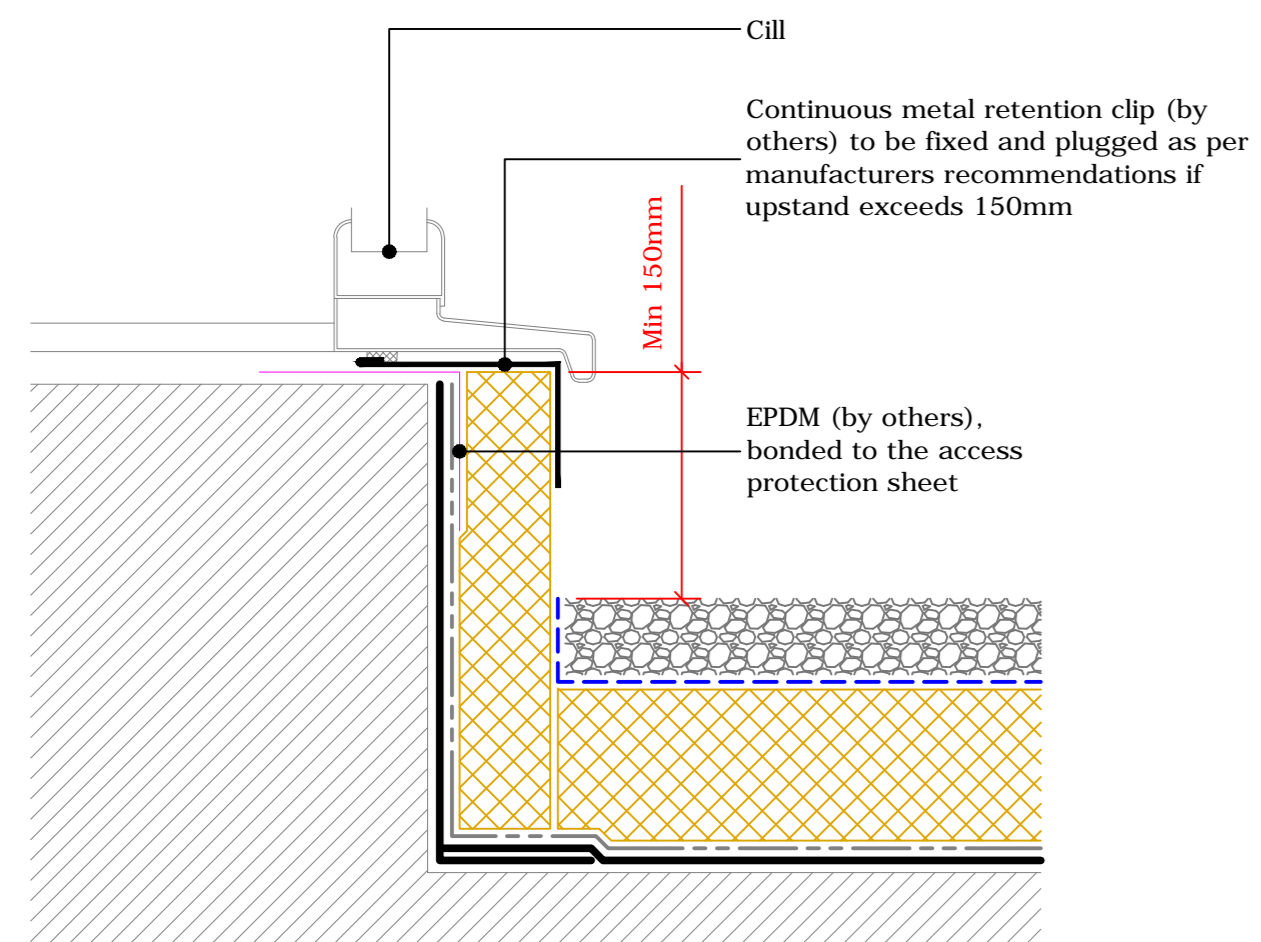
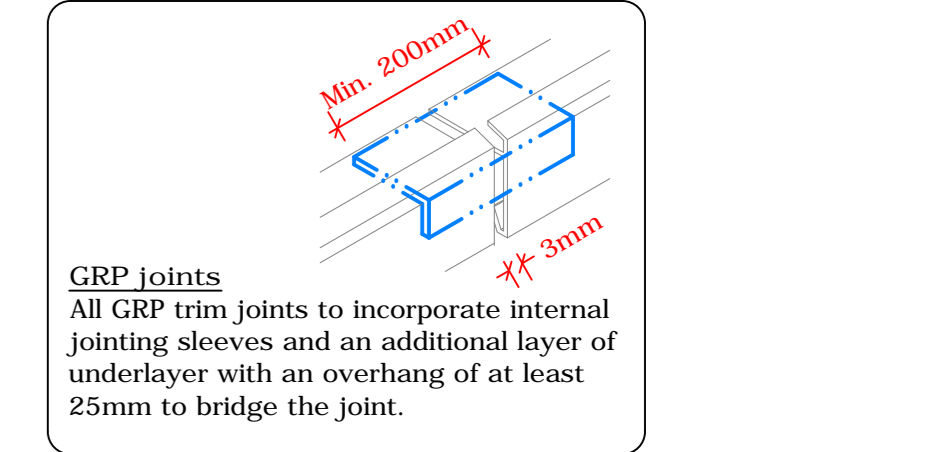
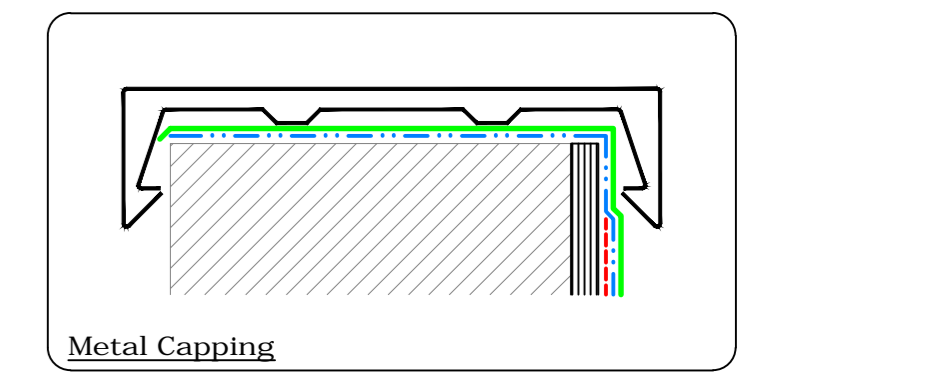
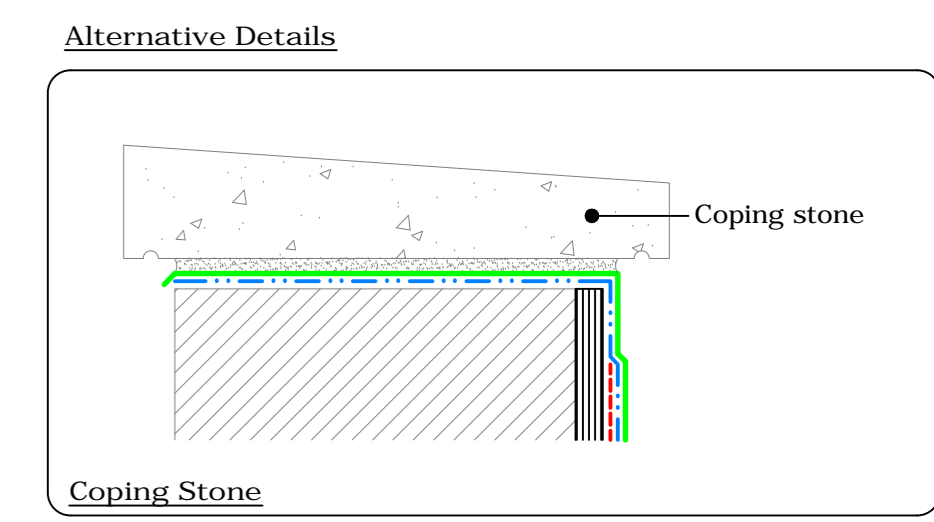
Insulated Upstands - Upstand To Vertical Cladding
(Drg.No: D0700-001_201-002)



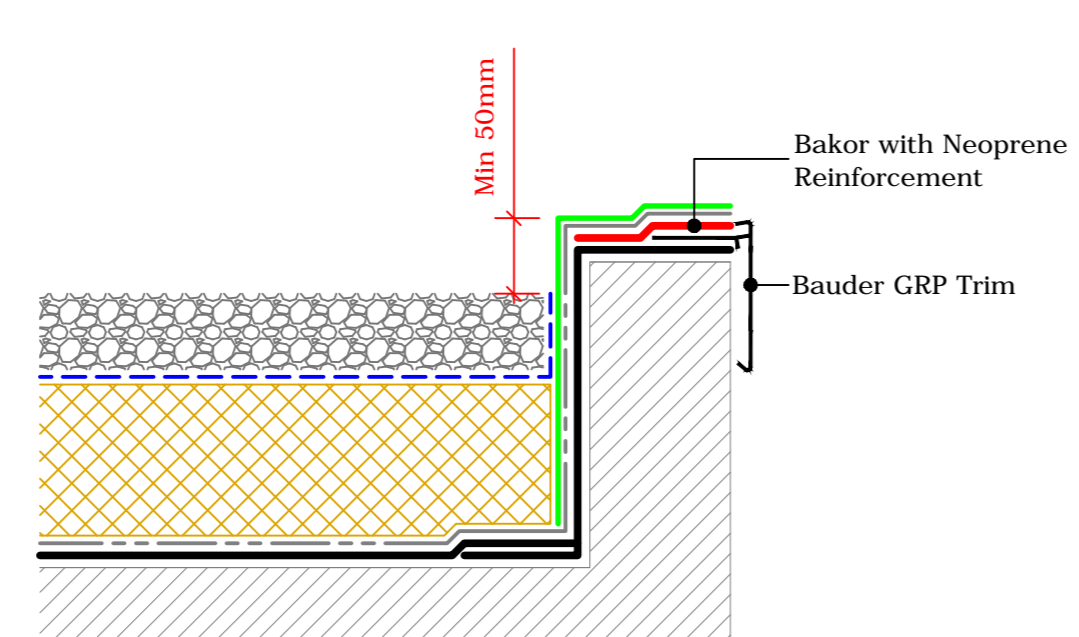
Insulated Upstands - Parapet Upstand Options
(Drg.No: D0700-001_203-001)



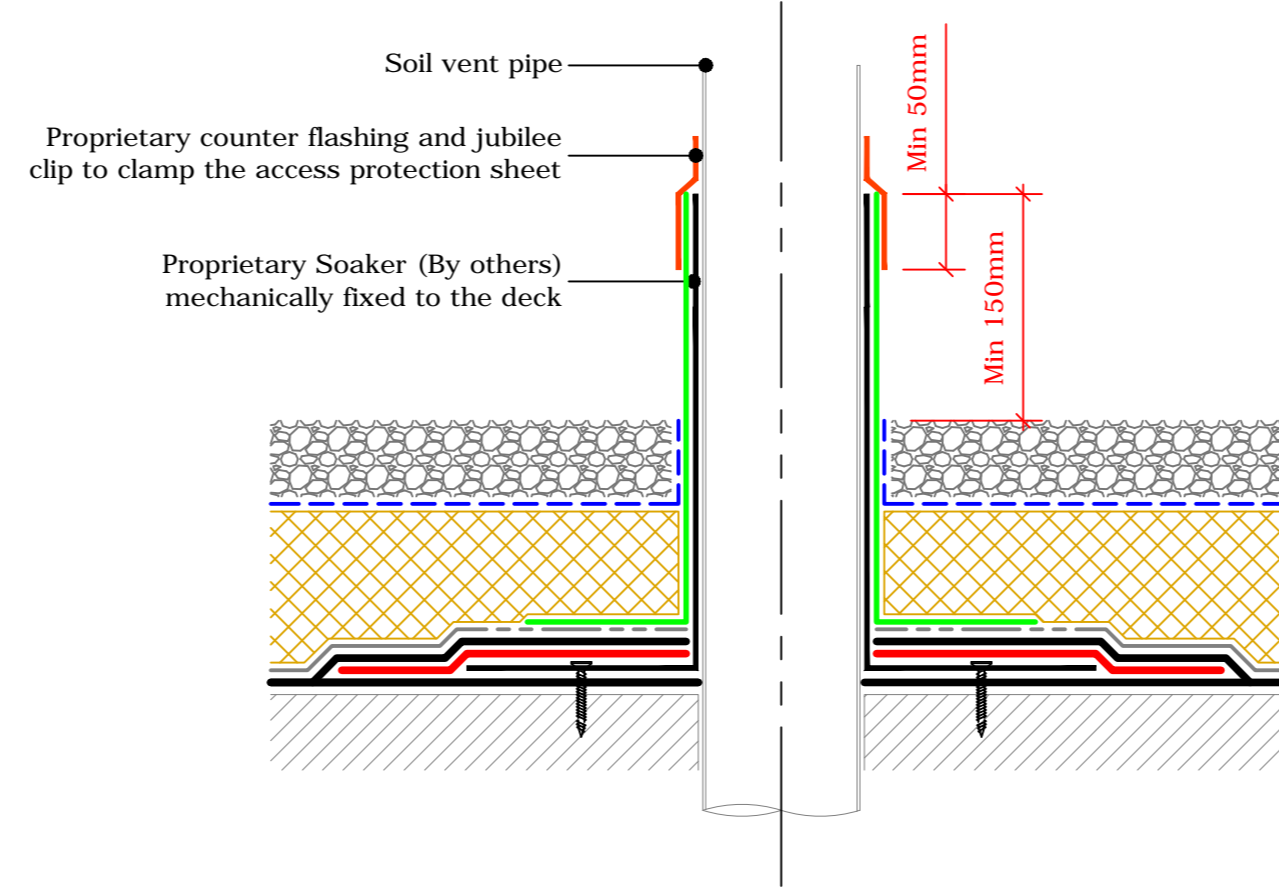
Insulated Upstands - Warm Roof Parapet Upstand - Ply Clad Options
(Drg.No: D0700-001_203-004)



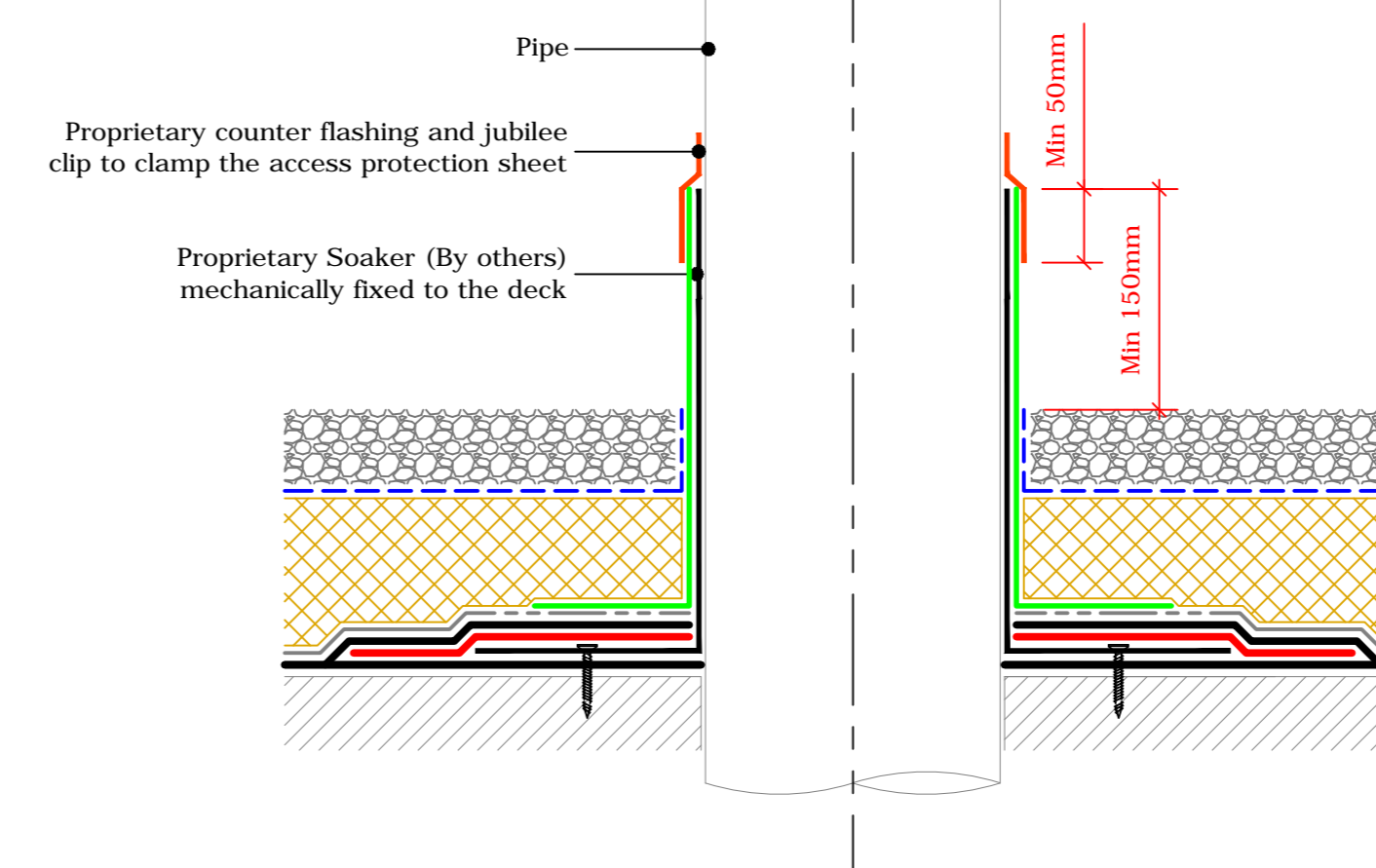
Insulated Upstands - Upstand To Raised Cills
(Drg.No: D0700-001_201-003)



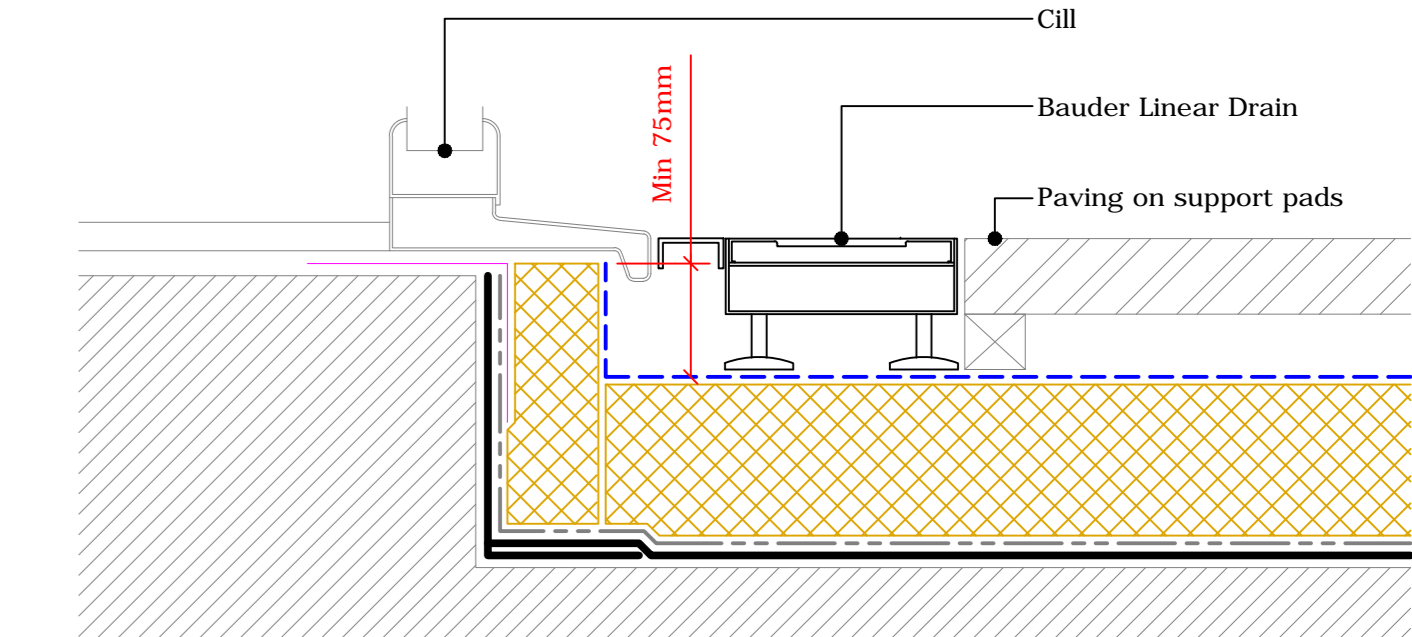
Perimeter Kerb - GRP Trim
(Drg.No: D0700-001_002-001)



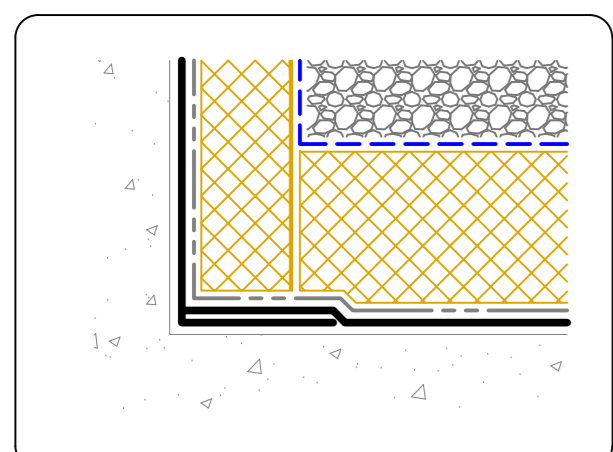
Upstand - Soil Vent Pipe
(Drg.No: D0700-001_007-001)



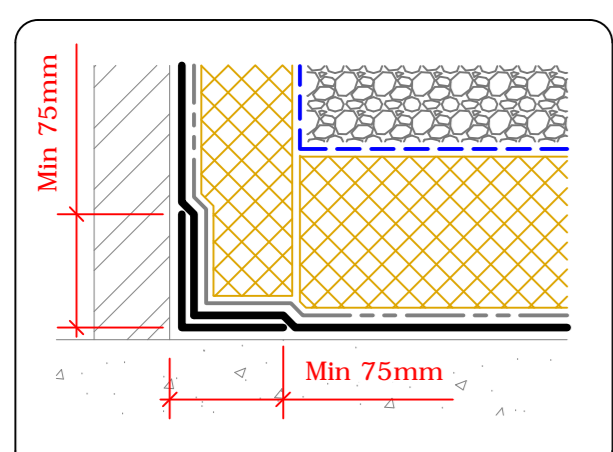
Upstand To Cold Pipe
(Drg.No: D0700-001_007-003)



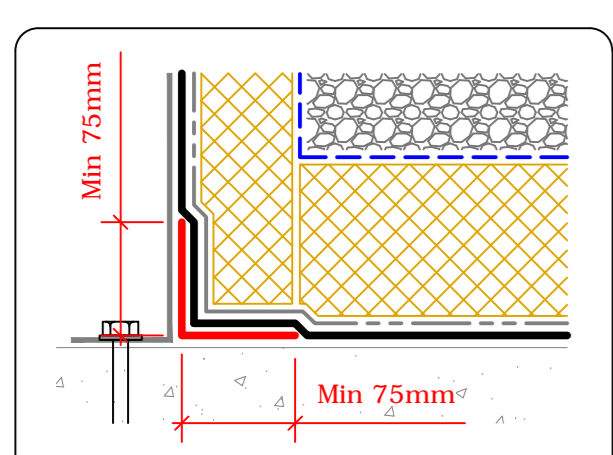
Insulated Upstands - Level Threshold
(Drg.No: D0700-001_201-004)



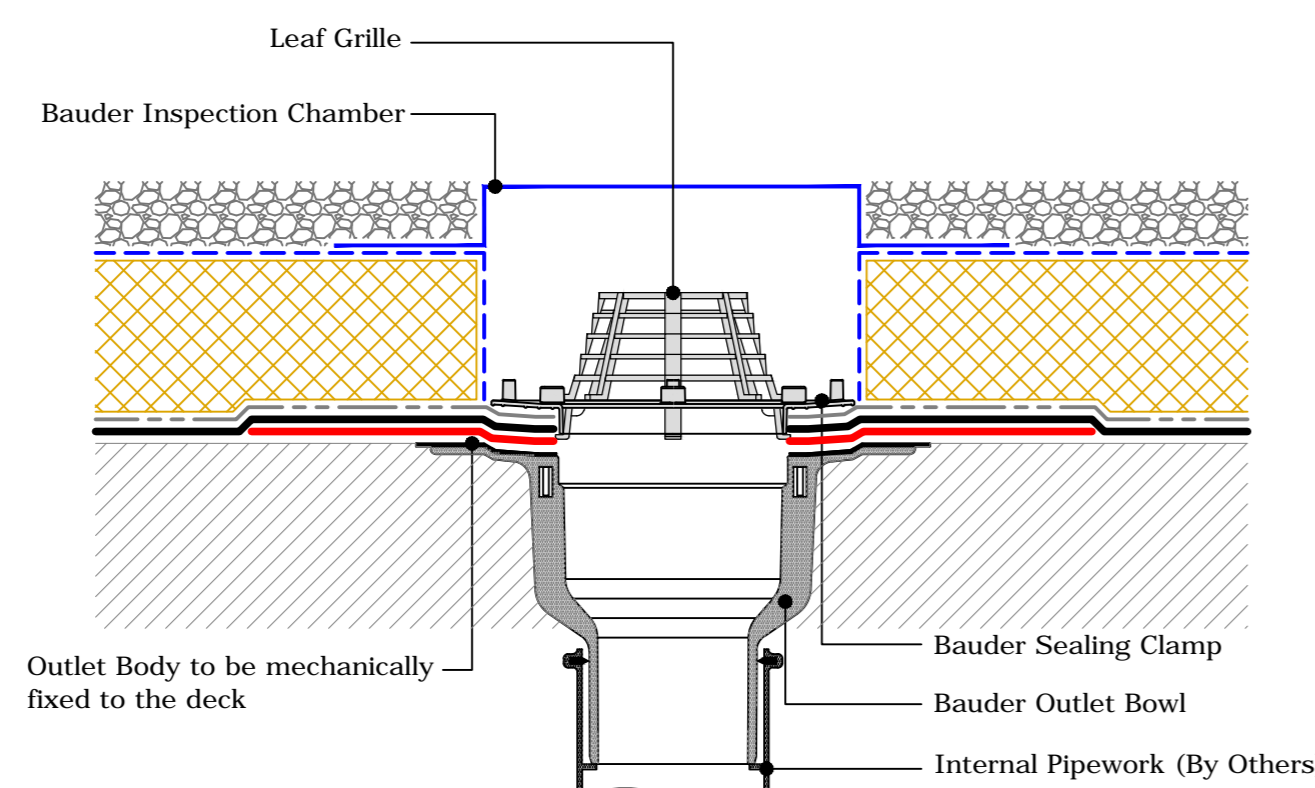
Monolithic Concrete Upstand
No Movement Expected



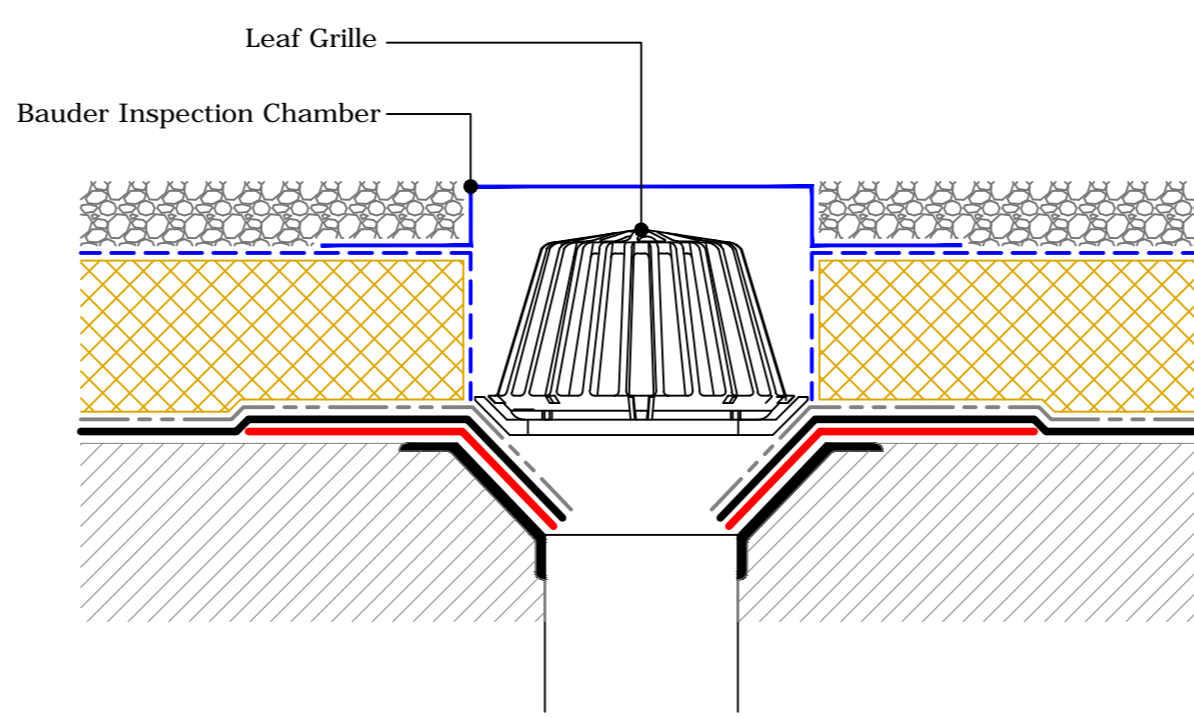
Junction Between Differing Materials
Minimal Movement Expected
(Brickwork Upstand/Concrete Deck)



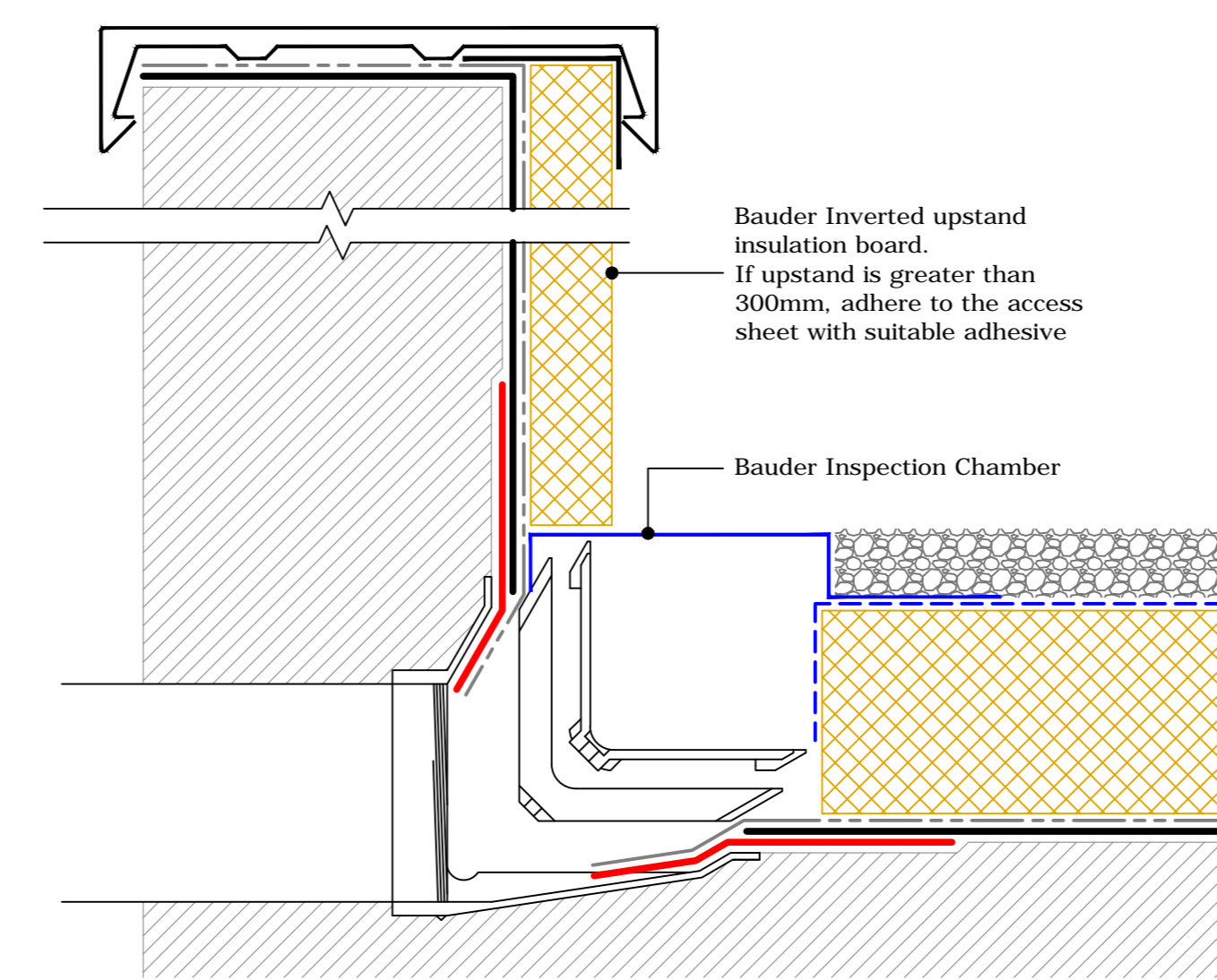
Junction Between Differing Materials
Movement Expected
(Metal/Plywood Upstands / Concrete Deck)



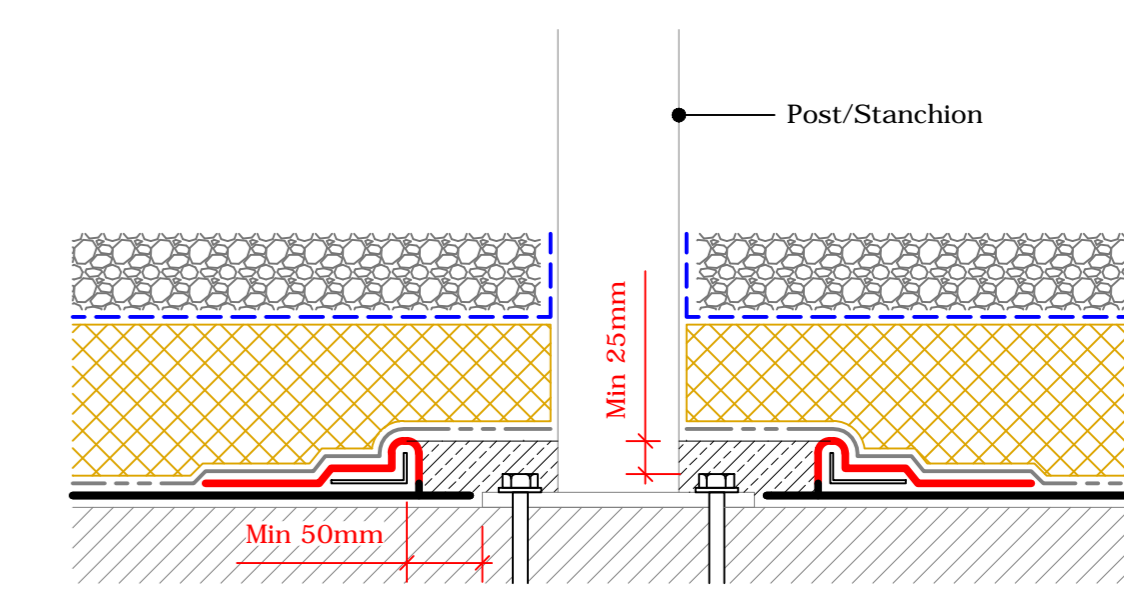
Bauder Outlet - Compact
(Drg.No: D0700-001_006-001)



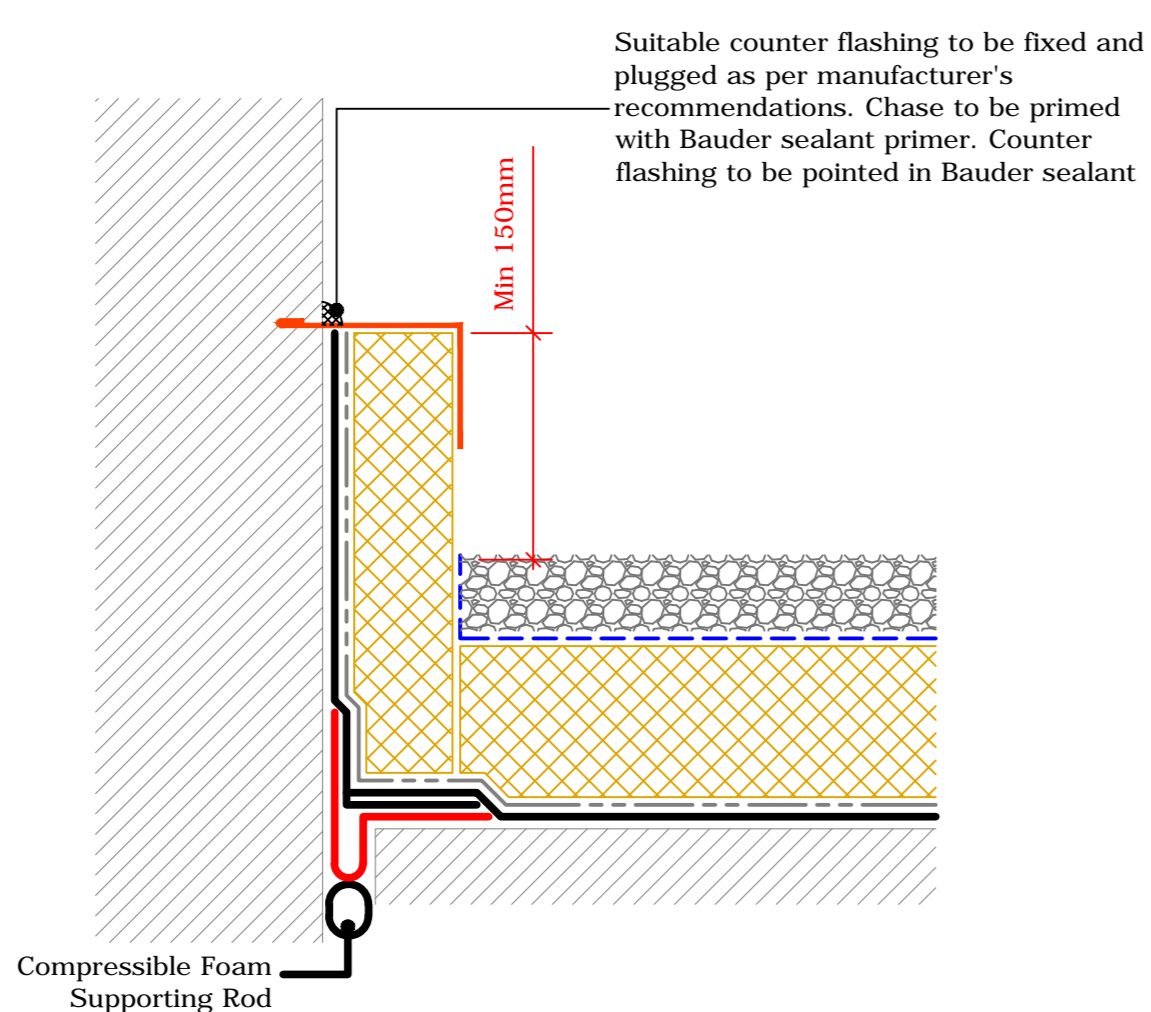
Outlet - By Others
(Drg.No: D0700-001_006-008)



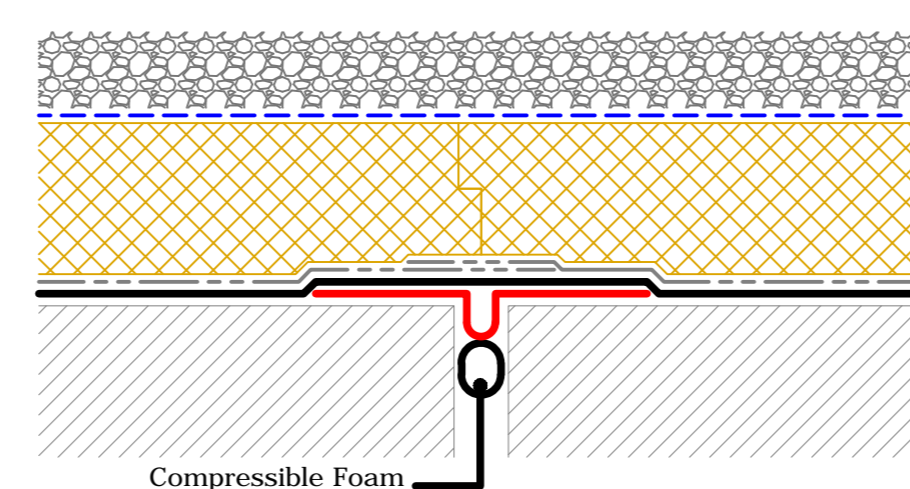
Insulated Upstand - Two-Way outlet (By others)
(Drg.No: D0700-001_206-003)



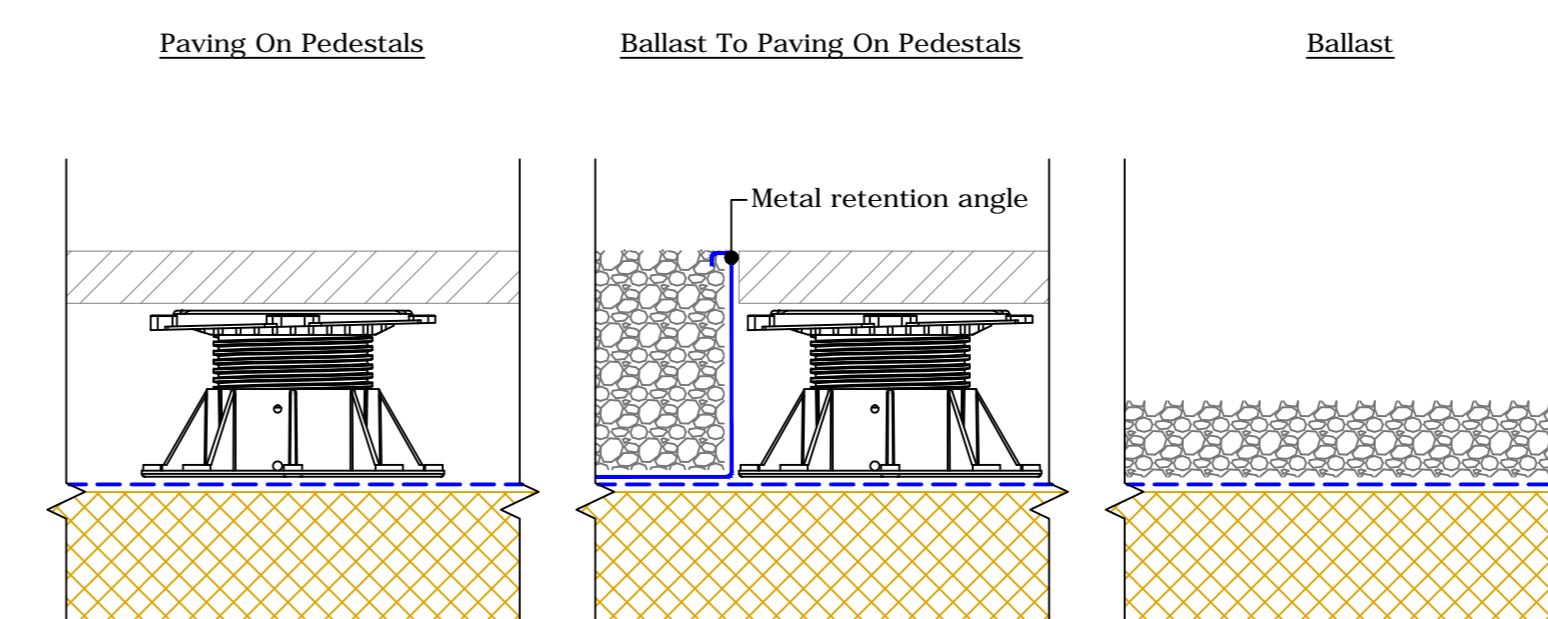
Pitch Pocket
(Drg.No: D0700-001_007-004)



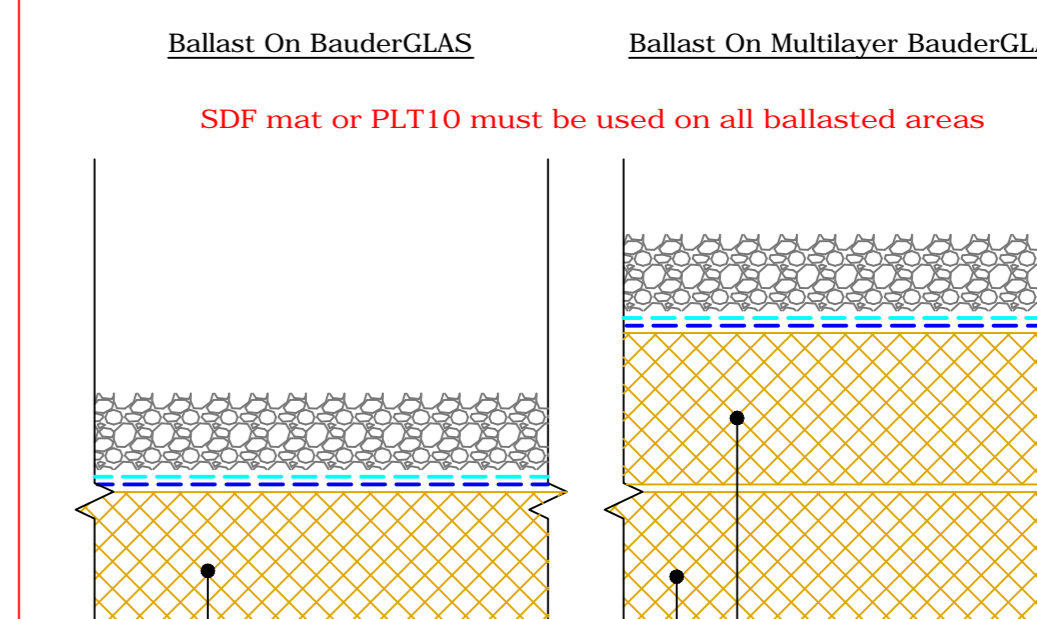
Expansion Joint - Insulated Upstand
(Drg.No: D0700-001_004-001)



Expansion Joint
(Drg.No: D0700-001_004-005)



Build-Up Options



BauderGLAS Build-Up Options

Key

- Code 4 Lead Flashing
- Bauder SDF Mat Or PLT10 Drainage Layer
- Bauder Water Flow Resistant Layer
- Bauder Inverted Insulation
- EPDM by others
- Bauder AF1 Access Sheet
- Bauder Baker Hotmelt Membrane Incorporating Polyester Reinforcement
- Bauder Baker Hotmelt Membrane Incorporating Neoprene Reinforcement
- Bauder Capping Sheet / Protection Sheet (Mineral Finish)
- Bauder Underlayer
- Bauder Insulation
- Bauder Insulation Filler
- Bauder Air And Vapour Control Layer
- Deck / Substrate

IMPORTANT NOTES:

- This detail is suitable for the following Bauder Systems: Bauder Hotmelt
- This Drawing Shows Alternative Options. For the Correct Solution to be Used, Refer to the Project Specific Specification.
- Do not scale to ascertain dimensions.
- All dimensions to be checked and verified on site prior to commencement of work.
- This drawing is to be read in conjunction with the specification and associated drawings.
- This detail is a guideline only, representing typical detailing conditions and illustrate the correct application of the above Bauder System. It may be necessary to modify this detail to suit specific project design constraints or conditions.
- Refer to the Bauder Specification for the product description and method of application. For clarity the method of attachment has not been shown.
- Provisions should be made by the installer for mechanically fixing the top leading edge of all opened details in excess of 250mm in height using appropriate fasteners.



HOTMELT TYPICAL DETAILS (Insulated Upstands) Sheet 1 of 2

Scale:	D0700-001_200-001	Rev:	C
Drawn By:	CD	Checked By:	AH
Issued By:	AH	Approved By:	AH
Date:	13.05.22	Project No:	

© Copyright. This drawing is subject to copyright. No part of this document may be reproduced in any form, without the permission of BAUDER LTD.