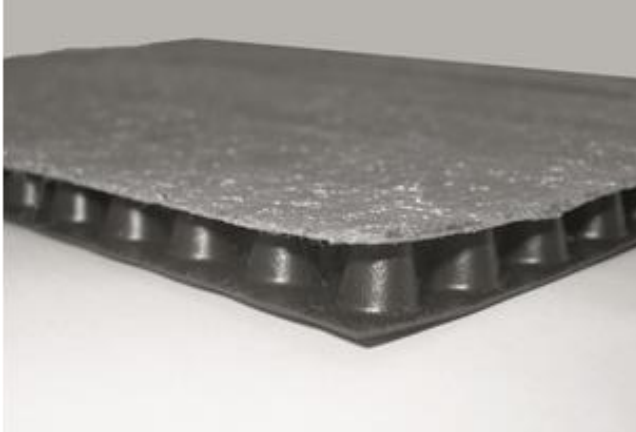


## TECHNICAL DATA SHEET

**BauderGREEN DE NF 10 drainage and protection mat**

Single Layer Multi-directional drainage and protection layer

**Intended Use**

This product provides filtration and drainage beneath hard and soft landscaping. As well as protection for the underlying waterproofing. It is highly resistant under loading. DE NF 10 provides a stable base to support walkways or platform mounted equipment without compromising the capacity for drainage.

<b>PRODUCT INFORMATION AND TECHNICAL PERFORMANCE</b>			
<b>Characteristic</b>	<b>Test method</b>	<b>Unit</b>	<b>Value</b>
Weight	EN 1848-1	kg/m <sup>2</sup>	0.75
Compressive Strength		KN/m <sup>2</sup>	≥ 400
Water Storage		Ltr/m <sup>2</sup>	9
Drainage Capacity: Lateral drainage	1:50 fall	Ltr/sec/m <sup>2</sup>	0.55
	1:33 fall	Ltr/sec/m <sup>2</sup>	0.67
Thickness		mm	10
Size (supplied in rolls)		m	2 x 12.5
Coverage		m <sup>2</sup>	25
Material	High density polyethylene with geo-textile fleece bonded to the crowns.		

<b>CERTIFICATION AND ENVIRONMENTAL INFORMATION</b>	
International Standards Organisation (ISO)	ISO 9001:2015 Quality Management Certificates EN1271 (UK) and 70499/03-15_e (Germany).  ISO 14001:2015 Environmental Management Certificates A10552 (UK) and 70499/03-15_d (Germany).  ISO 50001: 2011 Energy Management Certificate 70499/03-15_c (Germany)
Recycled content	Made from 100% recycled high density polyethylene

<b>INSTALLATION GUIDANCE</b>
Normally DE NF 10 is installed with the crowns up and is laid over the entire area, The rolls of DE NF 10 can be joined by peeling back the fleece and interlocking the crowns. Must be kept back from all drainage outlets. See Bauder's Green Roof Installation Guide for full details.

Bauder reserves the right to amend information and product specifications without prior notice. All reasonable care has been taken to ensure that all data is current at the time of print, however because Bauder pursues a policy of constant development we recommend ensuring that your copy of this information is current by contacting our Technical Department at [technical@bauder.co.uk](mailto:technical@bauder.co.uk)

Recommendations for use should be verified as to the suitability and compliance with actual requirements, specifications, installation techniques and any applicable laws and regulations.

**UNITED KINGDOM**

Bauder Ltd  
 70 Landseer Road, Ipswich, Suffolk IP3 0DH  
 T: +44 (0)1473 257671 E: [info@bauder.co.uk](mailto:info@bauder.co.uk) W: [bauder.co.uk](http://bauder.co.uk)

**IRELAND**

Bauder Ltd  
 O'Duffy Centre, Carrickmacross, Co. Monaghan  
 T: +353 (0)42 9692 333 E: [info@bauder.ie](mailto:info@bauder.ie) W: [bauder.ie](http://bauder.ie)