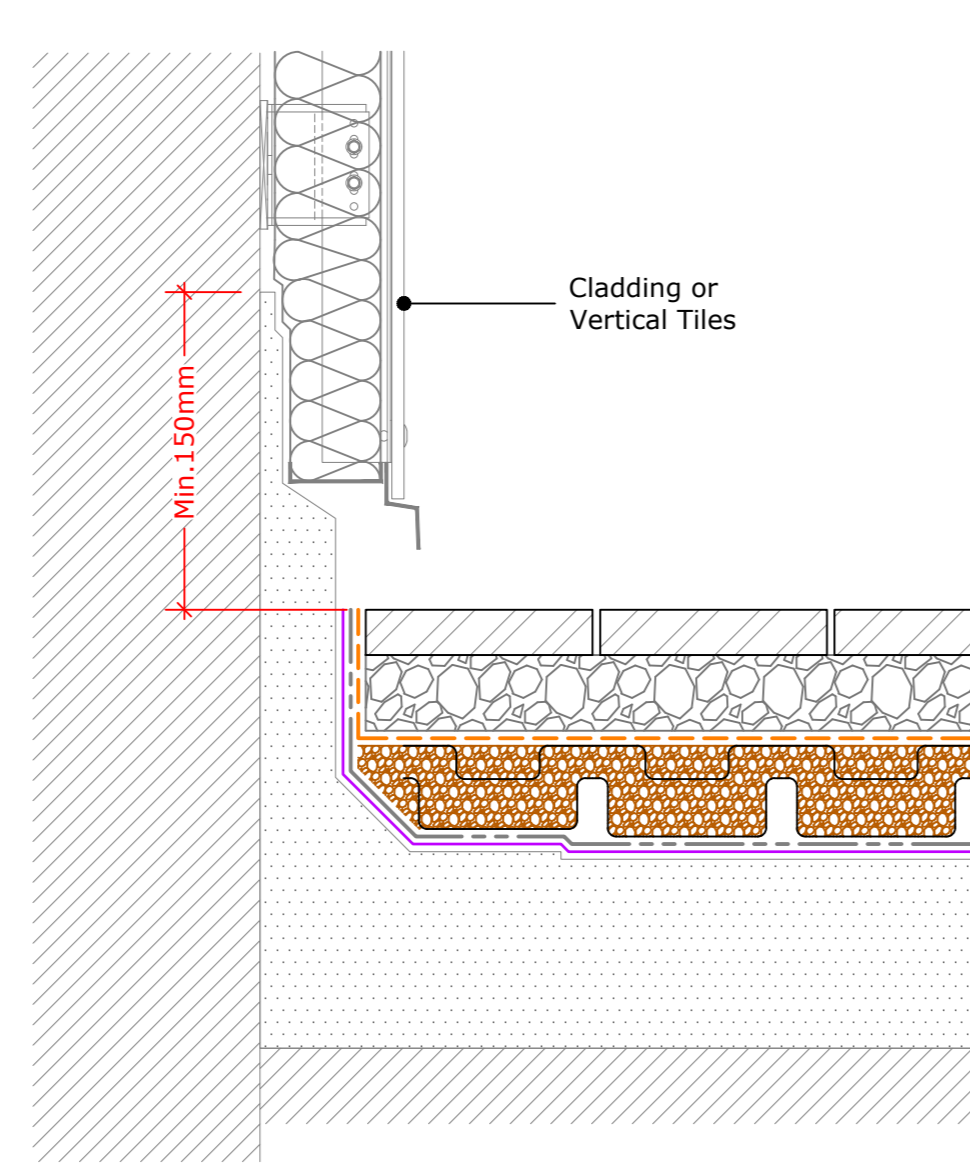
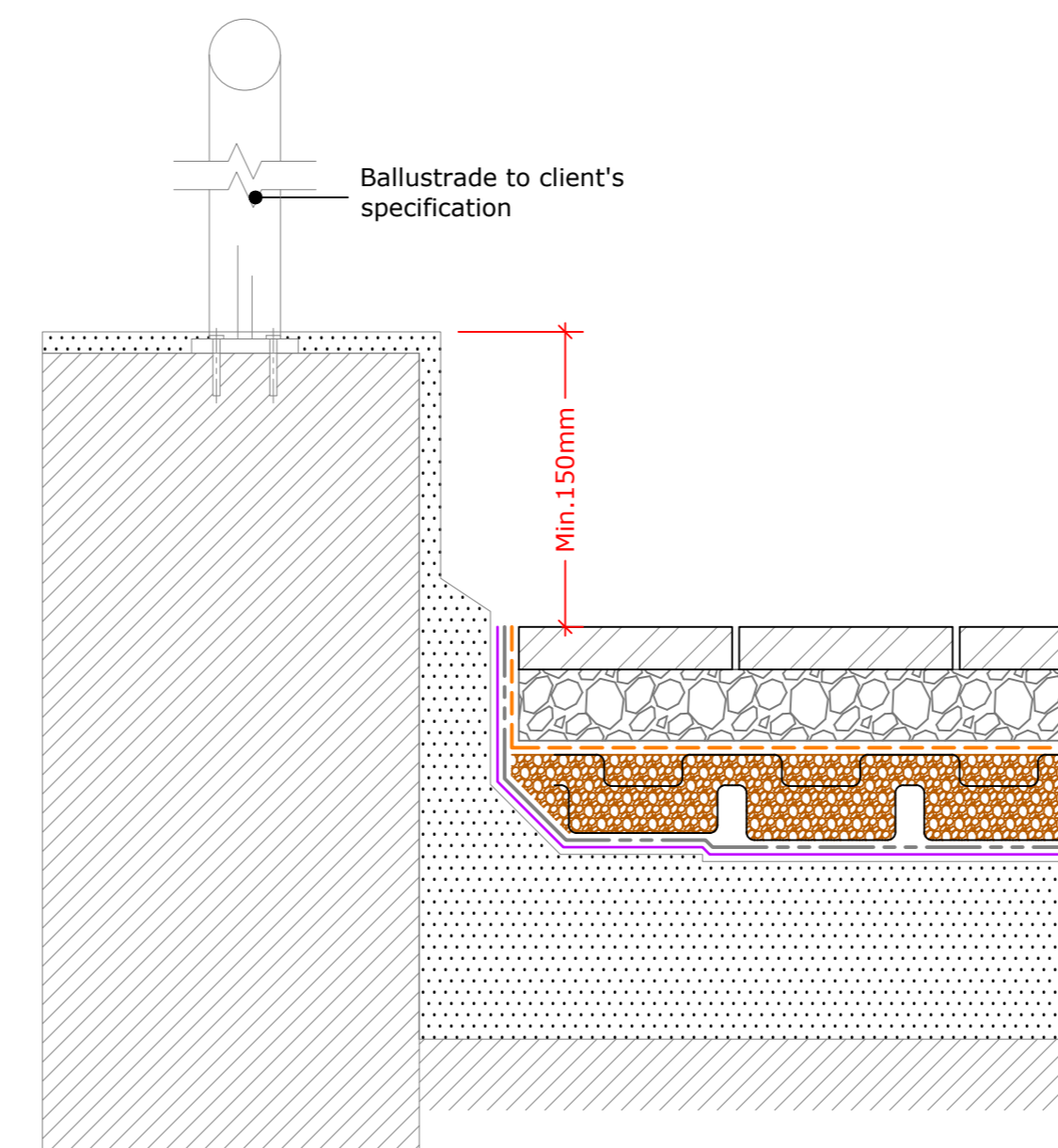


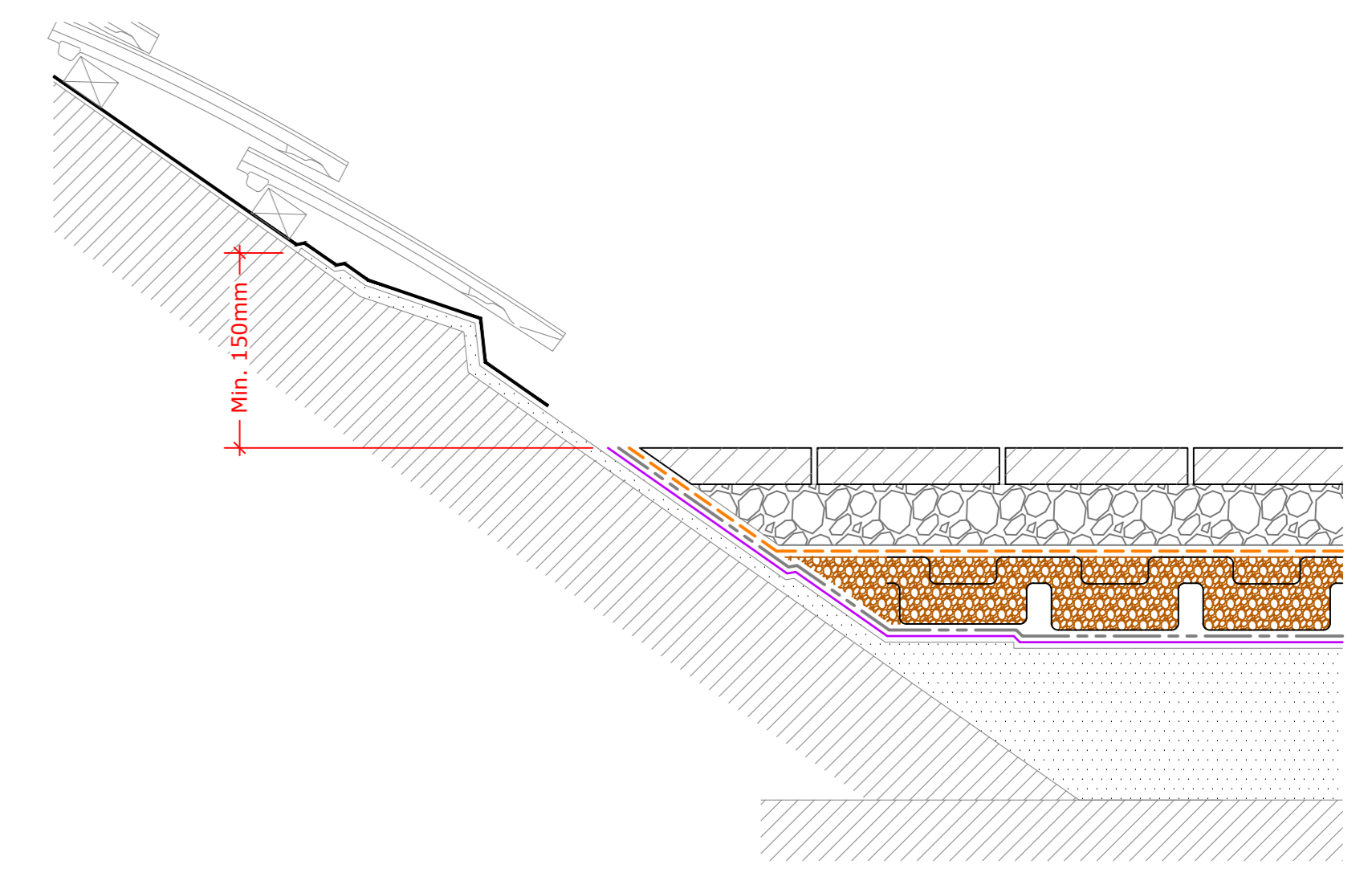
Permeable Paving to Upstand
(Drg.No: D0901-00W_201-Int-PP-D6_001)



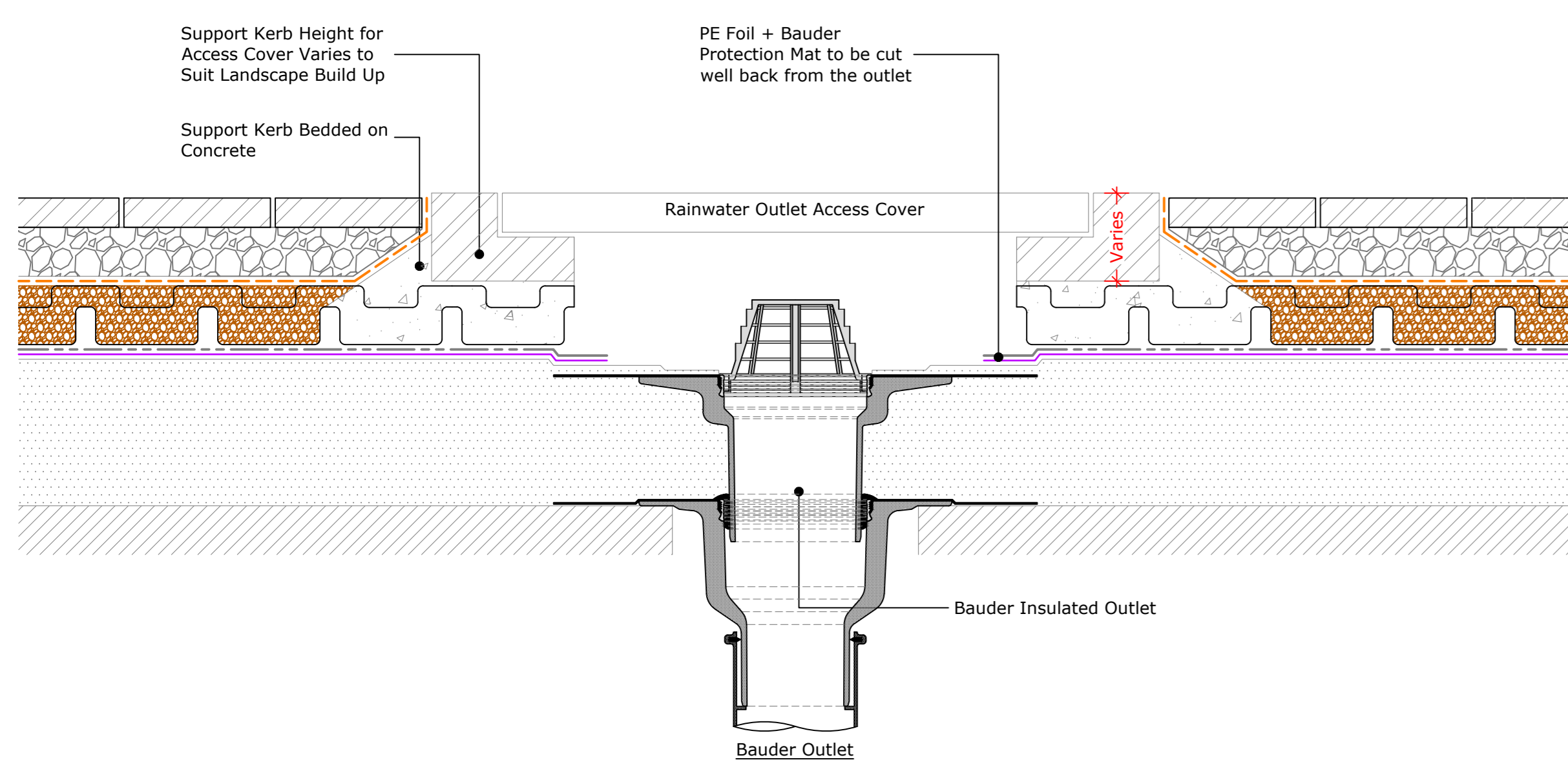
Permeable Paving to Vertical Cladding or Slates/Tiles
(Drg.No: D0901-00W_201-Int-PP-D6_002)



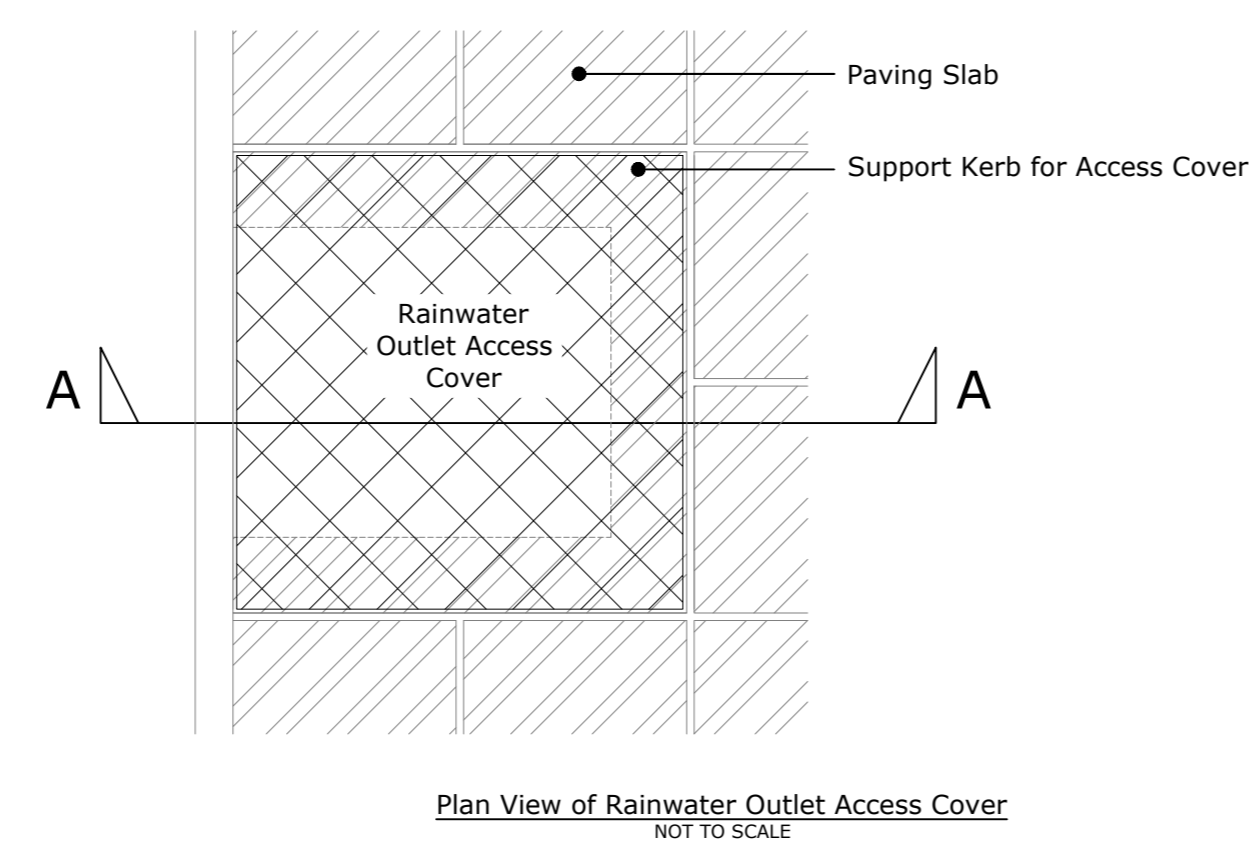
Permeable Paving to Parapet Upstand
(Drg.No: D0901-00W_203-Int-PP-D6_001)



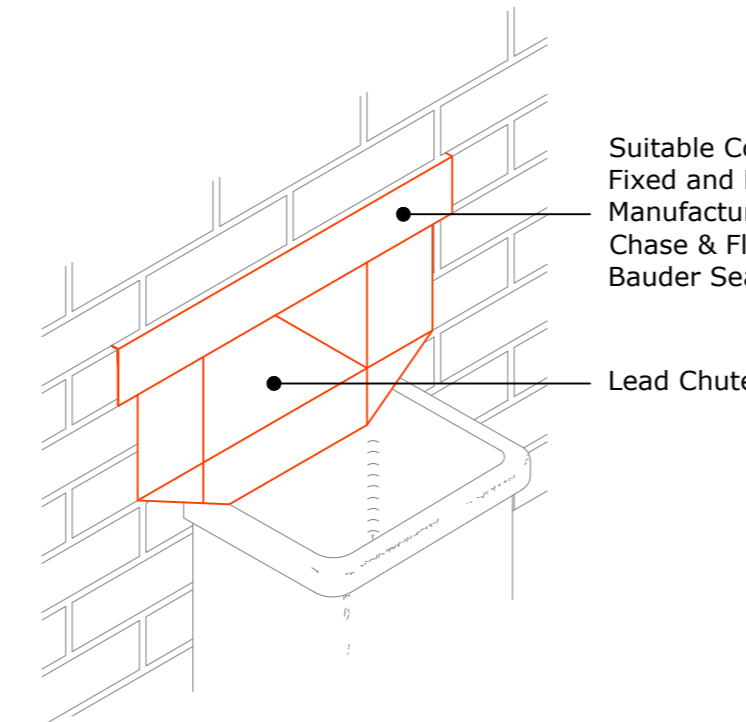
Permeable Paving to Pitched Roof
(Drg.No: D0901-00W_001-Int-PP-D6_004)



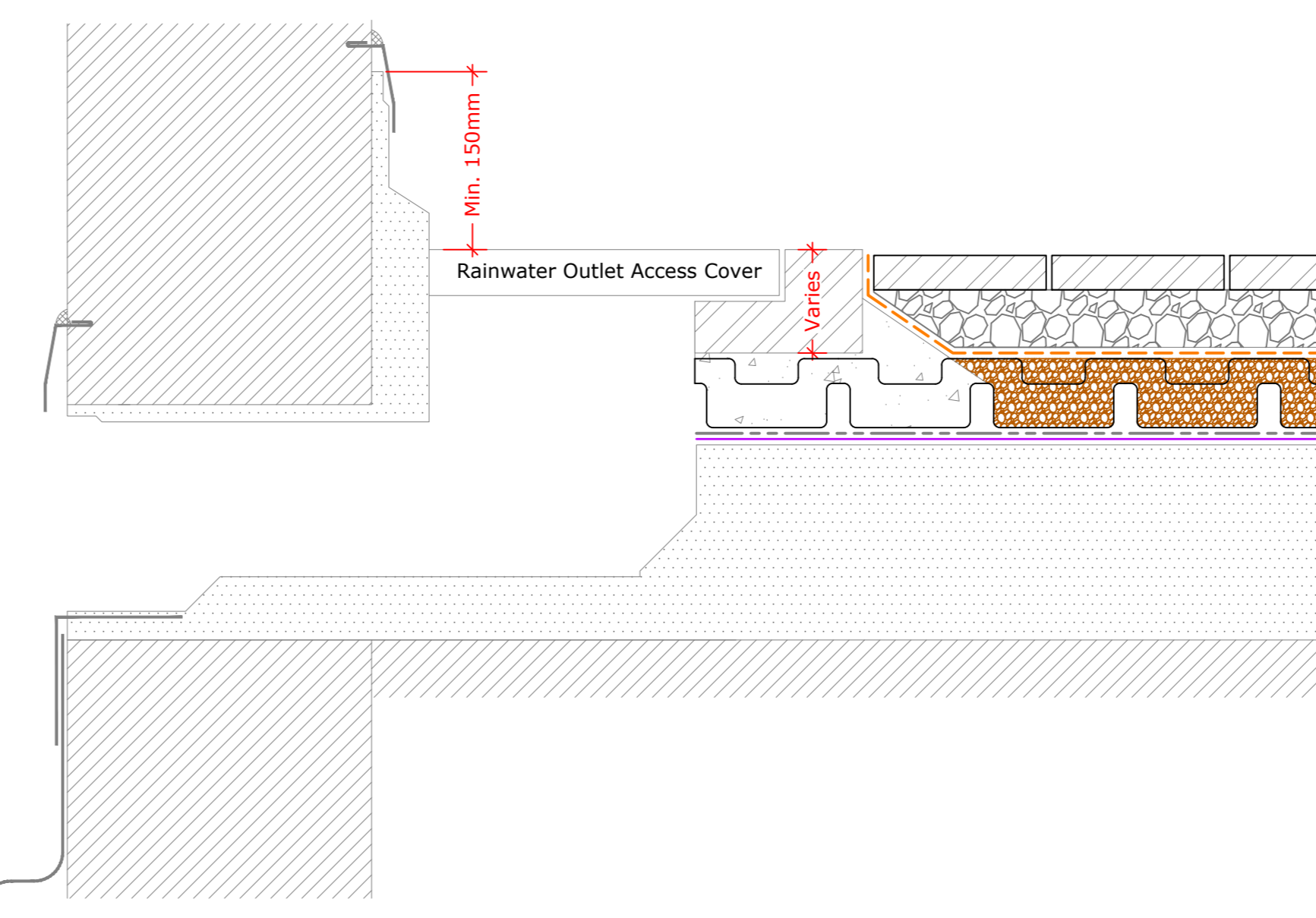
Permeable Paving to Bauder Outlet - Compact
(Drg.No: D0901-00W_006-Int-PP-D6_001)



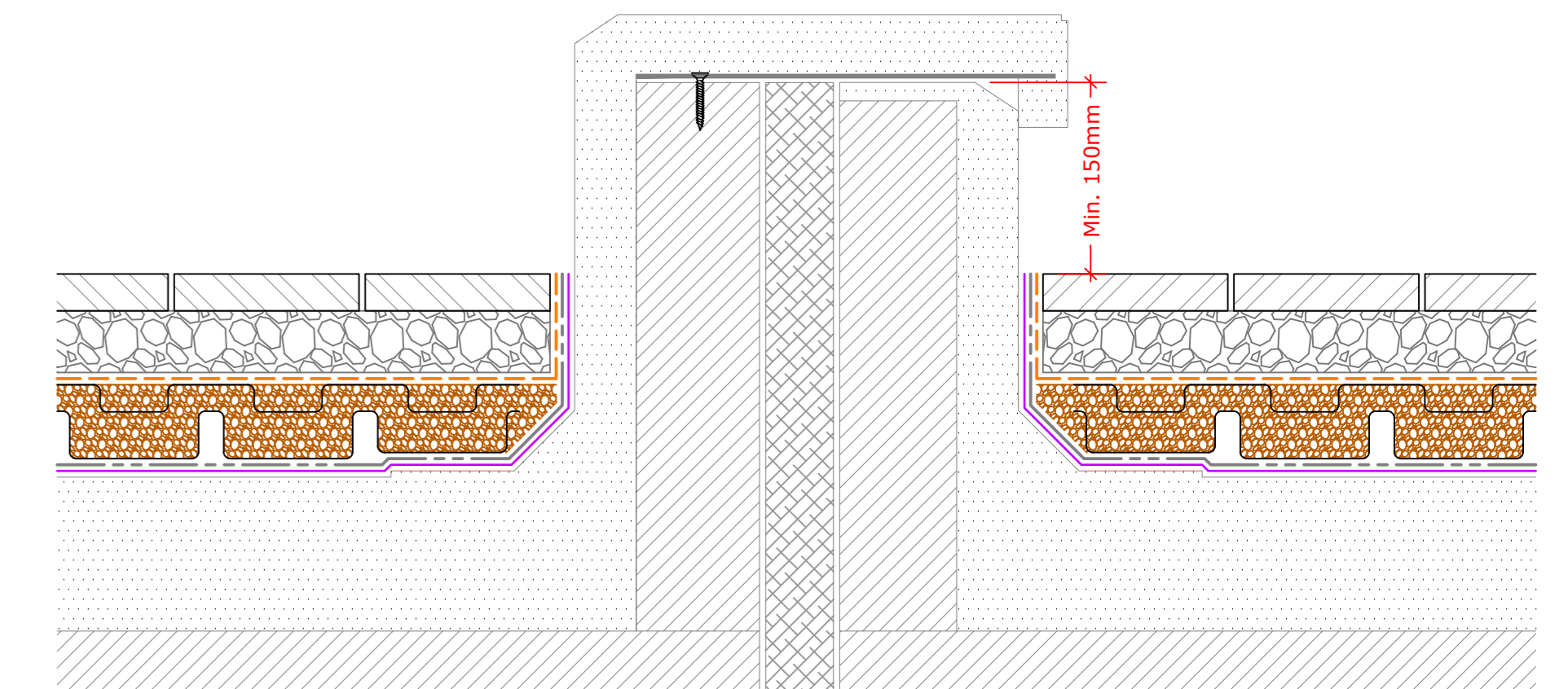
Plan View of Rainwater Outlet Access Cover
NOT TO SCALE



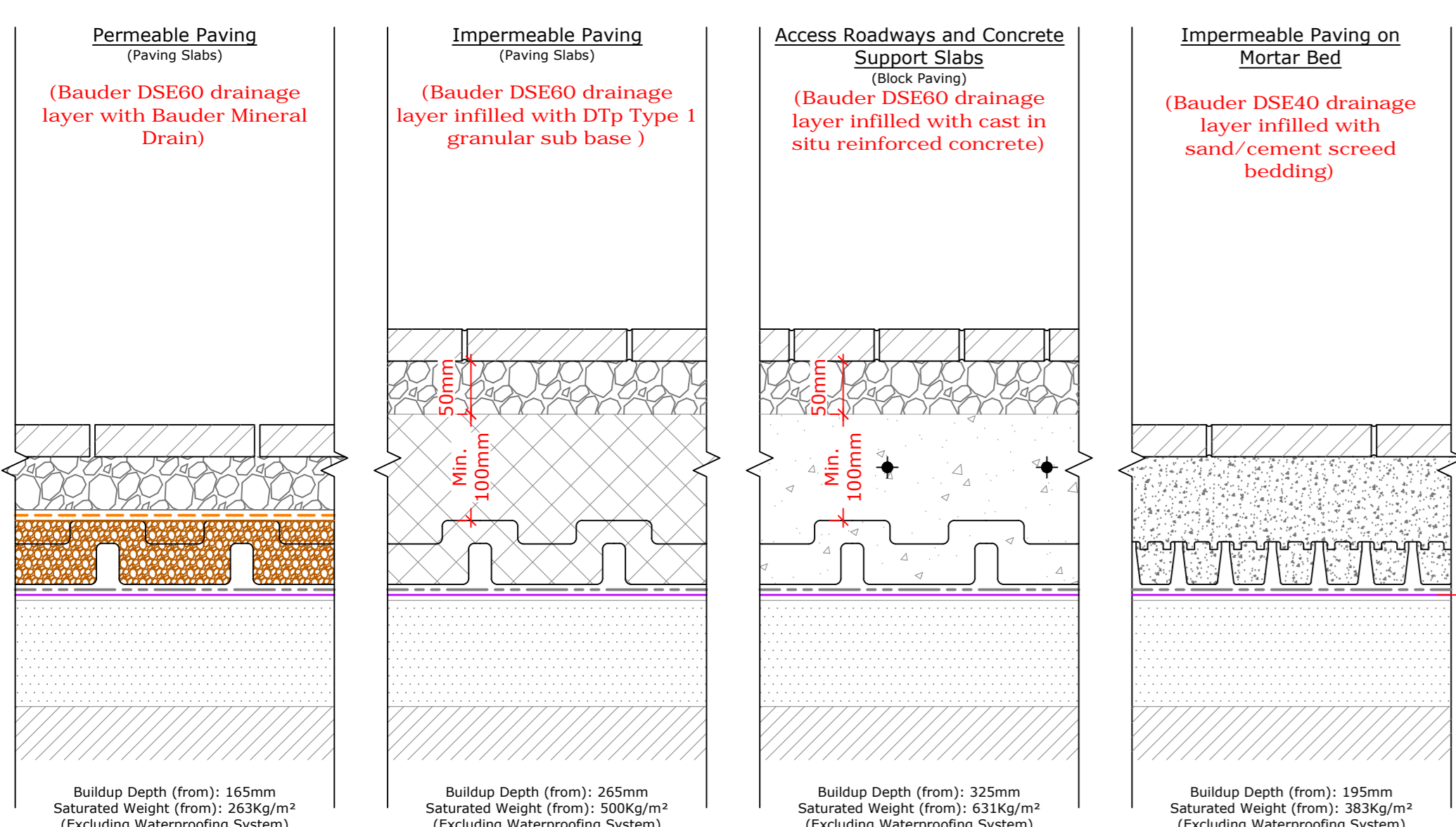
Isometric View of the Lead Chute Detail
(As Seen from the Support) NOT TO SCALE



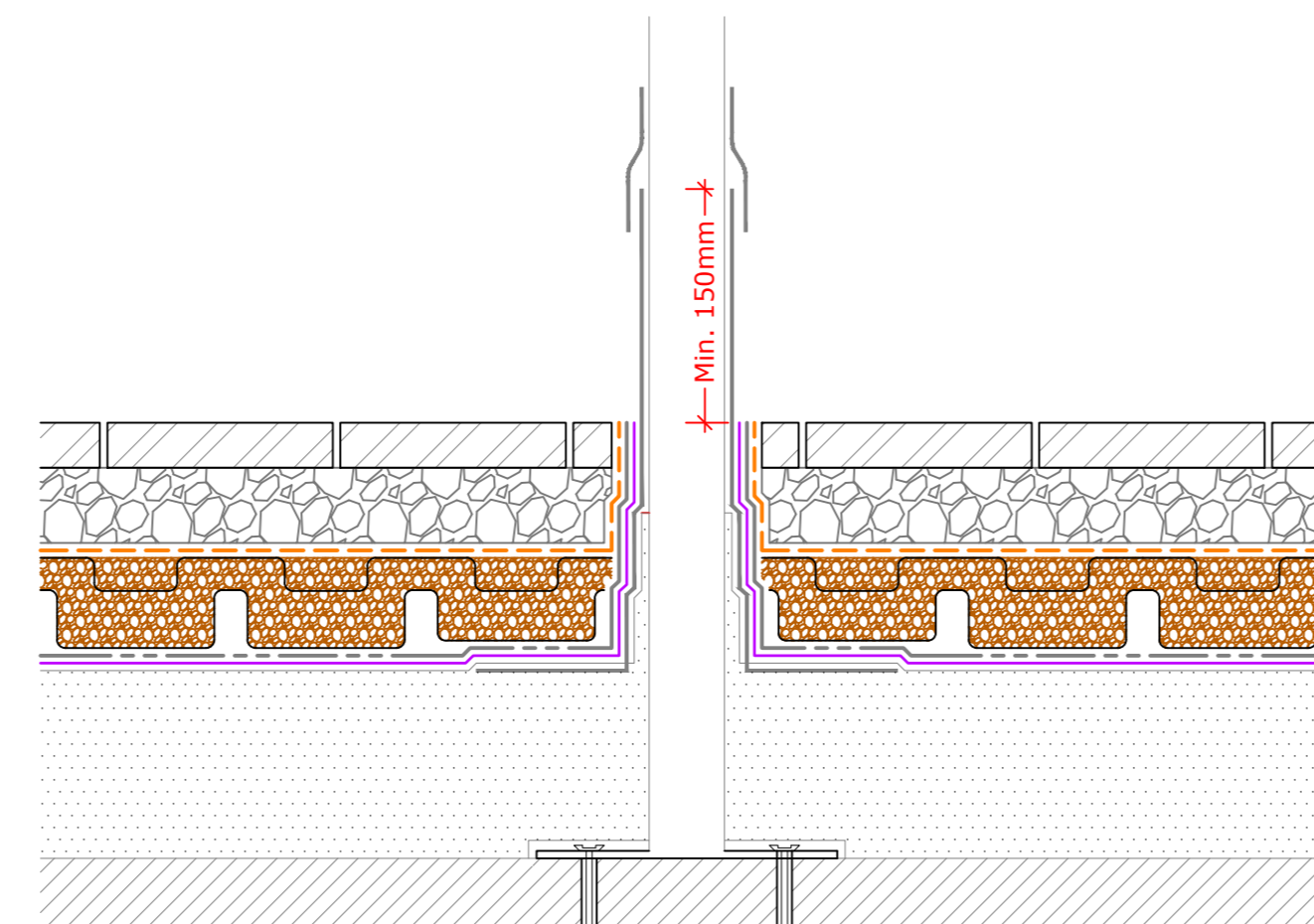
Permeable Paving to Upstand - Lead Chute (Section A-A)
(Drg.No: D0901-00W_206-Int-PP-D6_002)



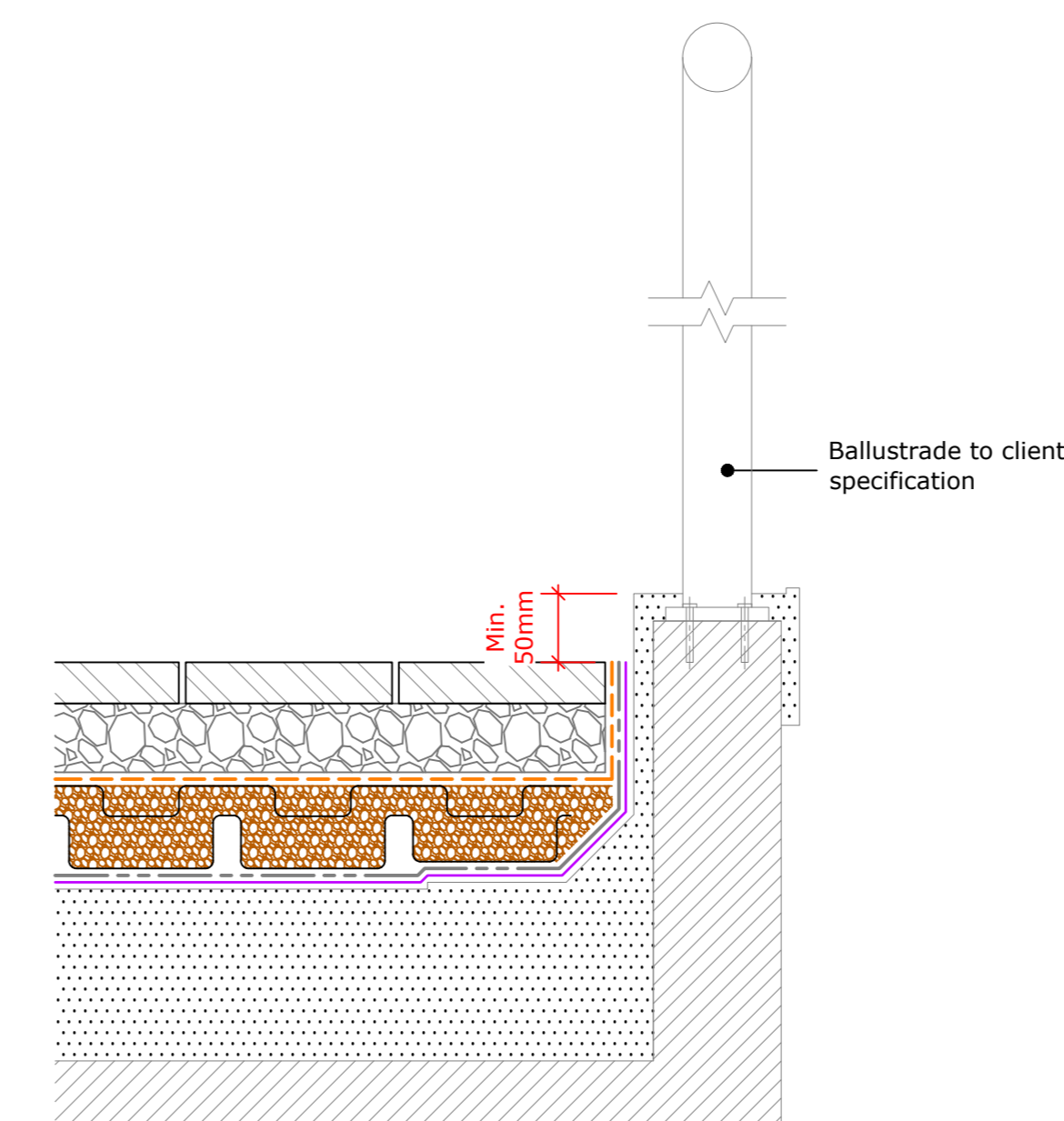
Permeable Paving to Twin Kerb Expansion Joint
(Drg.No: D0901-00W_204-Int-PP-D6_001)



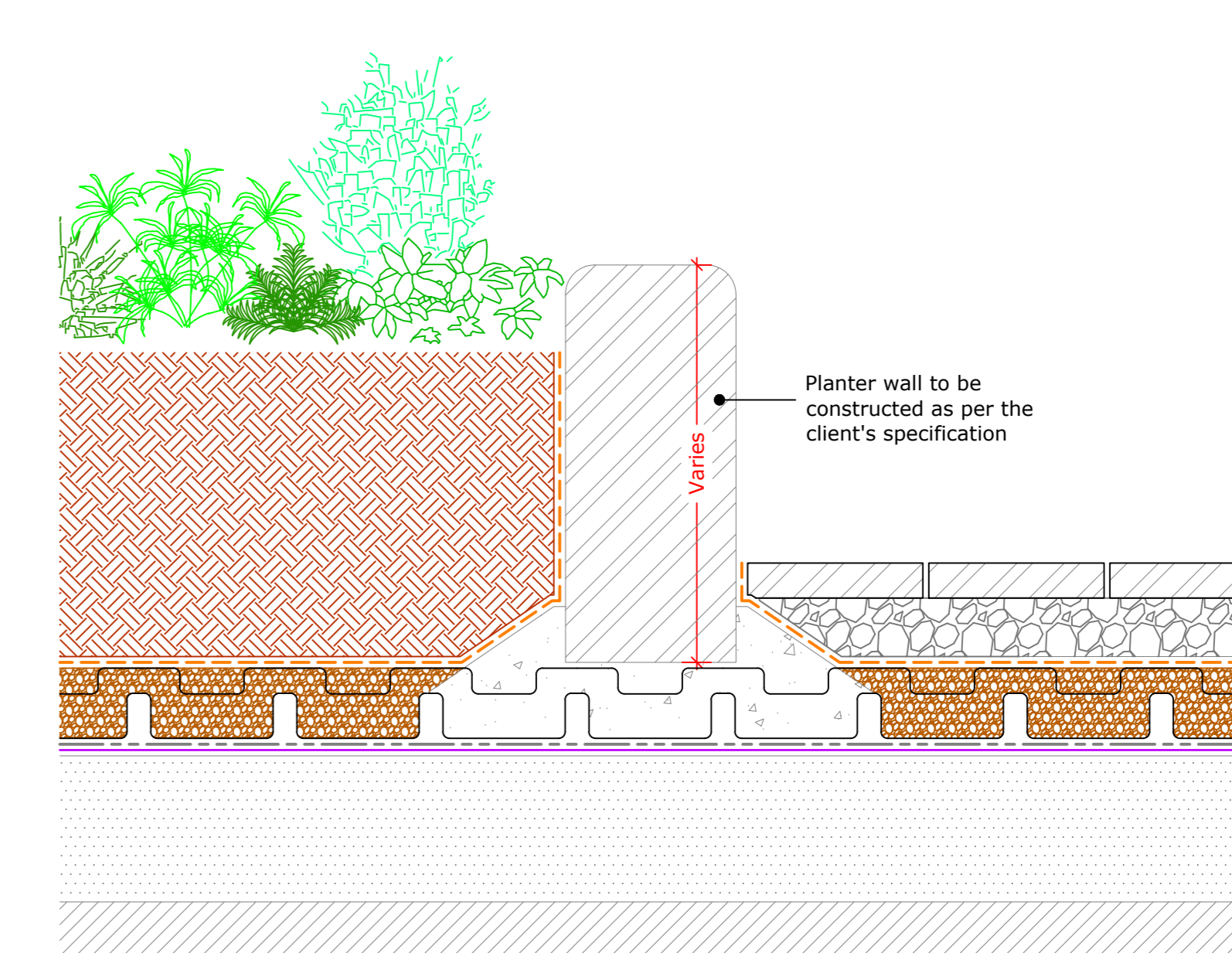
Hard Landscaping Options
(Heights and Weight loadings may vary, allowance must be made for increased landscaping depths)



Permeable Paving to Hand Rail
(Drg.No: D0901-00W_009-Int-PP-D6_002)



Permeable Paving to Perimeter Kerb
(Drg.No: D0901-00W_002-Int-PP-D6_001)



Upstand to Low Planter Wall and Permeable Paving
(Drg.No: D0901-00W_010-Int-PP-D6_005)

Key	
	Concrete Slab / Support Kerb
	2-5mm Crushed Gravel
	Bauder Filter Fleece
	DSE60 Drainage Board
	Bauder Mineral Drain
	DTp Type 1 Granular Sub Base (Compacted Aggregate)
	Bauder Protection Mat
	Bauder PE Foil (2 Layers)
	Bauder Waterproofing System
	Deck / Substrate

Important note:
This drawing shows alternative options. For the correct solution to be used, refer to the project specific specification.

- IMPORTANT NOTES:**
- This detail is suitable for the following Bauder System: Bauder Total Roof System, Bauder Total Green Roof System (BauderFlex, BauderFlex Green).
 - This drawing shows alternative options. For the correct solution to be used, refer to the Project Specific Specification.
 - Do not scale to ascertain dimensions.
 - All dimensions to be checked and verified on site prior to commencement of work.
 - This drawing is to be read in conjunction with the specification and associated drawings.
 - This detail is a guideline only, representing typical detailing conditions and illustrates the correct application of the above Bauder System. It may be necessary to modify this detail to suit specific project design constraints and application. For clarity the method of attachment has not been shown.
 - Refer to the Bauder Specification for the product description and method of application.
 - Provision should be made by the installer for mechanically fixing the top.

Rev	Date	Description	Drawn By

BAUDER

UK OFFICE: Bauder Limited, 70 Lansdown Road, Ipswich, Suffolk, IP1 3DN, UK. Tel: +44 (0)1473 257671. Fax: +44 (0)1473 230761. Email: technical@bauder.co.uk

IRELAND OFFICE: Bauder Limited, O'Duffy Centre, Cross Lane, Carrismacross, Co. Monaghan, Ireland. Tel: +353 (0)42 9692 333. Fax: +353 (0)42 9692 879. Email: technical@bauder.ie

Scale	Drawing Number	Date
1:5	D0903-00W_000-Int-HL-D6_001	Aug 2017

Hard Landscaping - Paving

Prep	Checked	Approved	Date