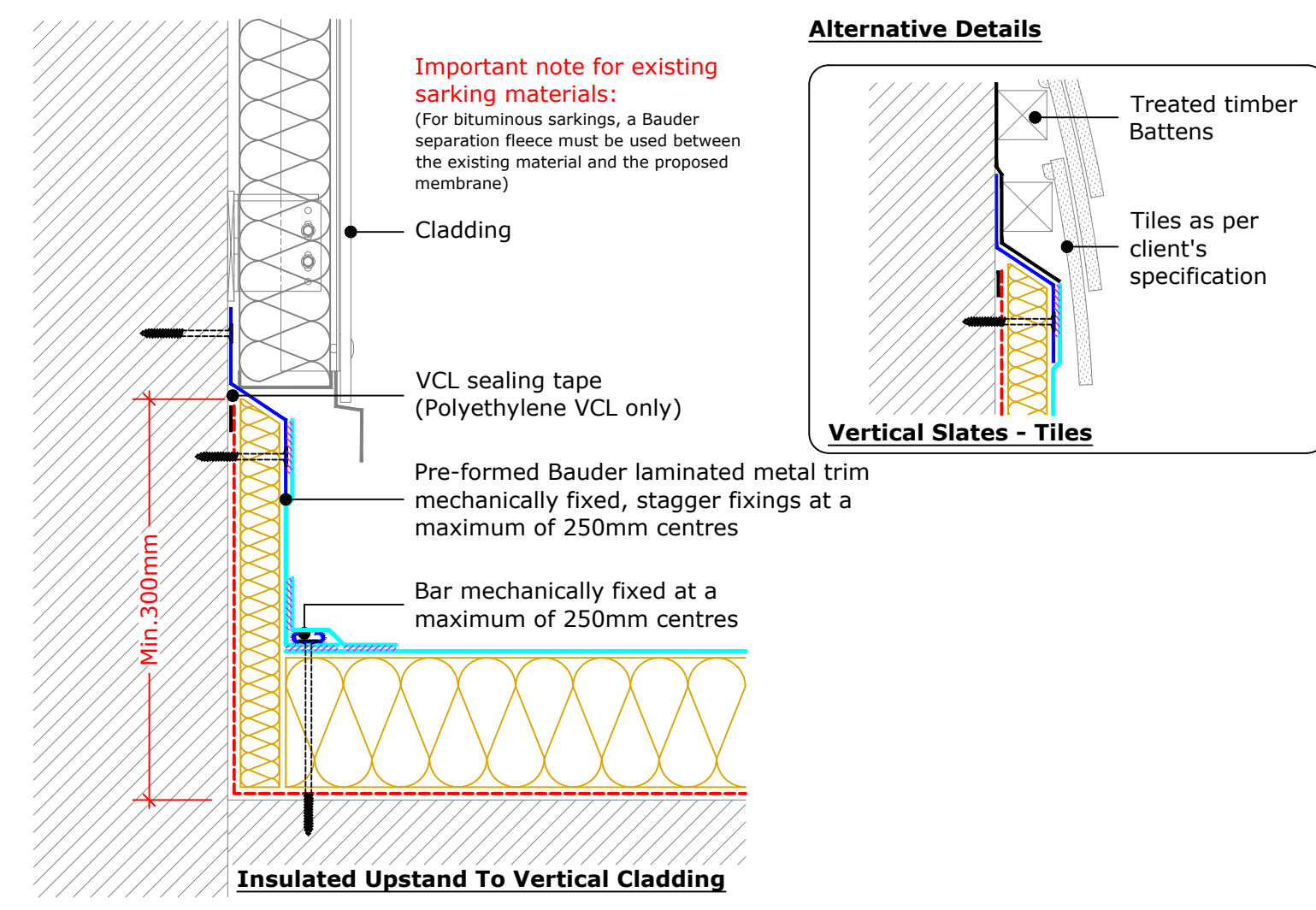
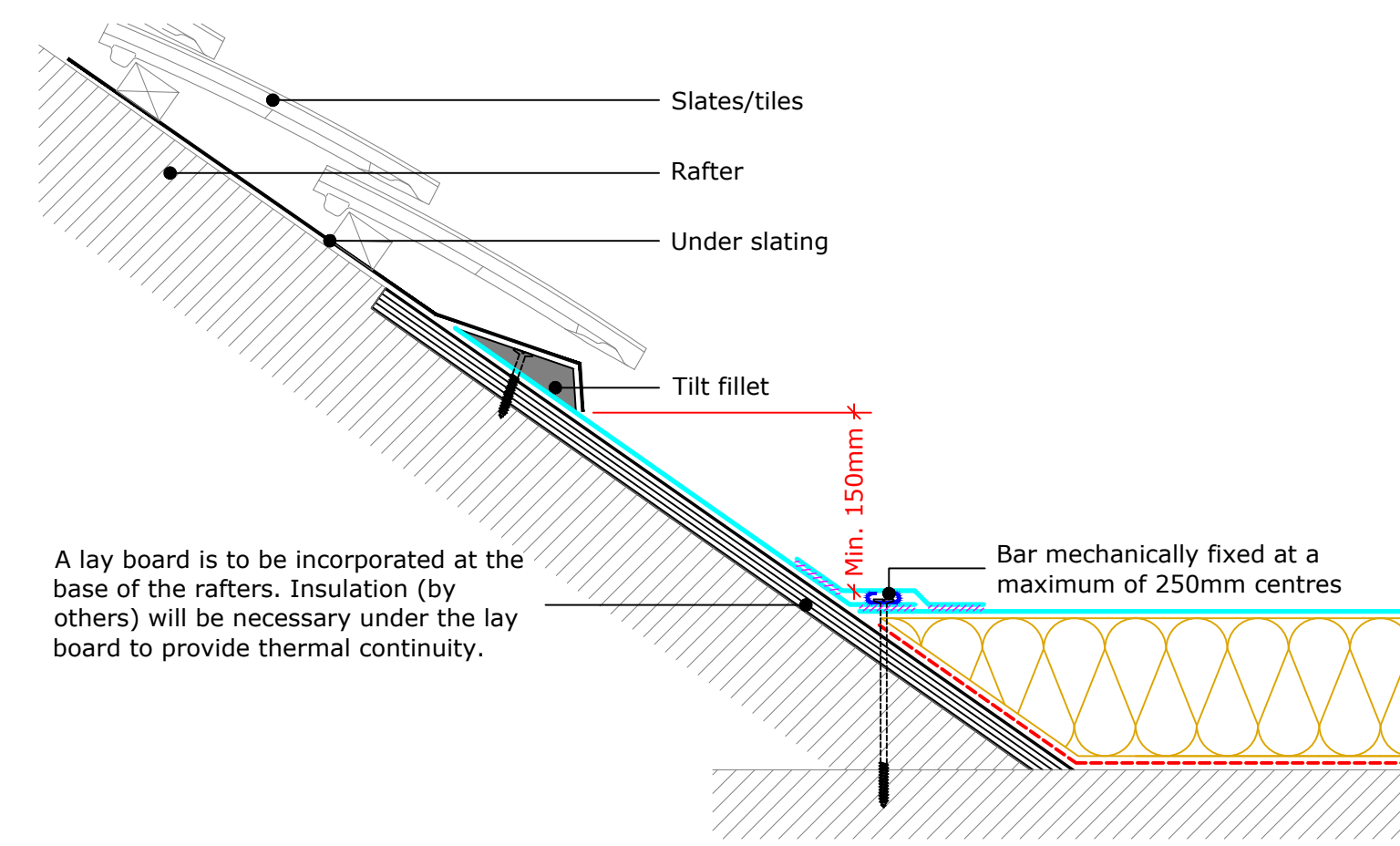


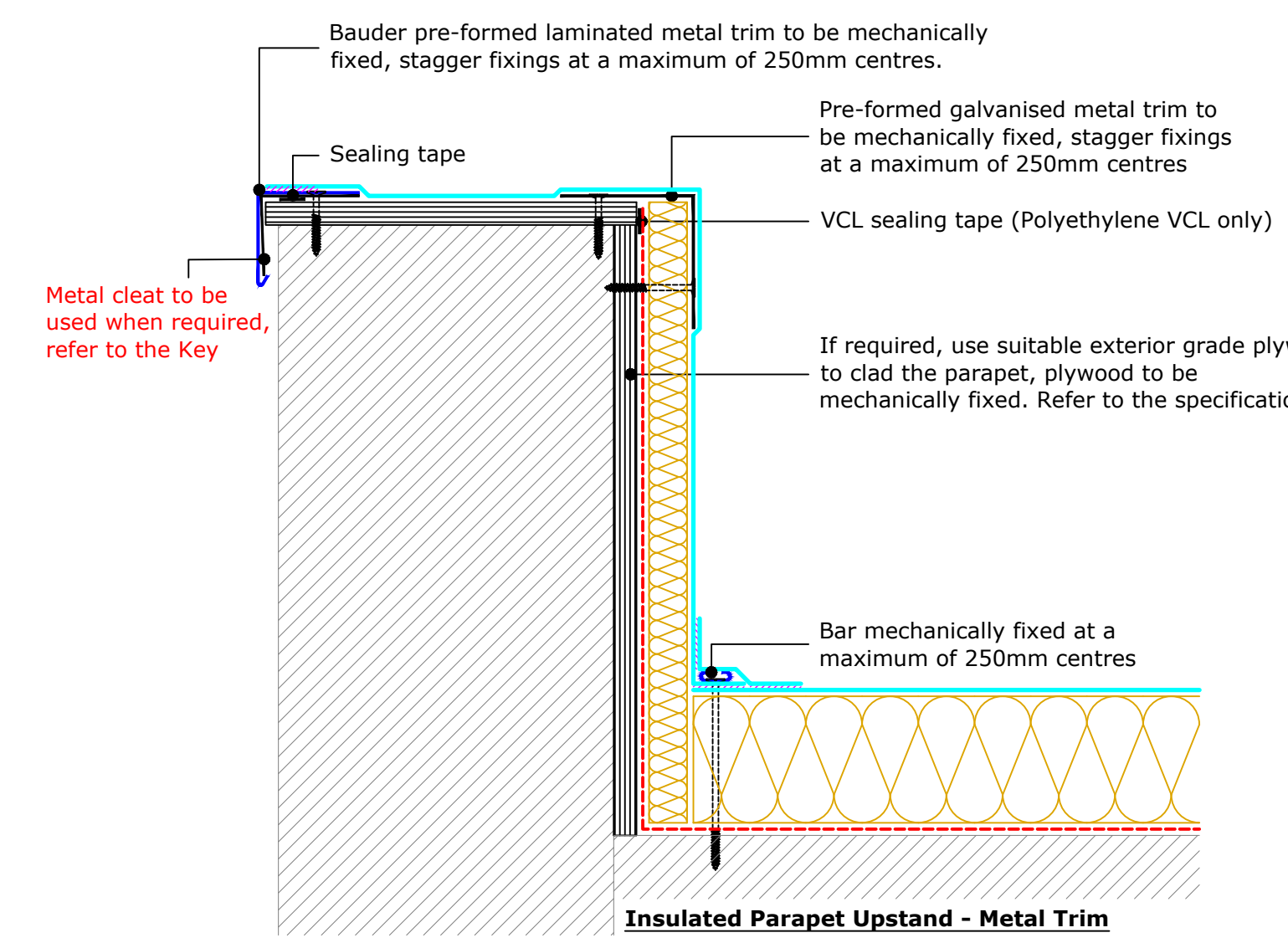
**Insulated Upstand**  
(Drg.No: D0100-00W\_MF\_201-001)



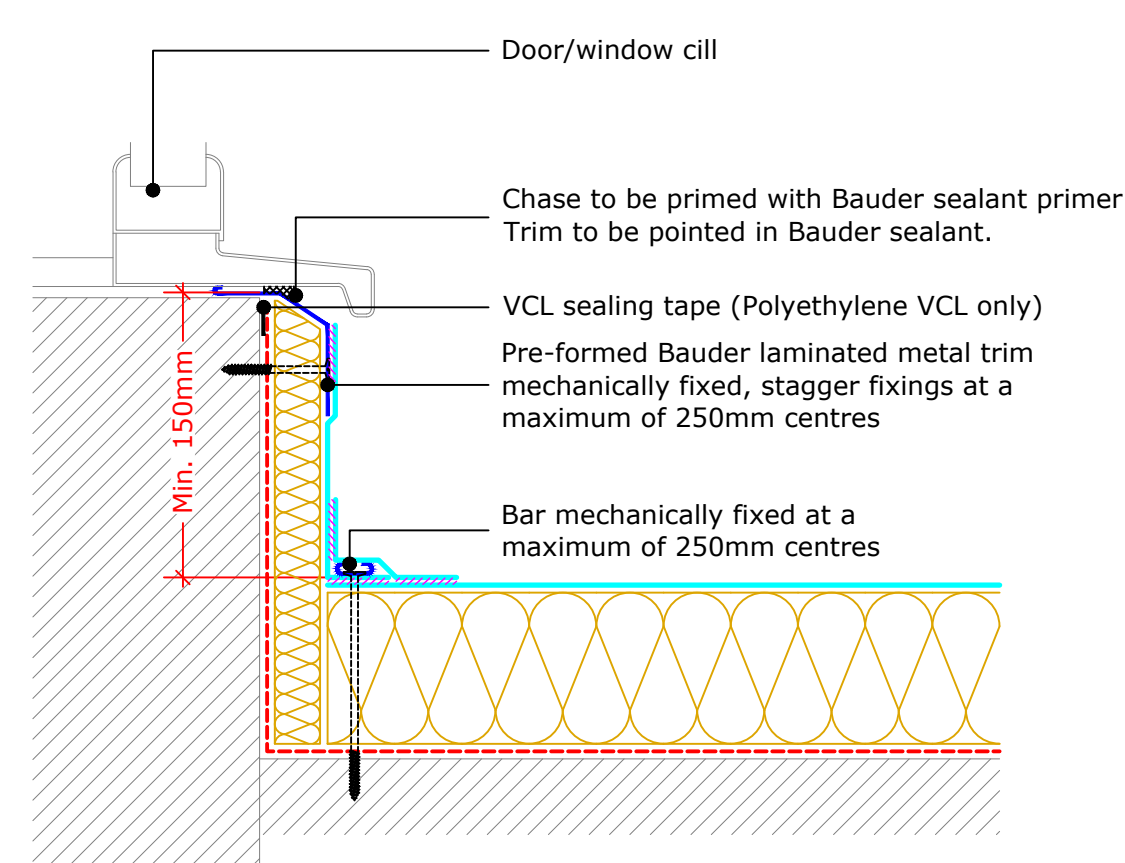
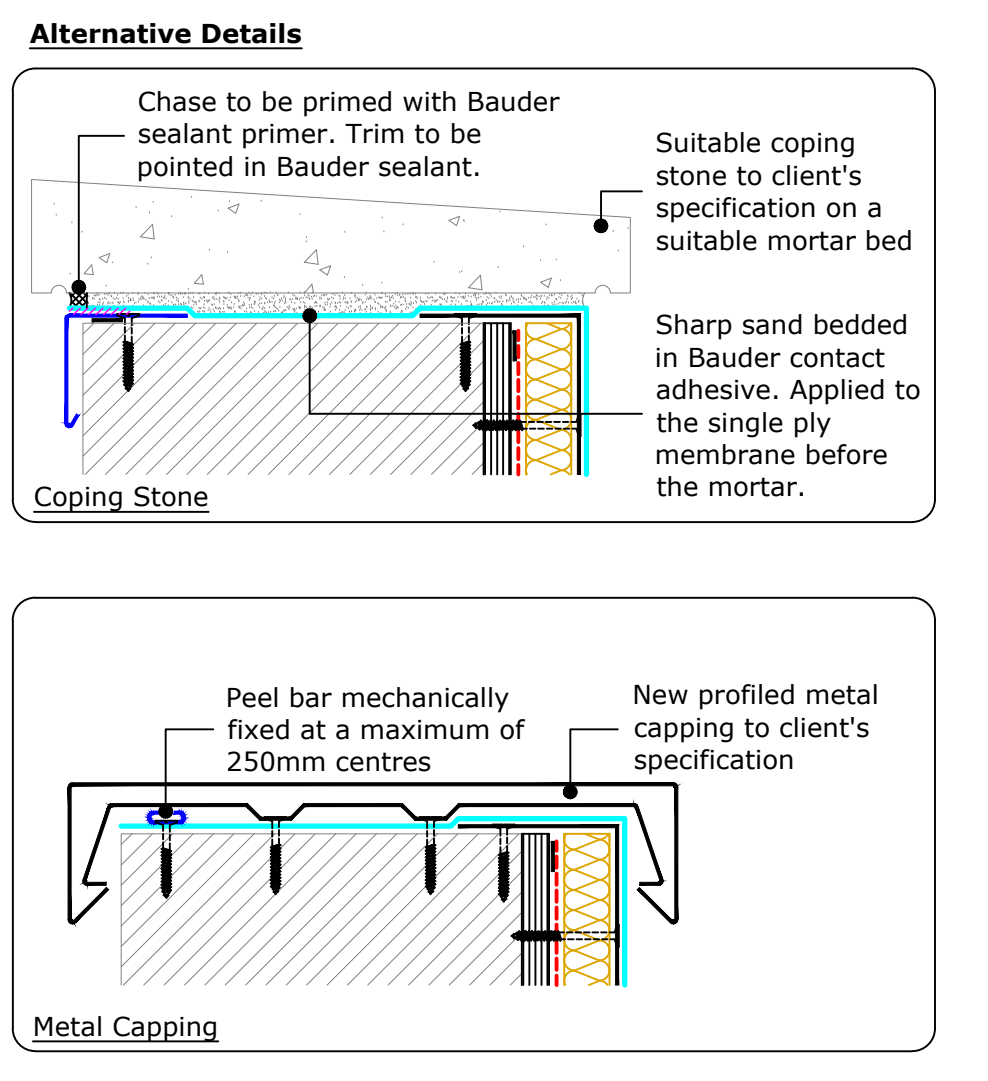
**Insulated Upstand to Vertical Cladding or Slates/Tiles**  
(Drg.No: D0100-00W\_MF\_201-002)



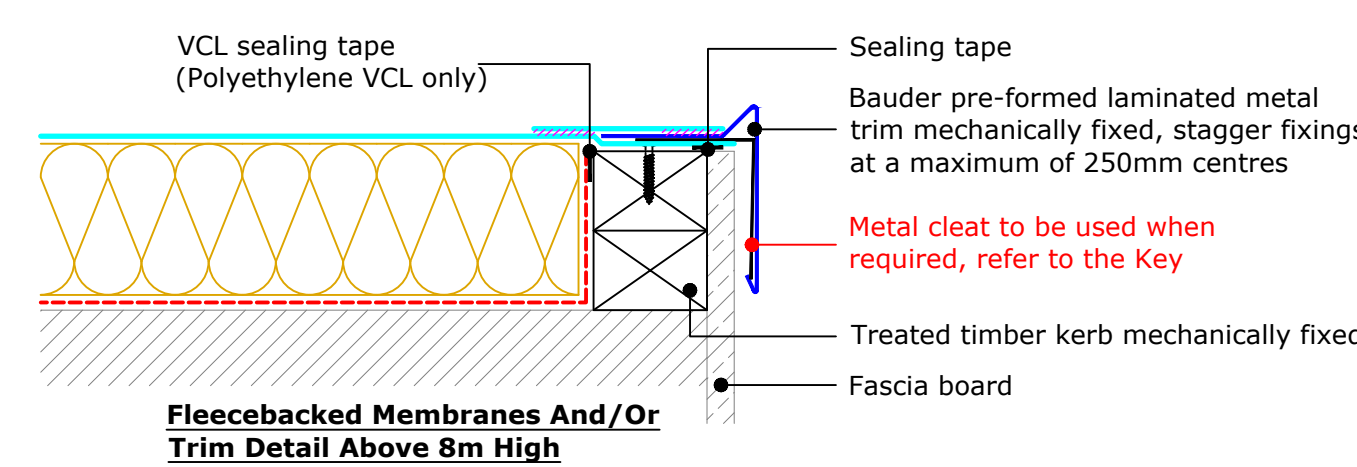
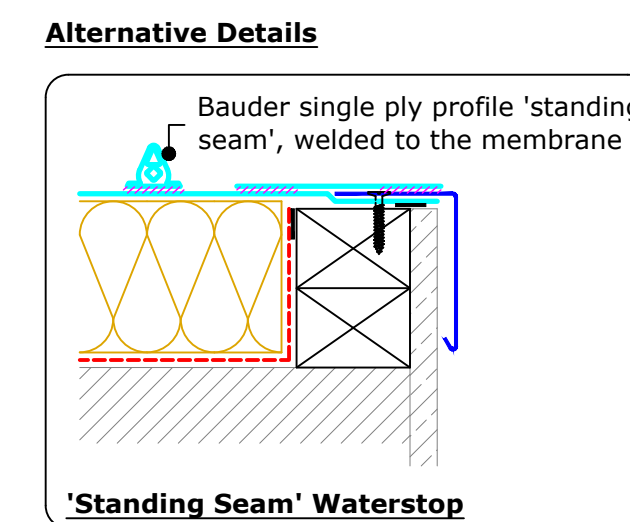
**Upstand to Pitched Roof**  
(Drg.No: D0100-00W\_MF\_001-004)



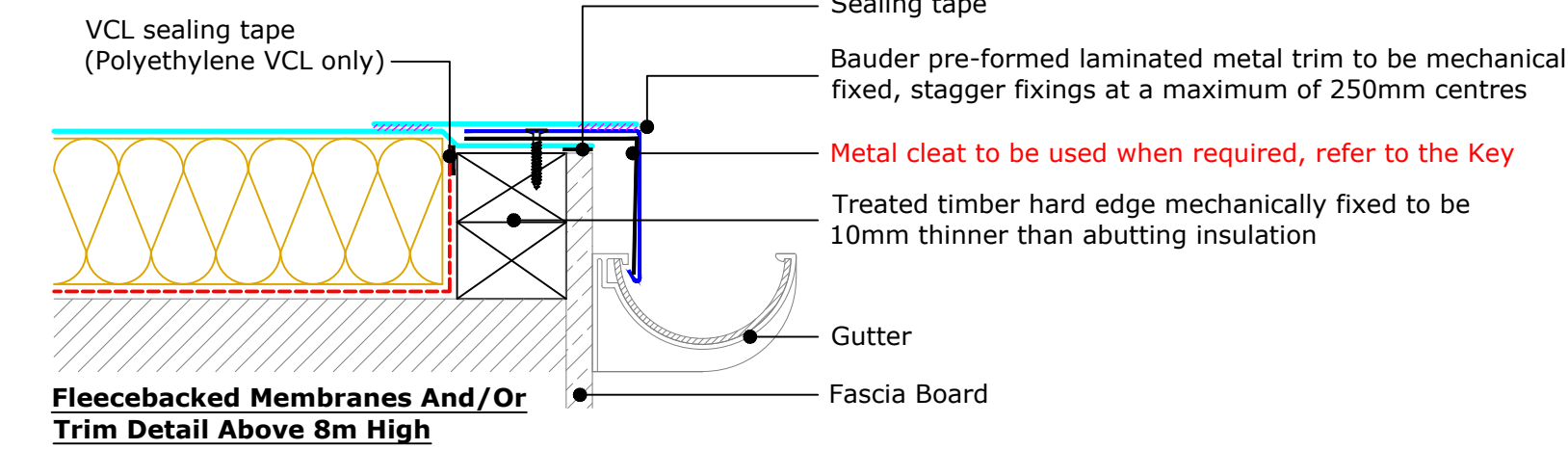
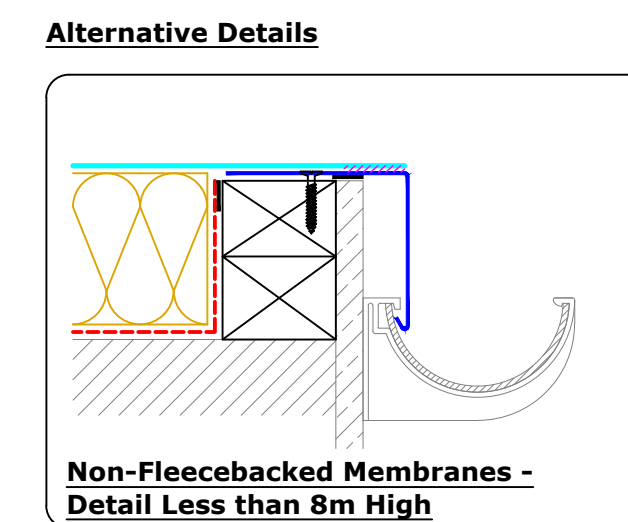
**Insulated Parapet Upstand**  
(Drg.No: D0100-00W\_MF\_203-001)



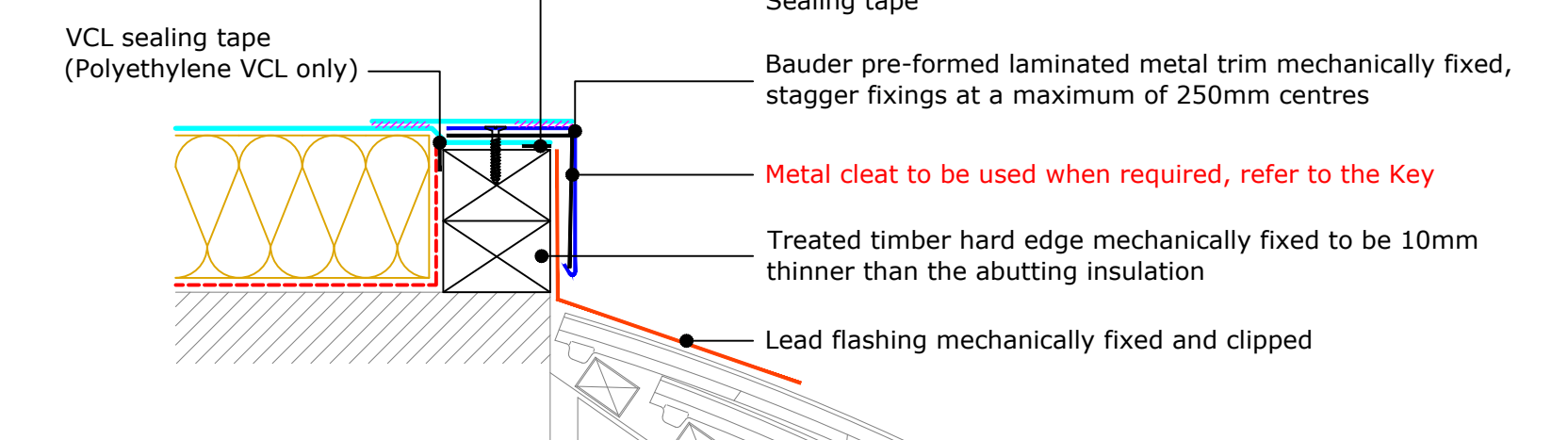
**Upstand to Door/Window**  
(Drg.No: D0100-00W\_MF\_201-003)



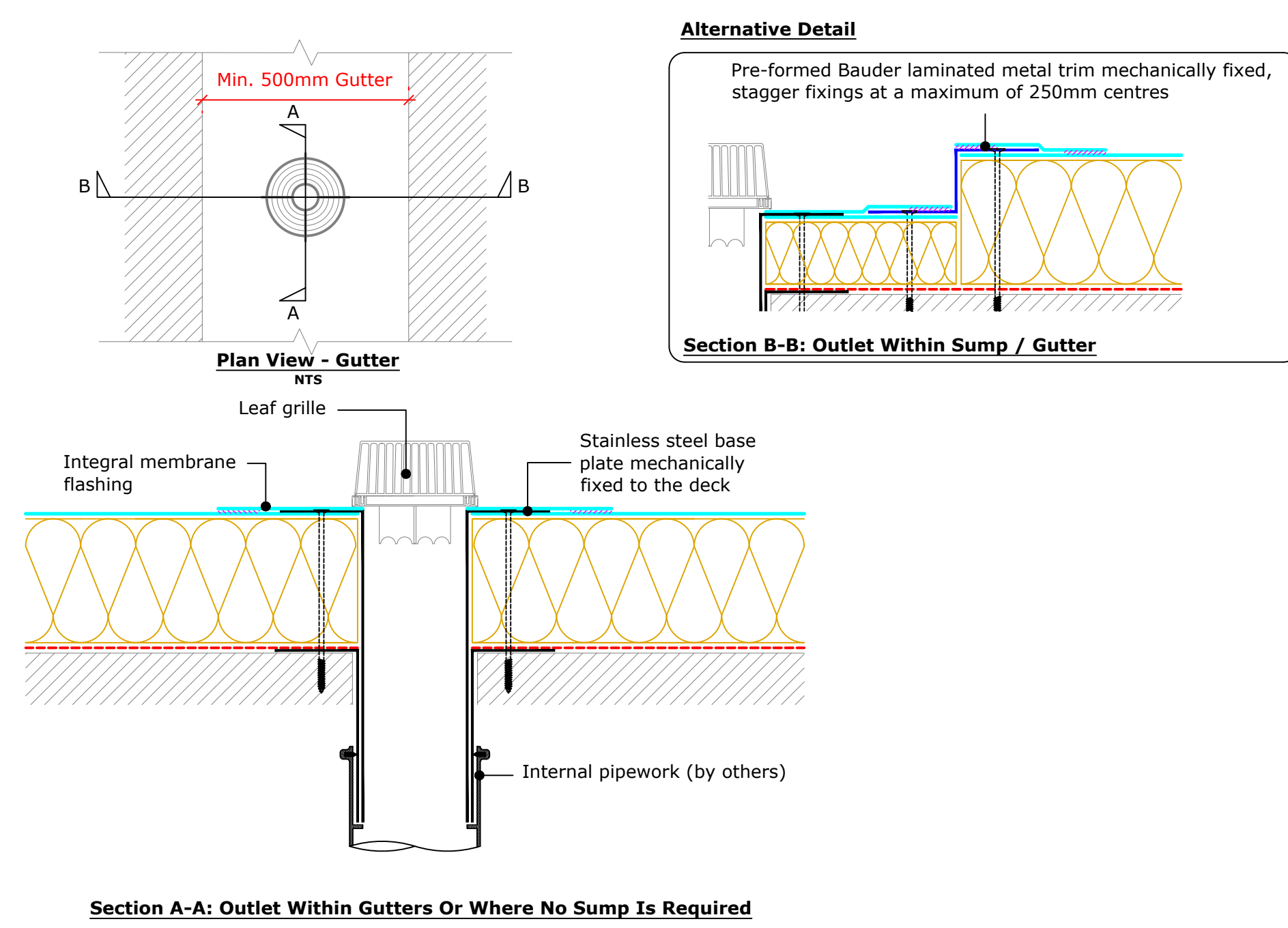
**Perimeter Kerb**  
(Drg.No: D0100-00W\_MF\_002-001)



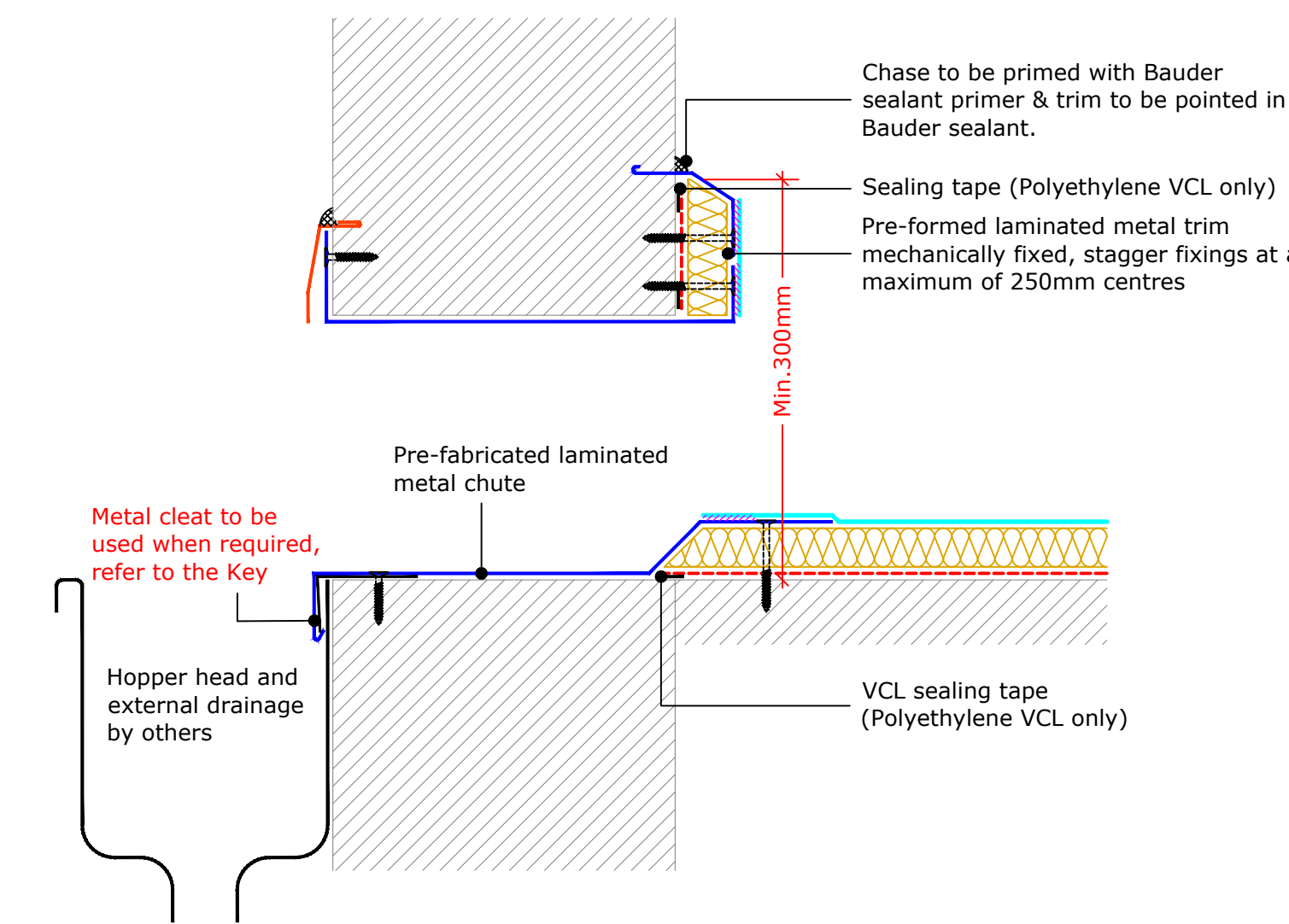
**External Gutter - Less than 8m High**  
(Drg.No: D0100-00W\_MF\_006-005)



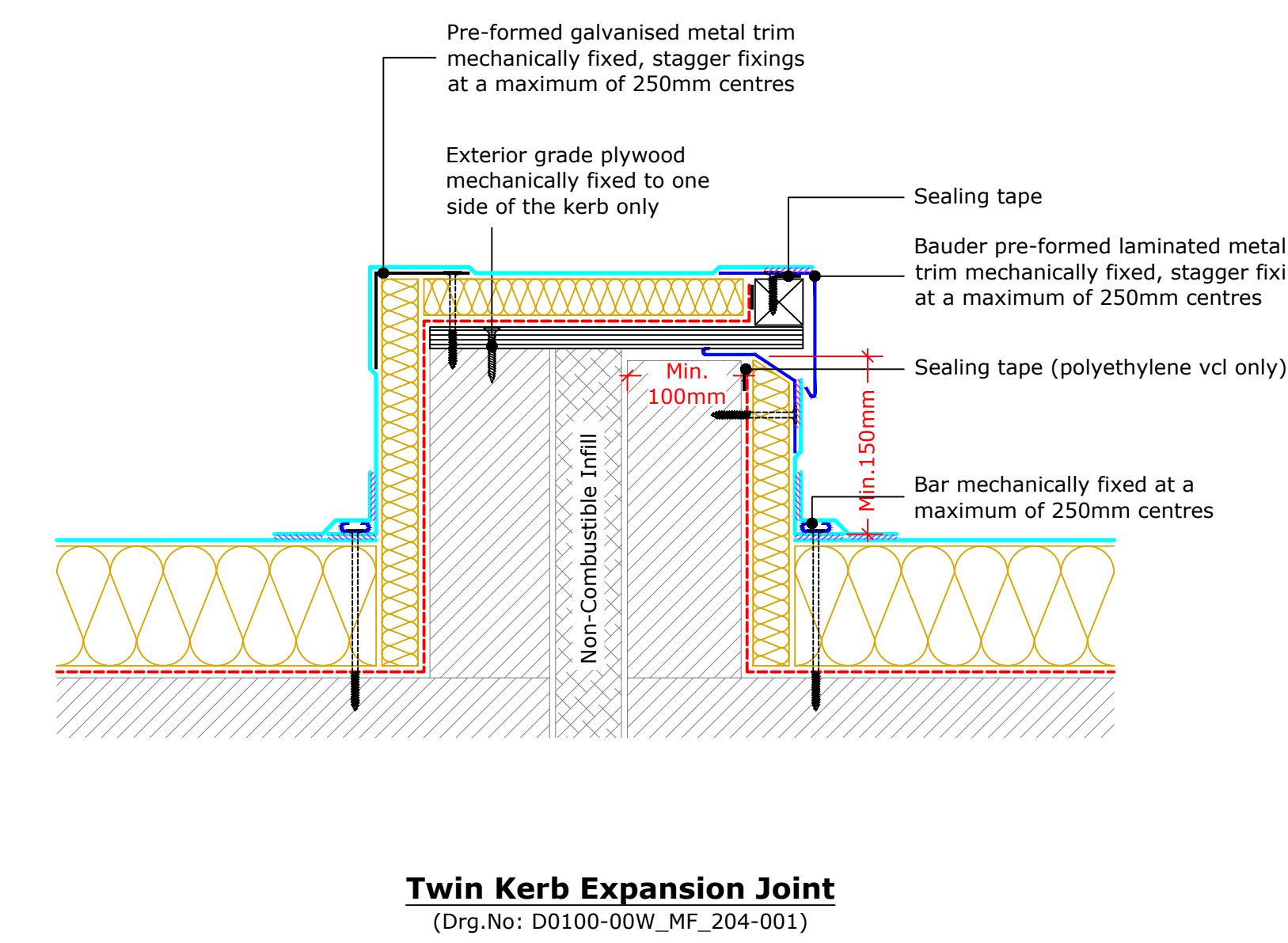
**Detail to Mansard Roof**  
(Drg.No: D0100-00W\_MF\_006-006)



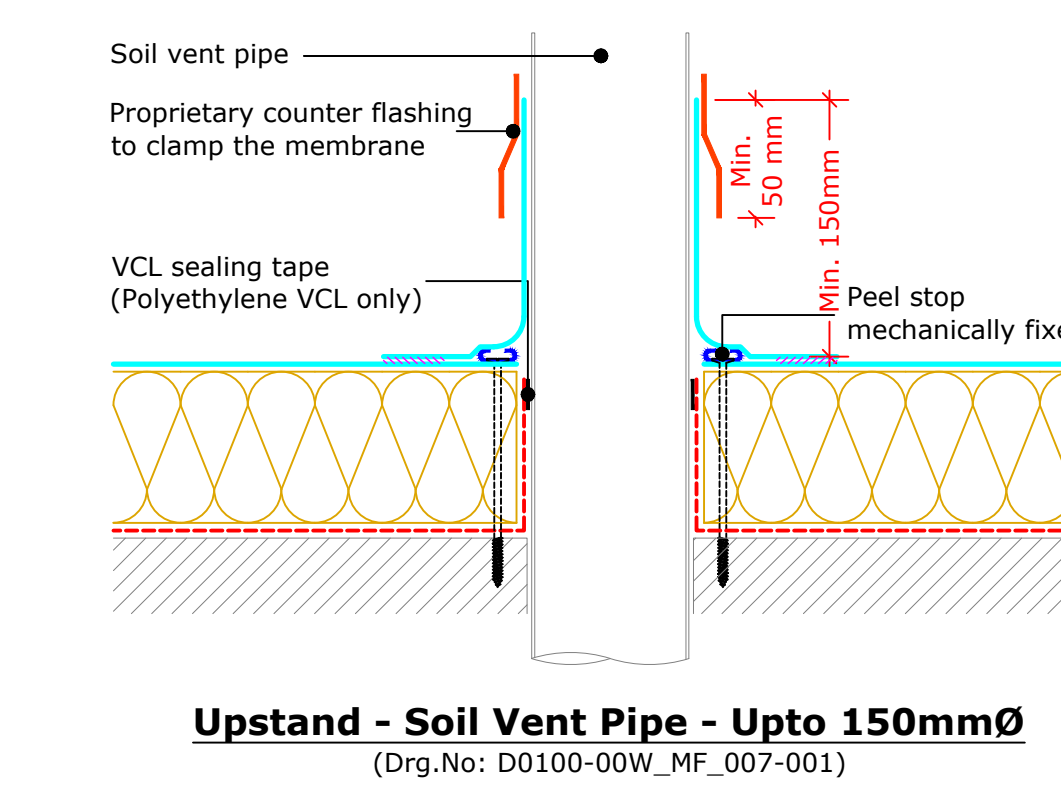
**Rainwater Outlet**  
(Drg.No: D0100-00W\_MF\_006-007)



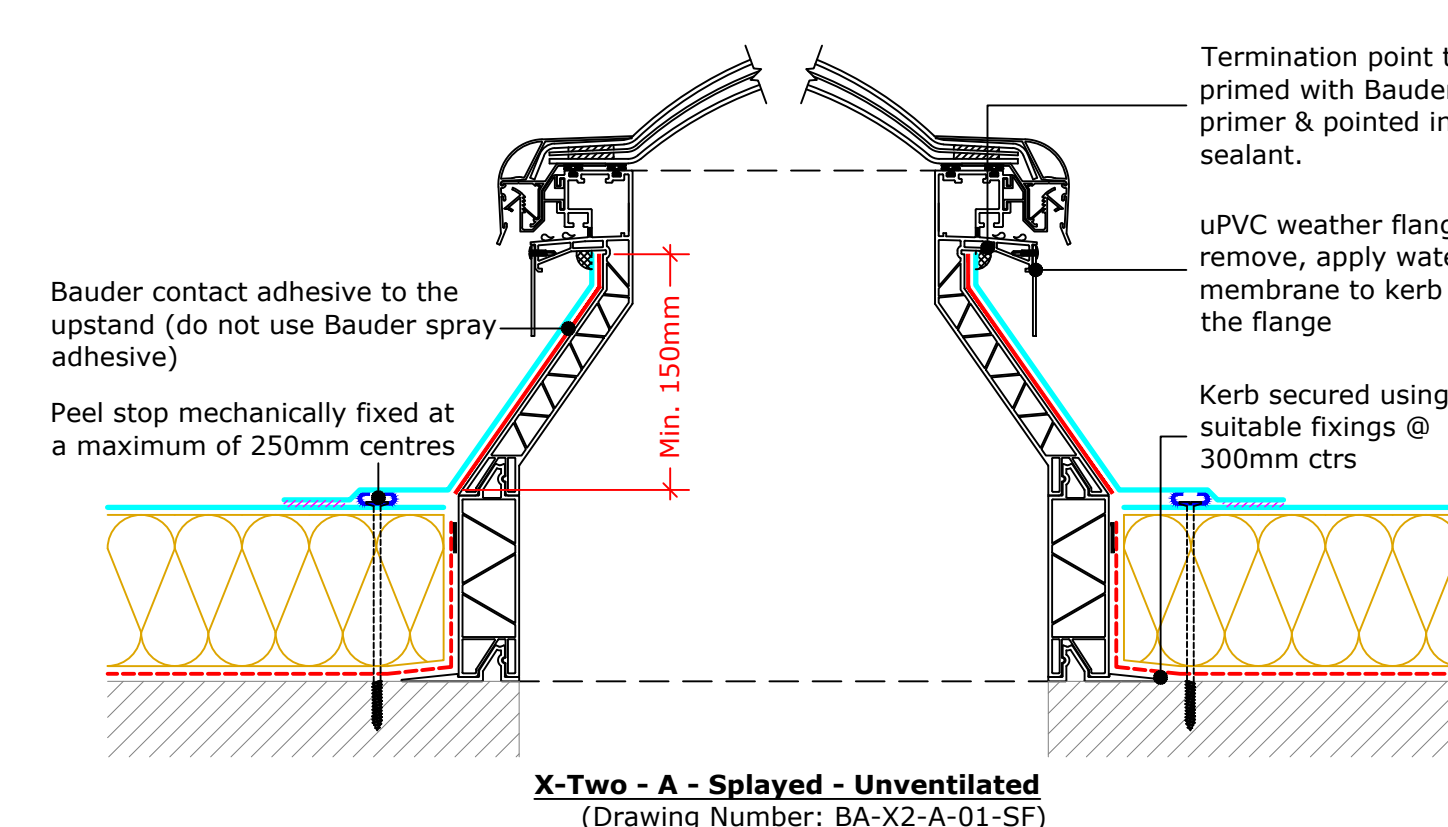
**Insulated Upstand - Laminated Metal Chute**  
(Drg.No: D0100-00W\_MF\_206-002)



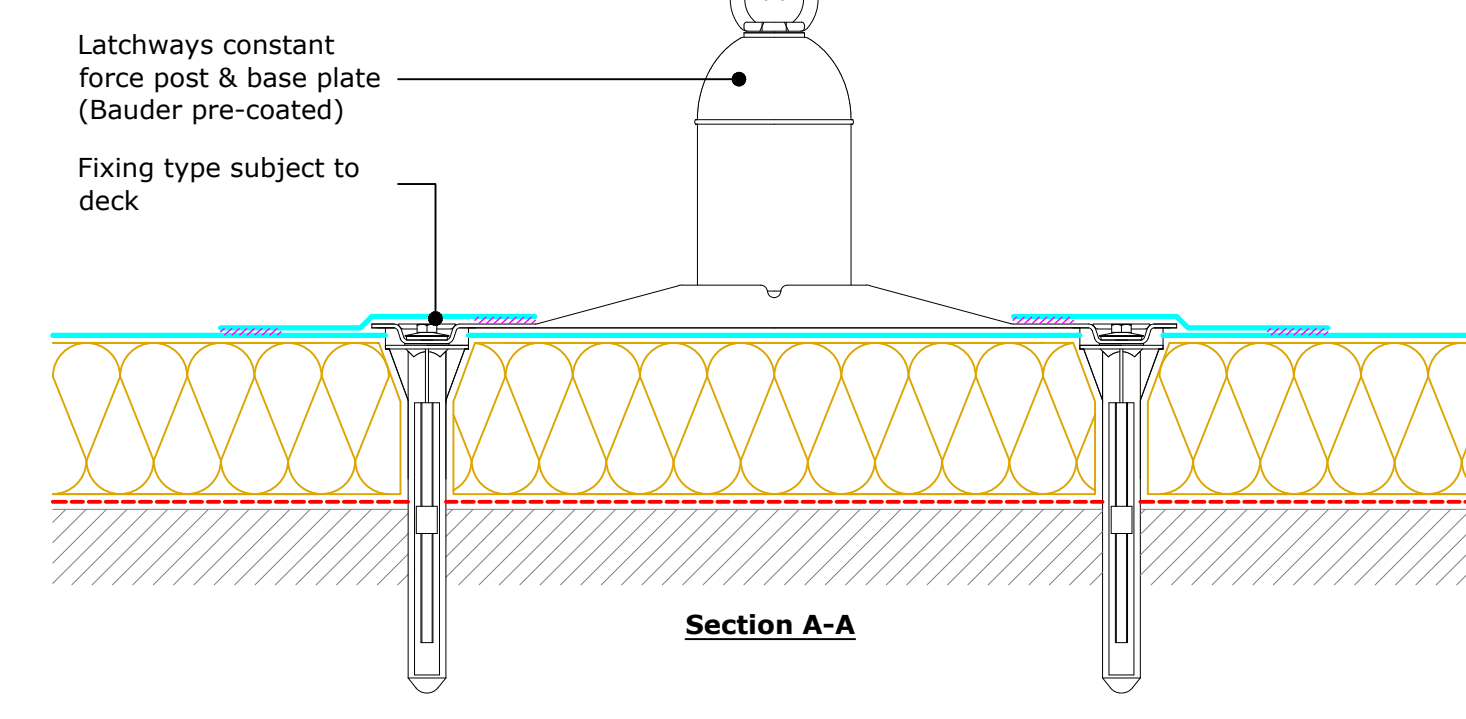
**Twin Kerb Expansion Joint**  
(Drg.No: D0100-00W\_MF\_204-001)



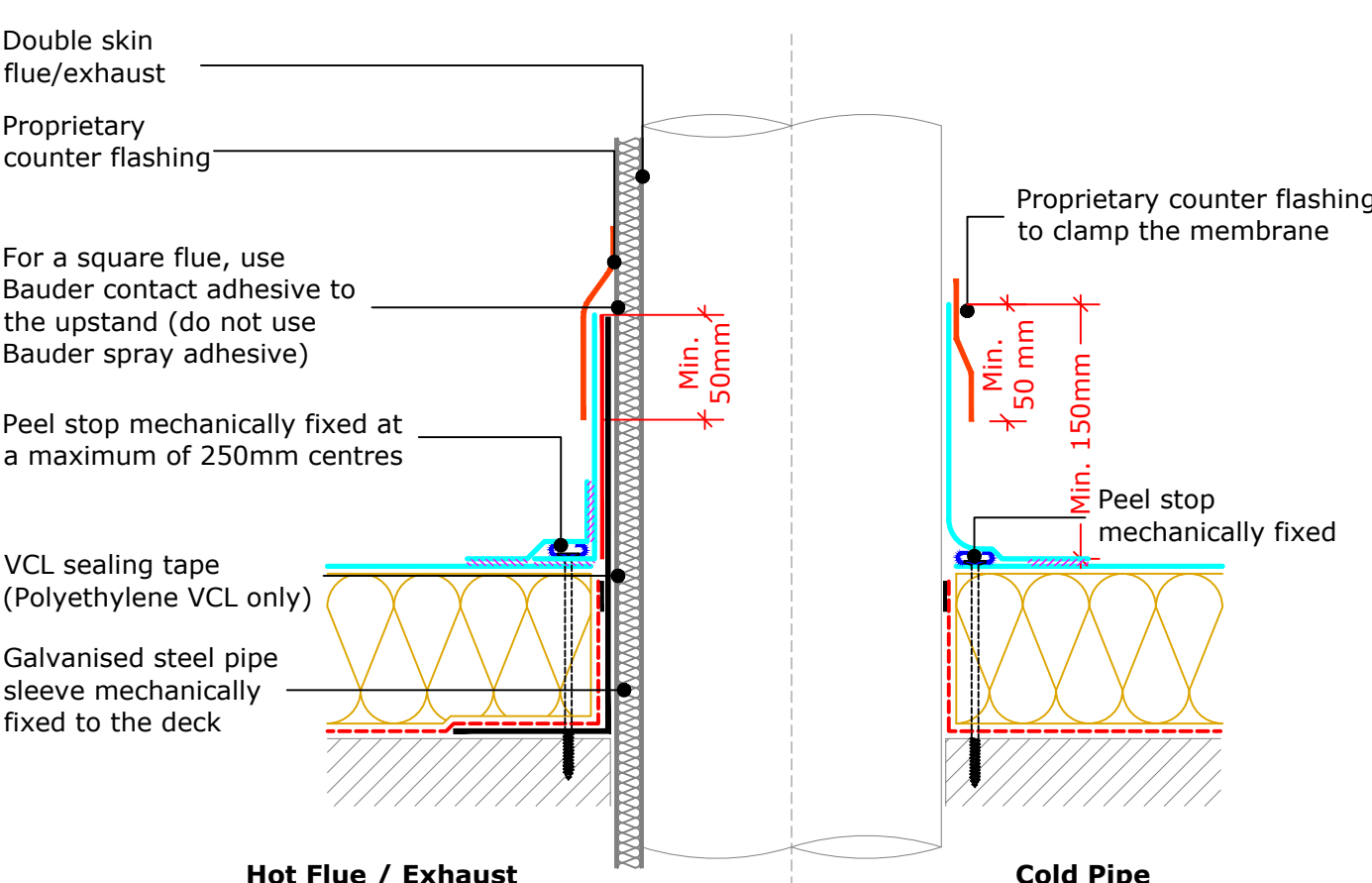
**Upstand - Soil Vent Pipe - Upto 150mm**  
(Drg.No: D0100-00W\_MF\_007-001)



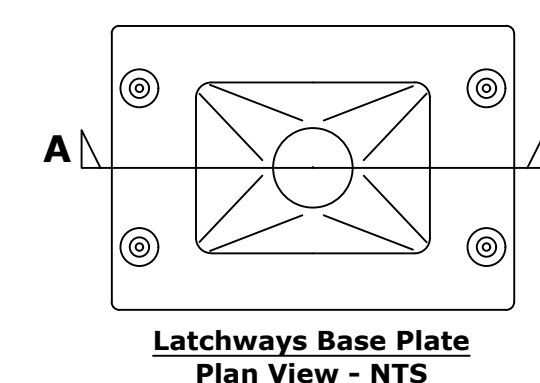
**Bauder Rooflight - Euroglaze**  
(Drg.No: D0100-00W\_MF\_008-001)



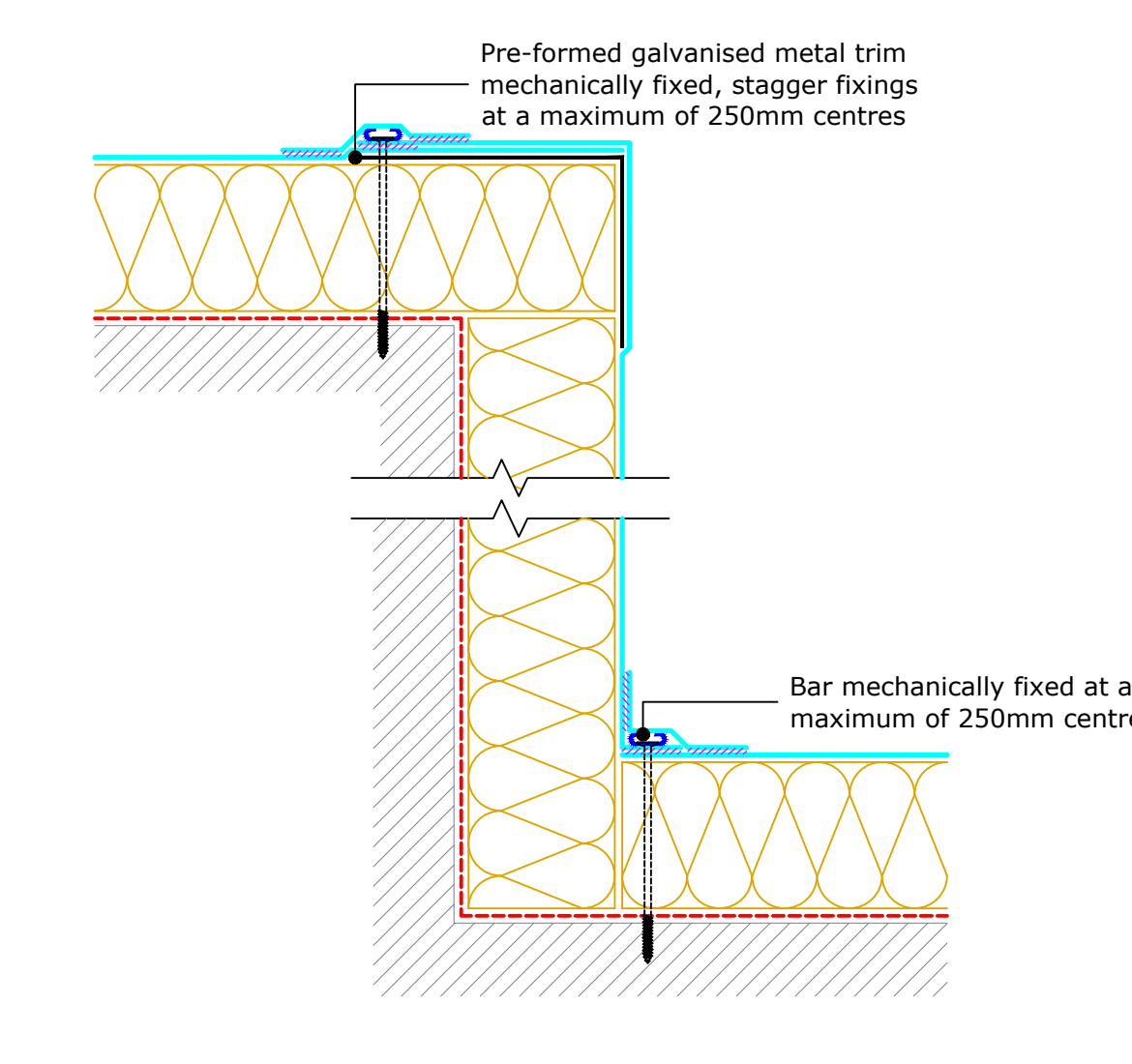
**Latchways Constant Force Post**  
(Drg.No: D0100-00W\_MF\_009-001)



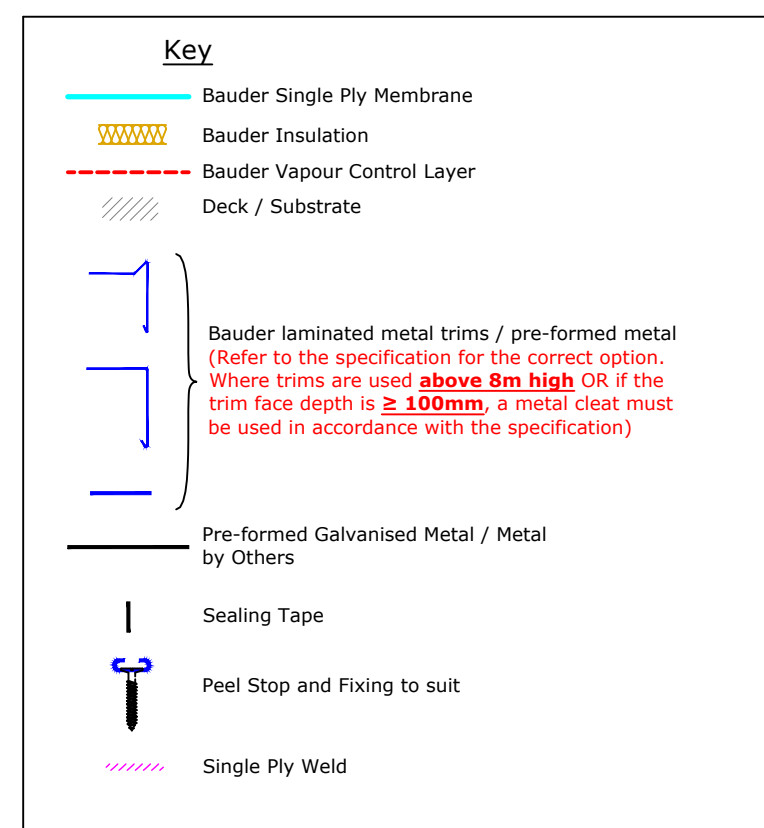
**Upstand to Hot Flue OR Cold Pipe**  
(Drg.No: D0100-00W\_MF\_007-002)



**Latchways Base Plate**  
Plan View - NTS



**Change In Levels**  
(Upto 2m, Unless Sidelap Fixings are used)  
(Drg.No: D0100-00W\_MF\_210-001)



- IMPORTANT NOTES:**
- This detail is suitable for the following Bauder Systems: Bauder Thermoflex and Thermopan.
  - This Drawing Shows Alternative Options. For the Correct Solution to be Used, Refer to the Project Specific Specification.
  - Do not scale to ascertain dimensions.
  - All dimensions to be checked and verified on site prior to commencement of work.
  - This drawing is to be read in conjunction with the specification and associated drawings.
  - This detail is a guideline only, representing typical detailing conditions and illustrates the correct application of the above Bauder System. It may be necessary to modify this detail to suit specific project design constraints and conditions.
  - Refer to the Bauder Specification for the product descriptions and method of application. For clarity the method of attachment has not been shown.

Rev	Date	Description	Drawn By

**BAUDER**

UK OFFICE  
Bauder Limited  
70 Lansdown Road, Ipswich,  
Suffolk, IP1 0QR,  
England.  
Tel: +44 (0)1473 257671  
Fax: +44 (0)1473 230761  
Email: technical@bauder.co.uk  
bauder.co.uk

IRELAND OFFICE  
Bauder Limited  
O'Duffy Centre, Cross Lane,  
Carrigrohane, Co. Monaghan,  
Ireland.  
Tel: +353 (0)42 9692 333  
Fax: +353 (0)42 9692 879  
Email: technical@bauder.ie  
bauder.ie

**SINGLE PLY TYPICAL DETAILS**  
Mechanically Fixed

Scale: 1:5  
Drawing Number: D0100-00W\_MF\_200-001  
Date: Aug 2017