

LiquiFIBRE Detailing Kit Application Instructions



LiquiFIBRE Detailing Kit

Waterproofing compound incorporated with reinforcement fibres for awkward penetrations

Used in conjunction with RBM, PVC membrane systems, or cold applied waterproofing.



Pre-Conditions

Refer to the project specification for the location of this product, and enclosed detail drawings.

Coverage

A 5kg container of Bauder LiquiFIBRE is sufficient to cover an area of 1.66m².

Storage

Keep in a cool dry place, above freezing and out of direct sunlight. The kit can be stored unopened for at least six months.

Installation Precautions

This product is not suitable for:

- Application to surfaces with a temperature above 35°C and relative humidity over 95% or for use on surfaces with an operating temperature exceeding 80°C.
- Waterproofing a joint between surfaces which are not securely fixed together (eg. a protrusion through the deck which is not fixed to the deck).
- Waterproofing across voids.

KIT ITEMS

- 1** LiquiFIBRE - 5kg metal can
- 2** Catalyst - 2 x 0.10kg sachets
- 3** PMMA Cleaner - 0.45 Litre metal screw-top container
- 4** Optional 4 x 1kg bags of mineral granules (charcoal, natural slate, brown or green to match adjacent bitumen membrane capsheet) at extra cost.

ADDITIONAL DOCUMENTATION

- Application instructions and detail drawings
- Associated tools and PPE



- PMMA Cleaner** must be allowed to evaporate for 20 minutes and overcoated within 60 minutes. The cleaner must not come into contact with bituminous membranes.
- Asphalt, exposed bitumen, timber or cementitious substrates must be suitably prepared and primed with the relevant LiquiTEC primer.
- Safety:** Refer to Safety Data Sheet for all storage, PPE, handling and disposal advice.

Mixed Products Details

- Pot life: approx. 20 minutes.
- Rainproof: approx. 30 minutes.
- Overcoat/traffic time: 45 minutes.
- Colour: Traffic Grey (RAL 7043 approx.).

Application

Substrate Preparation

1. The substrates that are to receive Bauder LiquiFIBRE must be clean dry and free from dust, laitence, grease, oil and any other contaminants.
2. Cover the completed waterproofing with a clean tarpaulin to protect from spills and splashes.
3. **Metal** should be rubbed down thoroughly with Bauder PMMA Cleaner and abraded to provide a key. Any paint should be removed back to clean metal. Any rust that cannot be removed must be treated with 'Hammerite No.1 Rustbeater' strictly in accordance with the manufacturer's instructions.
4. **Plastics** (including PVC membranes) should be rubbed down with Bauder PMMA Cleaner and lightly abraded before carrying out adhesion testing.

Initial Masking and Preparation

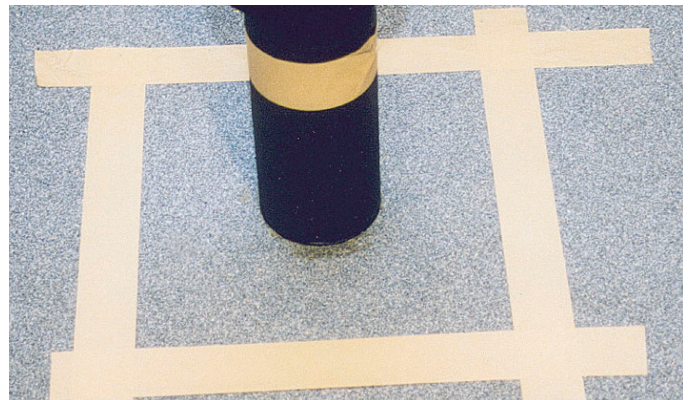
5. Apply the masking tape onto the detail to be waterproofed, at a minimum height of 150mm above the finished surface level of the main roof waterproofing.
6. Mask the perimeter of the works on the flat area as required (minimum 100mm from detail).
7. Cover the mixing area with a clean tarpaulin to prevent contamination of the substrate.
8. Stir the Bauder LiquiFIBRE thoroughly for 2 minutes.

First Application Coat

9. Pour half of the 5kg container of Bauder LiquiFIBRE into the orange bucket.
10. Add one sachet of catalyst to the bucket (half a sachet if the ambient temperature is over 15°C) whilst stirring until a smooth consistency is achieved.
11. Apply a thick layer of catalysed Bauder LiquiFIBRE with a fully loaded bristle paint brush at a rate of 1.5kg/m².
12. Before the LiquiFIBRE cures, remove the masking tape then allow to cure for a minimum of 45 minutes.
13. Pot life is approximately 30 minutes.
14. Rainproof after approximately 30 minutes.
15. Can be walked on after approximately 45 minutes.

Second Masking

16. Re-apply masking tape in a position that allows the second coat of Bauder LiquiFIBRE to cover a slightly larger area (5mm all round) than the first coat.



Application *continued*

Second Coat Application

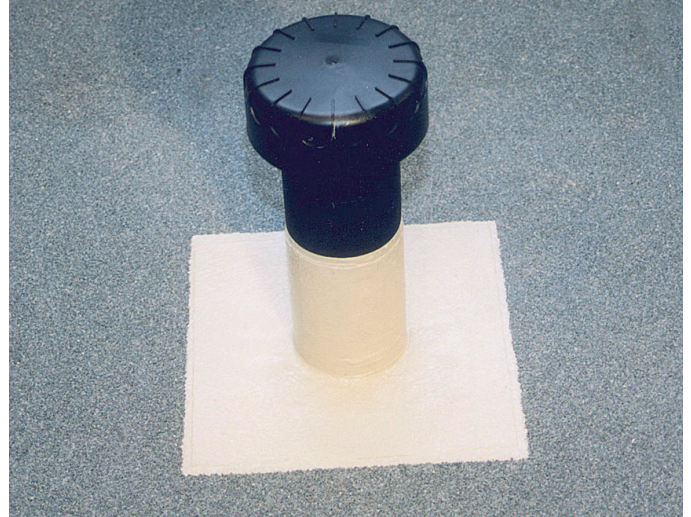
17. Add one sachet of catalyst (half a sachet if the ambient temperature is over 15°C) directly into the remaining half full tin of Bauder LiquiFIBRE whilst stirring until a smooth consistency is achieved.
18. Apply a **thick** coat of Bauder LiquiFIBRE as before but with brush strokes at 90° to the first coat.
19. If required, add Bauder mineral granules immediately by broadcasting by hand into the wet resin.
20. Before the second coat cures, remove the masking tape and allow to cure for a minimum of 45 minutes.
21. Pot life is approximately 30 minutes.
22. Rainproof after approximately 30 minutes.
23. Can be walked on after approximately 45 minutes

Cleaning

Bauder LiquiFIBRE can be removed from tools and bucket using Bauder PMMA Cleaner, and must not be disposed of into drains. Bauder PMMA Cleaner must not be allowed to come into contact with Bauder bituminous membranes.

Waste Material

Unused Bauder LiquiFIBRE should be catalysed in the tin and allowed to cure before disposal.



IMPORTANT:

- If work has been interrupted for more than 12 hours or the surface has been rained on, areas to be overcoated must be pre-treated with Bauder PMMA Cleaner.
- Bauder PMMA Cleaner must be allowed to evaporate for 20 minutes and overlaid within 60 minutes.

Respecting the planet

Reducing use of materials



This literature is only available as a digital brochure to reduce the use of paper. If you need to print it, please recycle at the end of purposeful use.

UNITED KINGDOM

Bauder Limited
70 Landseer Road, Ipswich, Suffolk
IP3 0DH, England
T: +44 (0)1473 257671
E: info@bauder.co.uk
bauder.co.uk

IRELAND

Bauder Limited
O'Duffy Centre, Carrickmacross,
Co. Monaghan, Ireland
T: +353 (0)42 9692 333
E: info@bauder.ie
bauder.ie

BAUDER
making roofs secure.