

# Installation Guide to Warm Roofs

## Bauder Bitumen Parapet Outlet DN 100

### Pre-conditions

This quick reference guide describes the correct installation of the Bauder Bitumen Parapet Outlet DN 100.

It is essential that you read these instructions before installing the Bauder Parapet Outlet DN 100 and refer to the project specification for the location of this outlet.

### Important

Bauder has taken care to ensure that the literature is correct and up to date. However, it is not intended to form any part of a guarantee. Contact Bauder to check whether there has been any changes to this literature. Please ensure you have read the recycling instructions and dispose of all packaging responsibly.

### Components

The Bauder Parapet Outlet DN100 with pre-assembled pipe can be cut to suit the parapet's requirements.

Dome grate to prevent leaf litter etc entering the pipe.

### General Advice

With the installation of any flat roof rainwater drainage outlets BS EN 12056-3:2000 should be observed.

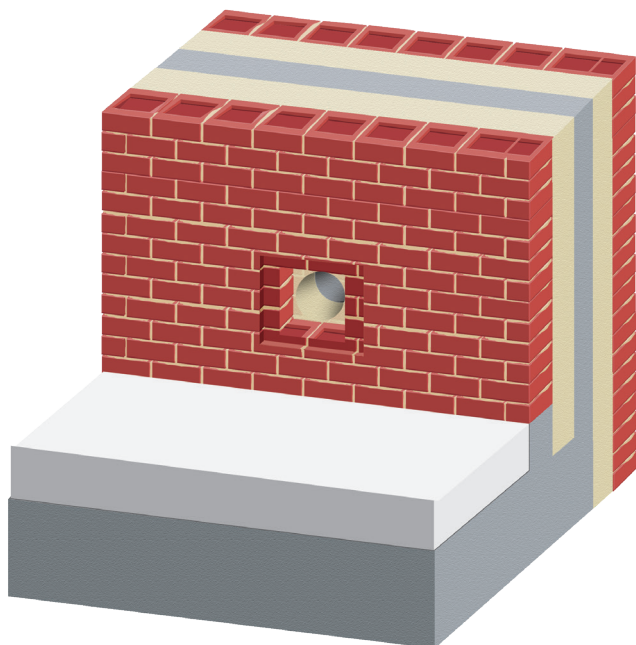
### Some points to observe are:

- The rainwater outlet should be installed at the low point of the roof falls.
- The outlet is an integral component of the Bauder waterproofing system and this precaution is important to prevent damage to the outlet and the waterproof connecting flange prior to installation.
- The outlet body must be mechanically fixed to the wall.
- Roof outlets must be freely accessible for maintenance.

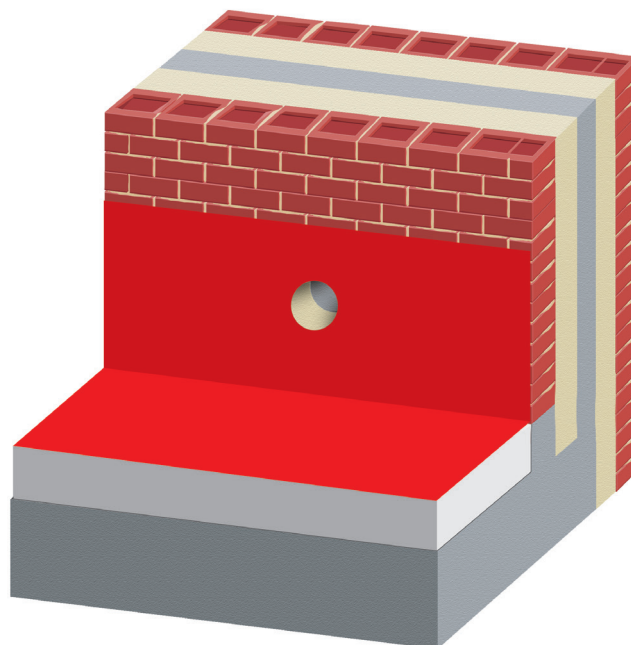


## Installing to Warm Roofs

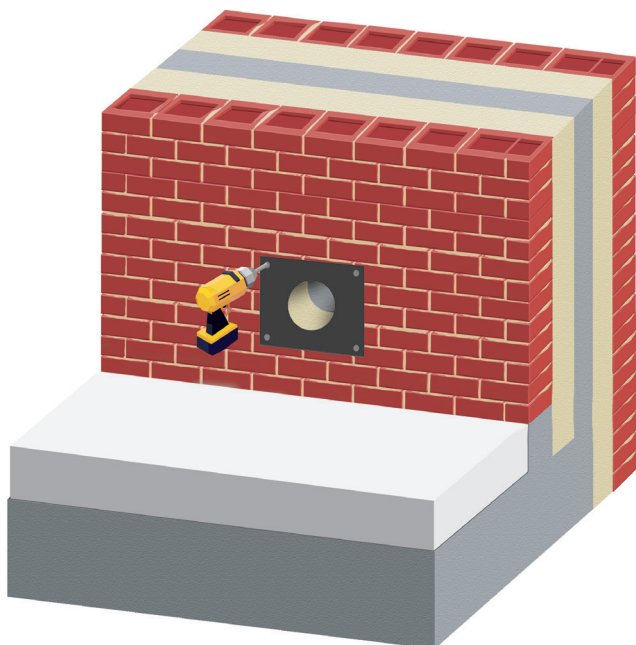
**1:** Parapet wall constructed with core drilled hole provided in the correct position, taking account of the insulation thickness to determine the finished surface level.



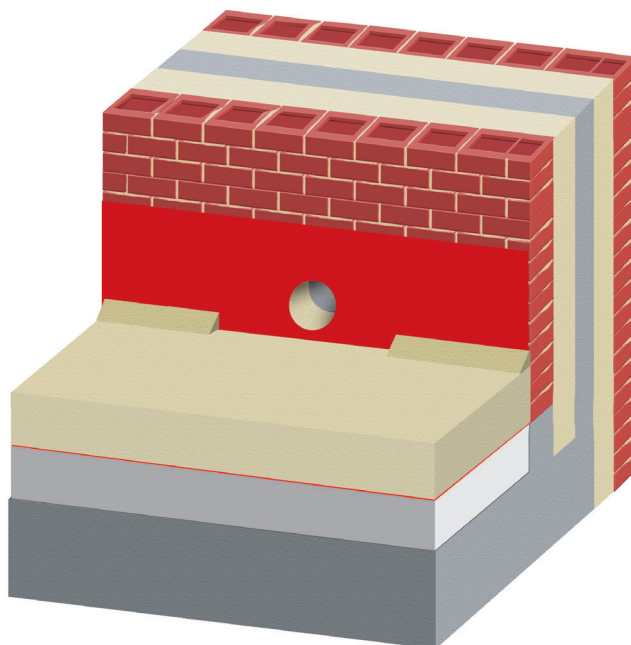
**3:** Apply the Air & Vapour Control Layer, bonding this onto the installed flexible vapour barrier flange.



**2:** Mount the flexible vapour barrier flange plate centrally to the facade opening.

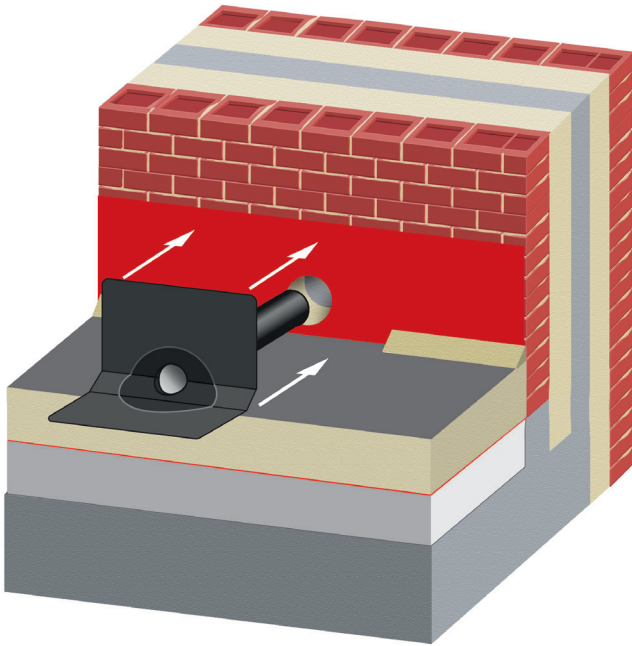


**4:** Install the insulation and angle fillets as per specification, ensuring drainage through the opening is not impeded.

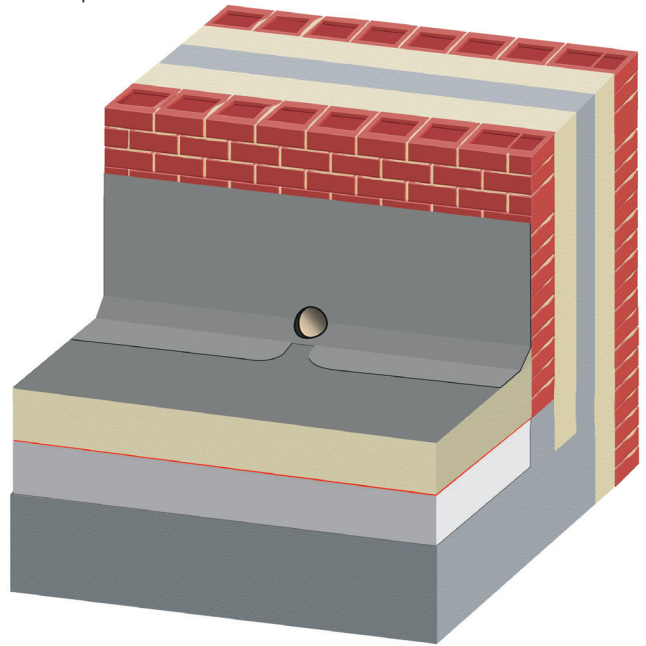


## Installing to Warm Roofs

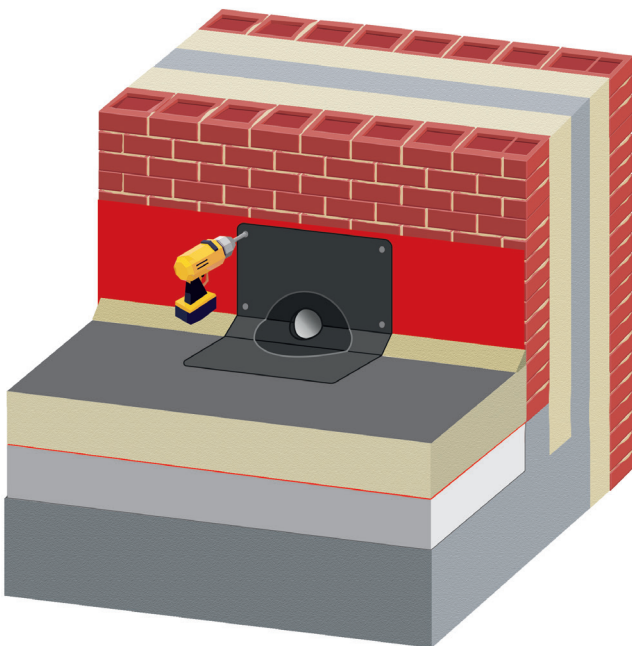
**5:** Push the Bauder Parapet Outlet together with the attached connection pipe through the core drill in to the parapet.



**7:** Apply the waterproof layers, first bonding the underlayer on to the bituminous connection flange and AVCL ensuring a minimum 100mm seal is obtained above the height of the insulation. Once complete, then installing the capping sheet onto the underlayer on the field area, with a separate flashing to the upstand.



**6:** Mechanically fix the flange of the outlet body to the wall.



**8:** Insert the dome grate and tighten as necessary to ensure a tight fit.

