

# Installation Guide

## Bauder Blue Roof Flow Restrictor

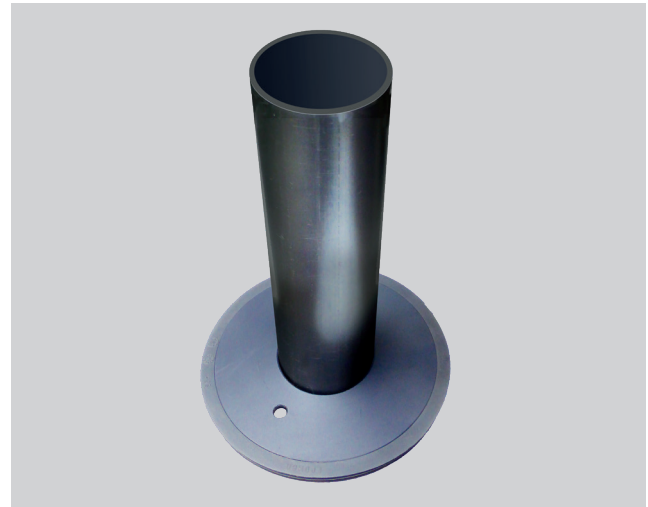
### Pre-conditions

The guide describes the correct installation of the Bauder Blue Roof Flow Restrictor within a Bauder Insulated Outlet.

It is essential that you read these instructions before installing the Bauder Blue Roof Flow Restrictor and refer the project specification for the H-Max levels.

### Components

Each flow restrictor comprises four parts that are assembled, measured and the overflow pip cut to meet the specification requirements before finally installing into the outlet.



### Setting up the Flow Restrictor

**1:** Check each flow restrictor is correct and meets the specification of the particular roof area it is to be fitted on. Every flow restrictor is manufactured with a specific number of restrictor holes to meet the roof area SuDs requirements.

**2:** Fit the inner and outer seals on the base plate ensuring a tight fit. (no snags or lips)

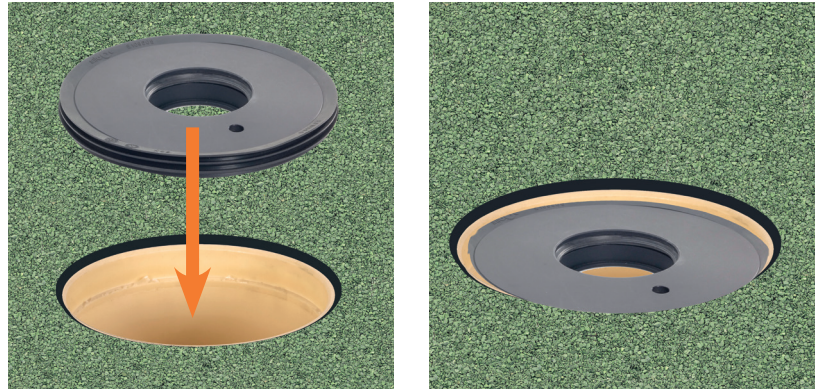
The outer seal has a specific orientation and should be positioned with the sealing ribs uppermost on the base plate.



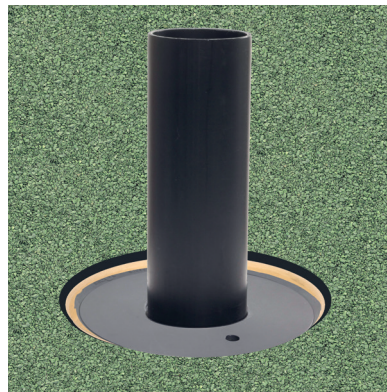
Completed base plate with inner and outer seals in position.

## Positioning the Overflow Pip and Cutting to the H-Max Height

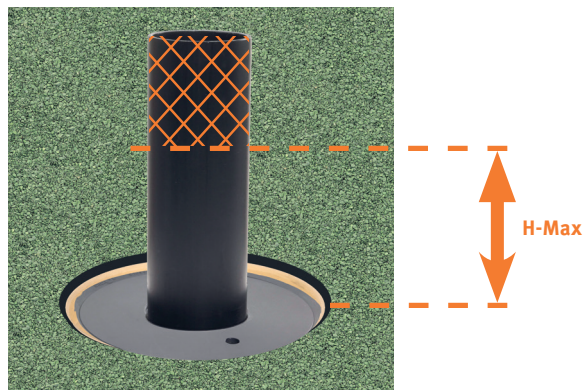
**3:** Insert the base plate into the outlet, this should sit 10mm below the surface of the outlet when correctly installed.



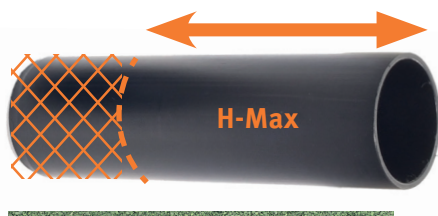
**4:** Lubricate the chamfered end of the overflow pipe and push into the central hole of the baseplate, a stopper within the baseplate sits at 27mm. Ensure the overflow pipe is inserted into this point.



**5:** From the specification provided for the project, measure the H-Max from the top of the waterproofing and mark on the overflow, it is advisable to do this at four separate points.



**6:** Remove the overflow and careful cut off the excess from the mark you have just made. Care should be taken not to cut the overflow at an angle. Remove burs.



**7:** Replace the overflow, and confirm measurement. Check no debris is blocking any of the restrictor flow holes and install the inspection chamber.

